

À des fins de recherche uniquement

Anticorps Polyclonal de lapin anti-PTP4A1/PRL1



Numéro de catalogue: 11508-1-AP

Phare

6 Publications

Informations de base

Numéro de catalogue:

11508-1-AP

Taille:

150ul, Concentration: 300 µg/ml by Nanodrop and 233 µg/ml by Bradford method using BSA as the standard;

Hôte:

Lapin

Isotype:

IgG

Immunogen Catalog Number:

AG2067

Numéro d'acquisition GenBank:

BC023975

Identification du gène (NCBI):

7803

Nom complet:

protein tyrosine phosphatase type IVA, member 1

MW calculé

20 kDa

MW observés:

18-20 kDa

Méthode de purification:

Purification par affinité contre l'antigène

Dilutions recommandées:

WB 1:500-1:1000

IHC 1:50-1:500

Applications

Applications testées:

IHC, WB, ELISA

Demandes citées:

IHC, WB

Spécificité de l'espèce:

Humain, souris

Espèces citées:

Humain, souris

Remarque-IHC: il est suggéré de démasquer l'antigène avec un tampon de TE buffer pH 9,0; (*) A défaut, 'le démasquage de l'antigène peut être 'effectué avec un tampon citrate pH 6,0.

Contrôles positifs:

WB : cellules HEK-293, cellules HeLa, cellules HepG2, cellules MCF-7

IHC : tissu de cancer du pancréas humain,

Informations générales

PTP4A1 (protein tyrosine phosphatase type IVA, member 1), also named as PRL1, HH72, PRL-1, PTP(CAAX1), PTPCAAX1, DKFZp779M0721, belongs to the protein-tyrosine phosphatase family, which play an important role in maintaining appropriate tyrosine phosphorylation levels in the cell during development and tissue regeneration (PMID:19341304). PTP4A1 is a PTPase and that it is highly expressed in growing hepatic cells and some tumor cell lines and is located primarily in the cell nucleus, and its overexpression modulates the growth of cells (PMID:8196618). PTP4A1 can exist as dimer, trimer and higher oligomers in vivo (PMID: 15571731, 18224294).

Publications notables

Autrice	Pubmed ID	Journal	Application
Chang Zhou	26722251	Oncol Lett	WB
Zhou Chang C	23696794	PLoS One	WB
Jessica Yun	35020952	Int J Cancer	WB, IHC

Stockage

Stockage:

Stocker à -20°C. Stable pendant un an après l'expédition.

Tampon de stockage:

PBS avec azoture de sodium à 0,02 % et glycérol à 50 % pH 7,3

L'aliquotage n'est pas nécessaire pour le stockage à -20C

*** Les 20ul contiennent 0,1% de BSA.

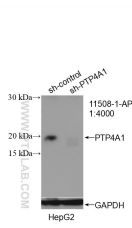
For technical support and original validation data for this product please contact:

T: 1 (888) 4PTGLAB (1-888-478-4522) (toll free in USA), or 1(312) 455-8498 (outside USA)

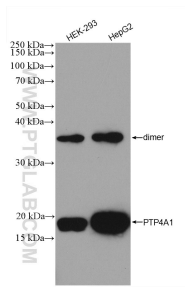
E: proteintech@ptglab.com
W: ptglab.com

This product is exclusively available under Proteintech Group brand and is not available to purchase from any other manufacturer.

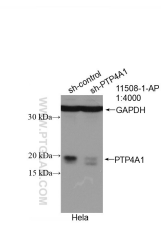
Données de validation sélectionnées



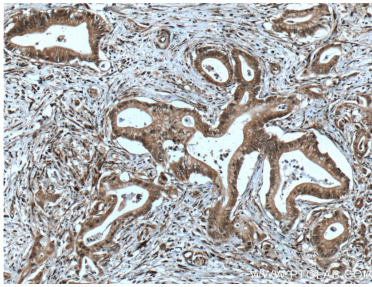
WB result of PTP4A1/PRL1 antibody (11508-1-AP; 1:4000; incubated at room temperature for 1.5 hours) with sh-Control and sh-PTP4A1/PRL1 transfected HepG2 cells.



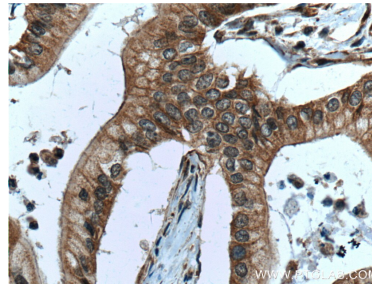
Various lysates were subjected to SDS PAGE followed by western blot with 11508-1-AP (PTP4A1/PRL1 antibody) at dilution of 1:600 incubated at room temperature for 1.5 hours.



WB result of PTP4A1/PRL1 antibody (11508-1-AP; 1:4000; incubated at room temperature for 1.5 hours) with sh-Control and sh-PTP4A1/PRL1 transfected HeLa cells.



Immunohistochemical analysis of paraffin-embedded human pancreas cancer tissue slide using 11508-1-AP (PTP4A1/PRL1 antibody) at dilution of 1:100 (under 10x lens). Heat mediated antigen retrieval with Tris-EDTA buffer (pH 9.0).



Immunohistochemical analysis of paraffin-embedded human pancreas cancer tissue slide using 11508-1-AP (PTP4A1/PRL1 antibody) at dilution of 1:100 (under 40x lens). Heat mediated antigen retrieval with Tris-EDTA buffer (pH 9.0).