

À des fins de recherche uniquement

Anticorps Polyclonal de lapin anti-YME1L1



Numéro de catalogue: 11510-1-AP

Phare

64 Publications

Informations de base

Numéro de catalogue:

11510-1-AP

Taille:

150ul, Concentration: 500 µg/ml by Nanodrop;

Hôte:

Lapin

Isotype:

IgG

Immunogen Catalog Number:

AG2069

Numéro d'acquisition GenBank:

BC023507

Identification du gène (NCBI):

10730

Nom complet:

YME1-like 1 (*S. cerevisiae*)

MW calculé

716 aa, 80 kDa

MW observés:

63 kDa

Méthode de purification:

Purification par affinité contre l'antigène

Dilutions recommandées:

WB 1:500-1:2000

IP 0.5-4.0 ug for IP and 1:500-1:1000 for WB

IF 1:10-1:100

Applications

Applications testées:

IF, IP, WB, ELISA

Demandes citées:

IF, IHC, IP, WB

Spécificité de l'espèce:

Humain, rat, souris

Espèces citées:

Humain, rat, singe, souris

Contrôles positifs:

WB : cellules COLO 320, cellules HeLa, cellules HepG2, cellules MCF-7

IP : cellules HeLa,

IF : cellules HepG2,

Informations générales

YME1L1(ATP-dependent zinc metalloprotease) is also named as FTSH1, YME1L, Meg-4, PAMP. YME1L1 plays a phylogenetically conserved role in mitochondrial protein metabolism. It also ensures cell proliferation, maintains normal cristae morphology and complex I respiration activity, promotes antiapoptotic activity and protects mitochondria from the accumulation of oxidatively damaged membrane proteins. YME1L1 can prevent mitochondrial DNA inserting into nuclear. It has 3 isoforms produced by alternative splicing with the molecular weight of 86 kDa, 80 kDa and 76 kDa. This protein can migrate with a molecular weight of about 55-63 kDa, which is the size of the mature YME1L1 protein(PMID:22252130; 22354088).

Publications notables

Autrice	Pubmed ID	Journal	Application
Olga Zurita Rendón	30061372	Mol Cell Biol	
Ana A Baburamani	26393574	Int J Mol Sci	WB
Barbara M Crisol	31494696	Eur J Nutr	WB

Stockage

Stockage:

Stocker à -20°C. Stable pendant un an après l'expédition.

Tampon de stockage:

PBS avec azoture de sodium à 0,02 % et glycérol à 50 % pH 7,3

L'aliquotage n'est pas nécessaire pour le stockage à -20C

*** Les 20ul contiennent 0,1% de BSA.

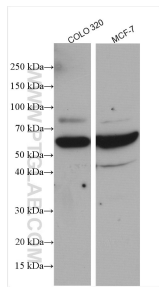
For technical support and original validation data for this product please contact:

T: 1 (888) 4PTGLAB (1-888-478-4522) (toll free in USA), or 1(312) 455-8498 (outside USA)

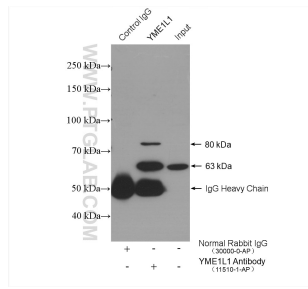
E: proteintech@ptglab.com
W: ptglab.com

This product is exclusively available under Proteintech Group brand and is not available to purchase from any other manufacturer.

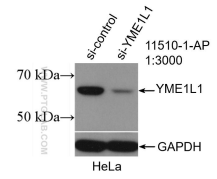
Données de validation sélectionnées



Various lysates were subjected to SDS PAGE followed by western blot with 11510-1-AP (YME1L1 antibody) at dilution of 1:1000 incubated at room temperature for 1.5 hours.



IP result of anti-YME1L1 (IP:11510-1-AP, 4ug; Detection:11510-1-AP 1:500) with HeLa cells lysate 1280 ug.



WB result of YME1L1 antibody (11510-1-AP; 1:3000; incubated at room temperature for 1.5 hours) with sh-Control and sh-YME1L1 transfected HeLa cells.



Immunofluorescent analysis of HepG2 cells using 11510-1-AP (YME1L1 antibody) at dilution of 1:25 and Rhodamine-Goat anti-Rabbit IgG.