

À des fins de recherche uniquement

Anticorps Polyclonal de lapin anti-TGIF2



Numéro de catalogue: 11522-1-AP

4 Publications

Informations de base

Numéro de catalogue: 11522-1-AP	Numéro d'acquisition GenBank: BC012816	Méthode de purification: Purification par affinité contre l'antigène
Taille: 150ul, Concentration: 900 µg/ml by Nanodrop;	Identification du gène (NCBI): 60436	Dilutions recommandées: WB 1:1000-1:8000 IHC 1:50-1:500 IF 1:50-1:500
Hôte: Lapin	Nom complet: TGFB-induced factor homeobox 2	
Isotype: IgG	MW calculé: 237 aa, 26 kDa	
Immunogen Catalog Number: AG2085	MW observés: 28 kDa and 30 kDa	

Applications

Applications testées:

IF, IHC, WB, ELISA

Demandes citées:

WB

Spécificité de l'espèce:

Humain, souris

Espèces citées:

Humain, souris

Contrôles positifs:

WB : cellules A431, cellules Daudi, cellules HL-60, cellules Jurkat

IHC : tissu testiculaire de souris,

IF : cellules Caco-2,

Remarque-IHC: il est suggéré de démasquer l'antigène avec un tampon de TE buffer pH 9,0; (*) À défaut, le démasquage de l'antigène peut être effectué avec un tampon citrate pH 6,0.

Informations générales

Transforming growth factor-beta-induced factor 2(TGIF2), is a member of a subfamily of transcription factor with a TALE(3-amino acid loop extension), an atypical homeodomain. It also contains a proline-rich region, which is a putative SH3 domain-binding site and suggested involve in transcriptional regulation. It is highly expressed in the heart, kidney, and testis, but low in the brain and prostate. Through binding directly to the 5'-CTGTCAA-3' DNA sequence or by interacting with TGF-beta activated SMAD proteins, TGIF2 acts as a transcriptional repressor. The calculated molecular weight of TGIF2 is 26 kDa, but the phosphorylated TGIF2 is about 30-35 kDa protein. This antibody detected two forms of bands of about 28 and 30 kDa, and the upper band appears to result from increased phosphorylation (PMID: 11427533).

Publications notables

Autrice	Pubmed ID	Journal	Application
Siguan Liu	29285082	Exp Ther Med	WB
Bum-Kyu Lee	26411691	Cell Rep	WB
Jing Lei	35592894	Brain Behav	WB

Stockage

Stockage:

Stocker à -20°C. Stable pendant un an après l'expédition.

Tampon de stockage:

PBS avec azoture de sodium à 0,02 % et glycérol à 50 % pH 7,3

L'aliquotage n'est pas nécessaire pour le stockage à -20C

*** Les 20ul contiennent 0,1% de BSA.

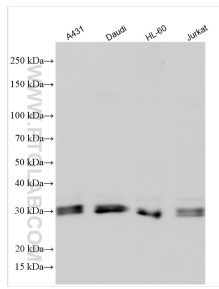
For technical support and original validation data for this product please contact:

T: 1 (888) 4PTGLAB (1-888-478-4522) (toll free in USA), or 1(312) 455-8498 (outside USA)

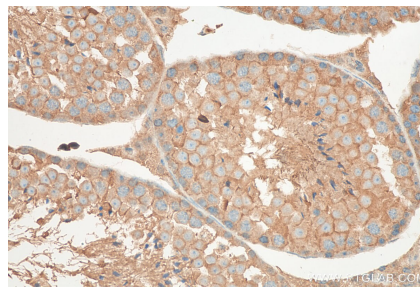
E: proteintech@ptglab.com
W: ptglab.com

This product is exclusively available under Proteintech Group brand and is not available to purchase from any other manufacturer.

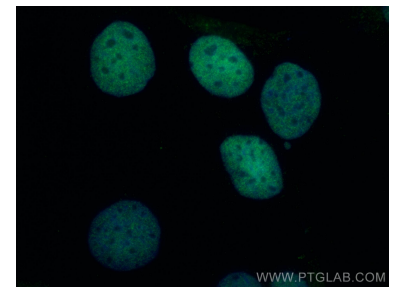
Données de validation sélectionnées



Various lysates were subjected to SDS PAGE followed by western blot with 11522-1-AP (TGIF2 antibody) at dilution of 1:4000 incubated at room temperature for 1.5 hours.



Immunohistochemical analysis of paraffin-embedded mouse testis tissue slide using 11522-1-AP (TGIF2 antibody) at dilution of 1:200 (under 40x lens). Heat mediated antigen retrieval with Tris-EDTA buffer (pH 9.0).



Immunofluorescent analysis of (4% PFA) fixed Caco-2 cells using TGIF2 antibody (11522-1-AP) at dilution of 1:200 and CoraLite®488-Conjugated AffiniPure Goat Anti-Rabbit IgG(H+L).