

À des fins de recherche uniquement

Anticorps Polyclonal de lapin anti-MAGED1



Numéro de catalogue: 11539-1-AP

1 Publications

Informations de base

Numéro de catalogue: 11539-1-AP	Numéro d'acquisition GenBank: BC014070	Méthode de purification: Purification par affinité contre l'antigène
Taille: 150ul , Concentration: 400 µg/ml by Nanodrop and 293 µg/ml by Bradford method using BSA as the standard;	Identification du gène (NCBI): 9500	Dilutions recommandées: WB 1:500-1:1000 IHC 1:20-1:200
Hôte: Lapin	Nom complet: melanoma antigen family D, 1	
Isotype: IgG	MW calculé 86 kDa; 92 kDa	
Immunogen Catalog Number: AG2109	MW observés: 66 kDa, 92-95 kDa	

Applications

Applications testées:

FC, IHC, WB, ELISA

Demandes citées:

IF, IHC, IP, WB

Spécificité de l'espèce:

Humain, rat, souris

Espèces citées:

rat

Remarque-IHC: il est suggéré de démasquer l'antigène avec un tampon de TE buffer pH 9,0; (*) A défaut, 'le démasquage de l'antigène peut être 'effectué avec un tampon citrate pH 6,0.

Contrôles positifs:

WB : cellules HEK-293, cellules HeLa, cellules HeLa apoptosées, tissu cérébral humain

IHC : tissu de gliome humain,

Informations générales

MAGED1 (also known as NRAGE or Dlxin-1) is a member of the type II melanoma antigen (MAGE) family of protein. MAGED1 can interact with the nerve growth factor receptor p75NTR, antagonize the association of p75NTR with TrkA, inhibit cell cycle progression, and facilitate p75NTR-mediated apoptosis (PMID: 10985348). It has been reported that MAGED1 binds Dlx5 and regulates its transcriptional function. In vivo, MAGED1 binds not only Dlx5 but also Dlx7 and Msx2 and forms homomultimers (PMID: 11084035). MAGED1 knockout mice show depressive behavior and impairments of circadian rhythm (PMID: 20300063; 23314527).

Publications notables

Autrice	Pubmed ID	Journal	Application
Meng Li	36585447	Sci Rep	WB, IHC, IF, IP

Stockage

Stockage:

Stocker à -20°C. Stable pendant un an après l'expédition.

Tampon de stockage:

PBS avec azoture de sodium à 0,02 % et glycérol à 50 % pH 7,3

L'aliquotage n'est pas nécessaire pour le stockage à -20C

*** Les 20ul contiennent 0,1% de BSA.

For technical support and original validation data for this product please contact:

T: 1 (888) 4PTGLAB (1-888-478-4522) (toll free in USA), or 1(312) 455-8498 (outside USA)

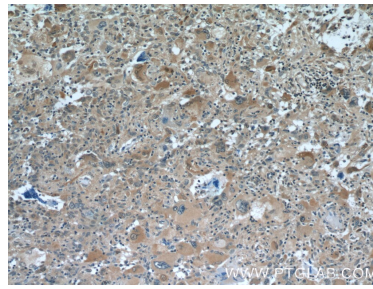
E: proteintech@ptglab.com
W: ptglab.com

This product is exclusively available under Proteintech Group brand and is not available to purchase from any other manufacturer.

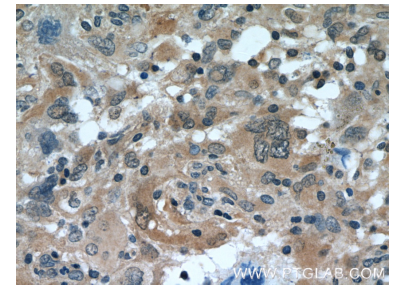
Données de validation sélectionnées



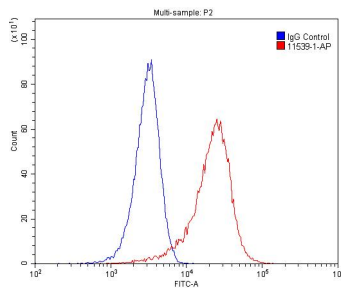
HEK-293 cells were subjected to SDS PAGE followed by western blot with 11539-1-AP (MAGED1 antibody) at dilution of 1:500 incubated at room temperature for 1.5 hours.



Immunohistochemical analysis of paraffin-embedded human gliomas tissue slide using 11539-1-AP (MAGED1 Antibody) at dilution of 1:100 (under 10x lens).



Immunohistochemical analysis of paraffin-embedded human gliomas tissue slide using 11539-1-AP (MAGED1 Antibody) at dilution of 1:100 (under 40x lens).



1X10⁶ HeLa cells were stained with 0.2ug MAGED1 antibody (11539-1-AP, red) and control antibody (blue). Cells were fixed with 4% PFA and permeabilized with 0.1% Triton X-100. Alexa Fluor 488-conjugated AffiniPure Goat Anti-Rabbit IgG(H+L) with dilution 1:1500.