

À des fins de recherche uniquement

# Anticorps Polyclonal de lapin anti-CAMKK2



Numéro de catalogue: 11549-1-AP

Phare

32 Publications

## Informations de base

Numéro de catalogue:  
11549-1-AP

Taille:  
150ul, Concentration: 650 µg/ml by Nanodrop and 300 µg/ml by Bradford method using BSA as the standard;

Hôte:  
Lapin

Isotype:  
IgG

Immunogen Catalog Number:  
AG2093

Numéro d'acquisition GenBank:  
BC026060

Identification du gène (NCBI):  
10645

Nom complet:  
calcium/calmodulin-dependent protein kinase kinase 2, beta

MW calculé  
588 aa, 60 kDa

MW observés:  
60-70 kDa

Méthode de purification:  
Purification par affinité contre l'antigène

Dilutions recommandées:  
WB 1:500-1:1000  
IP 0.5-4.0 ug for IP and 1:500-1:1000 for WB  
IHC 1:100-1:400  
IF 1:10-1:100

## Applications

Applications testées:  
IF, IHC, IP, WB, ELISA

Demandes citées:  
IF, IHC, WB

Spécificité de l'espèce:  
Humain, souris

Espèces citées:  
bovin, Humain, porc, rat, souris

**Remarque-IHC: il est suggéré de démasquer l'antigène avec un tampon de TE buffer pH 9,0; (\*) A défaut, 'le démasquage de l'antigène peut être 'effectué avec un tampon citrate pH 6,0.**

Contrôles positifs:

WB: cellules Jurkat, cellules HeLa, tissu cardiaque humain, tissu cérébral humain foetal

IP: cellules PC-3,

IHC: tissu de cancer de la prostate humain,

IF: cellules PC-3,

## Informations générales

CAMKK2(calcium/calmodulin-dependent protein kinase kinase 2) is also named as CAMKKB, KIAA0787 and belongs to the protein kinase superfamily. It regulates hypothalamic production of the orexigenic hormone NPY and contributes to the regulation of energy balance. CAMKK2 in vivo reduces tumor growth suggests that reactivation of CAMKK2 by development of new drugs may be a new strategy to prolong the period to respond androgen-deprivation therapy(ADT)(PMID:22549914). It can be autophosphorylated(PMID:19369195). It has 7 isoforms produced by alternative splicing.

## Publications notables

Autrice	Pubmed ID	Journal	Application
Yingying Zheng	34738030	Anim Nutr	WB
Mengqiu Yuan	34472622	EMBO J	WB
Siqi Ma	36341814	J Ethnopharmacol	WB,IF

## Stockage

Stockage:

Stocker à -20°C. Stable pendant un an après l'expédition.

Tampon de stockage:

PBS avec azoture de sodium à 0,02 % et glycérol à 50 % pH 7,3

L'aliquotage n'est pas nécessaire pour le stockage à -20C

\*\*\* Les 20ul contiennent 0,1% de BSA.

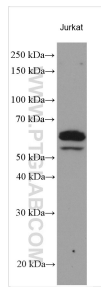
For technical support and original validation data for this product please contact:

T: 1 (888) 4PTGLAB (1-888-478-4522) (toll free in USA), or 1(312) 455-8498 (outside USA)

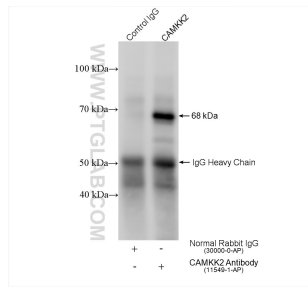
E: proteintech@ptglab.com  
W: ptglab.com

This product is exclusively available under Proteintech Group brand and is not available to purchase from any other manufacturer.

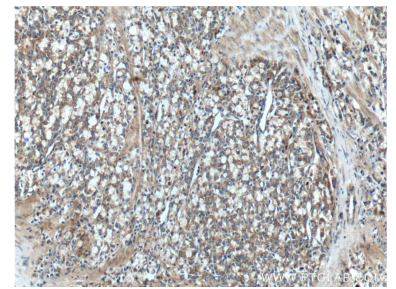
## Données de validation sélectionnées



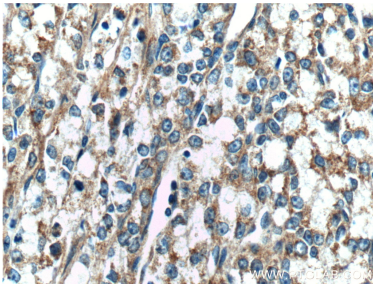
Various lysates were subjected to SDS PAGE followed by western blot with 11549-1-AP (CAMKK2 antibody) at dilution of 1:800 incubated at room temperature for 1.5 hours.



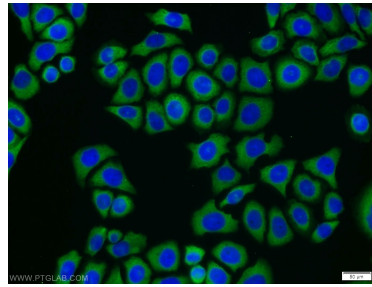
IP result of anti-CAMKK2(IP:11549-1-AP, 4ug; Detection:11549-1-AP 1:500) with PC-3 cells lysate 1760 ug.



Immunohistochemical analysis of paraffin-embedded human prostate cancer tissue slide using 11549-1-AP (CAMKK2 Antibody) at dilution of 1:200 (under 10x lens).



Immunohistochemical analysis of paraffin-embedded human prostate cancer tissue slide using 11549-1-AP (CAMKK2 Antibody) at dilution of 1:200 (under 40x lens).



Immunofluorescent analysis of PC-3 cells using 11549-1-AP (CAMKK2 antibody) at dilution of 1:25 and Alexa Fluor 488-conjugated AffiniPure Goat Anti-Rabbit IgG(H+L).