

À des fins de recherche uniquement

Anticorps Polyclonal de lapin anti-MEIS2



Numéro de catalogue: 11550-1-AP

1 Publications

Informations de base

Numéro de catalogue:

11550-1-AP

Taille:

150ul, Concentration: 300 µg/ml by Nanodrop and 267 µg/ml by Bradford method using BSA as the standard;

Hôte:

Lapin

Isotype:

IgG

Immunogen Catalog Number:

AG2096

Numéro d'acquisition GenBank:

BC001516

Identification du gène (NCBI):

4212

Nom complet:

Meis homeobox 2

MW calculé

381 aa, 42 kDa

MW observés:

56 kDa

Méthode de purification:

Purification par affinité contre l'antigène

Dilutions recommandées:

WB 1:1000-1:4000

IHC 1:400-1:1600

Applications

Applications testées:

IHC, WB, ELISA

Demandes citées:

IHC

Spécificité de l'espèce:

Humain, rat, souris

Espèces citées:

souris

Remarque-IHC: il est suggéré de démasquer l'antigène avec un tampon de TE buffer pH 9,0; (*) A défaut, 'le démasquage de l'antigène peut être 'effectué avec un tampon citrate pH 6,0.

Contrôles positifs:

WB : cellules Jurkat, cellules A549, cellules HCT 116, cellules LNCaP, cellules PC-3

IHC : tissu de cancer de la prostate humain,

Informations générales

MEIS2, also named as Meis1-related protein 1 or MRG1, is a 477 amino acid protein, which contains one homeobox DNA-binding domain and belongs to the TALE/MEIS homeobox family. MEIS2 is expressed in various tissues and at high level in the lymphoid organs of hematopoietic tissues. MEIS2 localizes in the nucleus and is involved in transcriptional regulation. MEIS2 is a critical downstream effector within an essential homeoprotein network that serving a rate-limiting regulatory role in MLL leukemogenesis. MEIS2 as midbrain specific marker is upregulated concomitantly with the morphological transformation of hindbrain to midbrain.

Publications notables

Autrice	Pubmed ID	Journal	Application
Russell Meaghan K MK	22315423	Proc Natl Acad Sci U S A	IHC

Stockage

Stockage:

Stocker à -20°C. Stable pendant un an après l'expédition.

Tampon de stockage:

PBS avec azoture de sodium à 0,02 % et glycérol à 50 % pH 7,3

L'aliquotage n'est pas nécessaire pour le stockage à -20C

*** Les 20ul contiennent 0,1% de BSA.

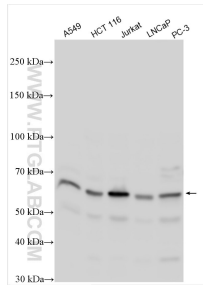
For technical support and original validation data for this product please contact:

T: 1 (888) 4PTGLAB (1-888-478-4522) (toll free in USA), or 1(312) 455-8498 (outside USA)

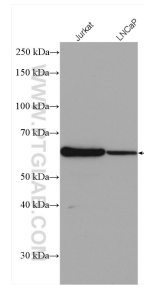
E: proteintech@ptglab.com
W: ptglab.com

This product is exclusively available under Proteintech Group brand and is not available to purchase from any other manufacturer.

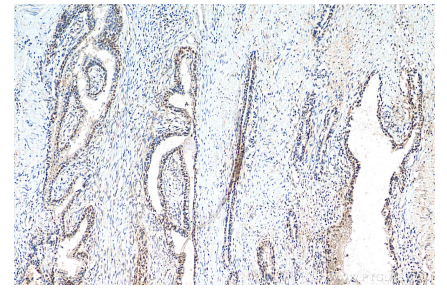
Données de validation sélectionnées



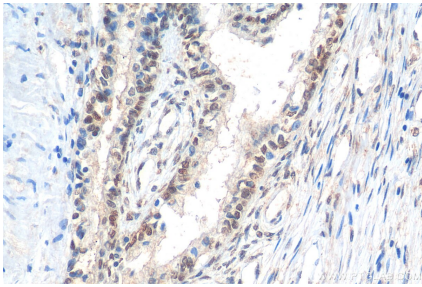
Various lysates were subjected to SDS PAGE followed by western blot with 11550-1-AP (MEIS2 antibody) at dilution of 1:1000 incubated at room temperature for 1.5 hours.



Various lysates were subjected to SDS PAGE followed by western blot with 11550-1-AP (MEIS2 antibody) at dilution of 1:2000 incubated at room temperature for 1.5 hours.



Immunohistochemical analysis of paraffin-embedded human prostate cancer tissue slide using 11550-1-AP (MEIS2 antibody) at dilution of 1:800 (under 10x lens). Heat mediated antigen retrieval with Tris-EDTA buffer (pH 9.0).



Immunohistochemical analysis of paraffin-embedded human prostate cancer tissue slide using 11550-1-AP (MEIS2 antibody) at dilution of 1:800 (under 40x lens). Heat mediated antigen retrieval with Tris-EDTA buffer (pH 9.0).