

À des fins de recherche uniquement

Anticorps Polyclonal de lapin anti-Cyclin E1



Numéro de catalogue: 11554-1-AP

Phare

246 Publications

Informations de base

Numéro de catalogue: 11554-1-AP	Numéro d'acquisition GenBank: BC035498	Méthode de purification: Purification par affinité contre l'antigène
Taille: 150ul, Concentration: 450 µg/ml by Nanodrop;	Identification du gène (NCBI): 898	Dilutions recommandées: WB 1:500-1:2000 IHC 1:400-1:1600
Hôte: Lapin	Nom complet: cyclin E1	
Isotype: IgG	MW calculé: 410 aa, 47 kDa	
Immunogen Catalog Number: AG2110	MW observés: 47 kDa	

Applications

Applications testées:

FC, IHC, WB, ELISA

Demandes citées:

CoIP, IF, IHC, WB

Spécificité de l'espèce:

Humain, souris

Espèces citées:

Humain, poisson-zèbre, porc, rat, souris

Remarque-IHC: il est suggéré de démasquer l'antigène avec un tampon de TE buffer pH 9,0; (*) À défaut, le démasquage de l'antigène peut être effectué avec un tampon citrate pH 6,0.

Contrôles positifs:

WB : cellules HT-29, cellules HeLa, cellules HepG2, cellules Jurkat, cellules K-562, cellules MCF-7, cellules NIH/3T3, tissu cardiaque de souris, tissu placentaire humain, tissu pulmonaire humain

IHC : tissu testiculaire de souris, tissu placentaire humain

Informations générales

Cyclin E1 (CCNE1) is a member of the highly conserved cyclin family, whose members are characterized by a dramatic periodicity in protein abundance through the cell cycle. CCNE1, an essential cyclin activating Cdk2, regulates the G1-S phase transition of the mammalian cell division cycle. Its timing expression plays a direct role in the initiation of DNA replication, the control of histone biosynthesis, and the centrosome cycle. CCNE1 is associated with disease progression in various malignancies and is associated clinically with poor prognosis. Two bands of Cyclin E1 were expressed in U2OS and MDA-MB-231 cells (PMID:9858585, PMID: 24112607).

Publications notables

Autrice	Pubmed ID	Journal	Application
Yong Zhu	34660260	Front Oncol	WB
Yong-Li Zhang	34679694	Antioxidants (Basel)	WB
Hao Yang	27708221	Oncotarget	WB

Stockage

Stockage:

Stocker à -20°C. Stable pendant un an après l'expédition.

Tampon de stockage:

PBS avec azoture de sodium à 0,02 % et glycérol à 50 % pH 7,3

L'aliquotage n'est pas nécessaire pour le stockage à -20C

*** Les 20ul contiennent 0,1% de BSA.

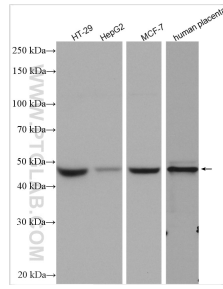
For technical support and original validation data for this product please contact:

T: 1 (888) 4PTGLAB (1-888-478-4522) (toll free in USA), or 1(312) 455-8498 (outside USA)

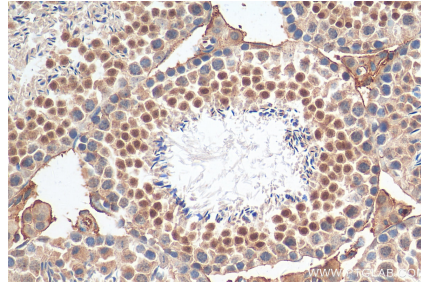
E: proteintech@ptglab.com
W: ptglab.com

This product is exclusively available under Proteintech Group brand and is not available to purchase from any other manufacturer.

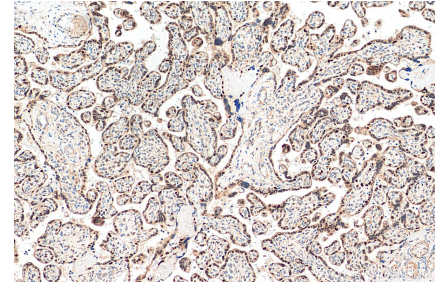
Données de validation sélectionnées



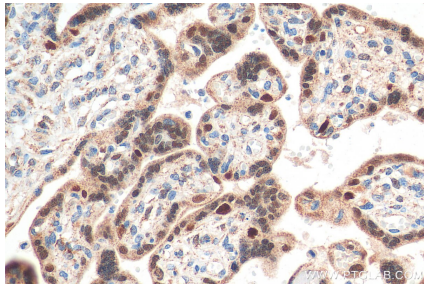
Various lysates were subjected to SDS PAGE followed by western blot with 11554-1-AP (Cyclin E1 antibody) at dilution of 1:1000 incubated at room temperature for 1.5 hours.



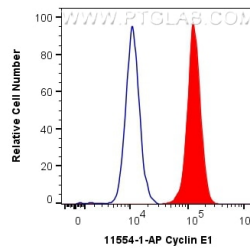
Immunohistochemical analysis of paraffin-embedded mouse testis tissue slide using 11554-1-AP (Cyclin E1 antibody) at dilution of 1:800 (under 40x lens). Heat mediated antigen retrieval with Tris-EDTA buffer (pH 9.0).



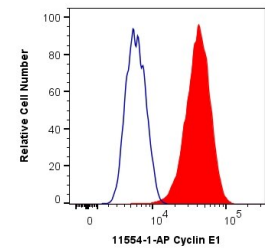
Immunohistochemical analysis of paraffin-embedded human placenta tissue slide using 11554-1-AP (Cyclin E1 antibody) at dilution of 1:800 (under 10x lens). Heat mediated antigen retrieval with Tris-EDTA buffer (pH 9.0).



Immunohistochemical analysis of paraffin-embedded human placenta tissue slide using 11554-1-AP (Cyclin E1 antibody) at dilution of 1:800 (under 40x lens). Heat mediated antigen retrieval with Tris-EDTA buffer (pH 9.0).



1×10^6 MCF-7 cells were intracellularly stained with 0.4 ug Anti-Human Cyclin E1 (11554-1-AP) and CoraLite®488-Conjugated AffiniPure Goat Anti-Rabbit IgG(H+L) at dilution 1:1000 (red), or 0.4 ug Control Antibody. Cells were fixed and permeabilized with Transcription Factor Staining Buffer Kit (PF00011).



1×10^6 HeLa cells were intracellularly stained with 0.4 ug Anti-Human Cyclin E1 (11554-1-AP) and CoraLite®488-Conjugated AffiniPure Goat Anti-Rabbit IgG(H+L) at dilution 1:1000 (red), or 0.4 ug Isotype Control. Cells were fixed and permeabilized with Transcription Factor Staining Buffer Kit (PF00011).