

À des fins de recherche uniquement

Anticorps Polyclonal de lapin anti-ING2



Numéro de catalogue: 11560-1-AP

Phare

11 Publications

Informations de base

Numéro de catalogue:
11560-1-AP

Taille:
150ul, Concentration: 300 µg/ml by Nanodrop and 233 µg/ml by Bradford method using BSA as the standard;

Hôte:
Lapin

Isotype:
IgG

Immunogen Catalog Number:
AG2121

Numéro d'acquisition GenBank:
BC030128

Identification du gène (NCBI):
3622
Nom complet:
inhibitor of growth family, member 2

MW calculé:
280 aa, 33 kDa

MW observés:
33 kDa

Méthode de purification:
Purification par affinité contre l'antigène

Dilutions recommandées:
WB 1:500-1:1000
IP 0.5-4.0 ug for IP and 1:500-1:1000 for WB
IHC 1:20-1:200
IF 1:50-1:500

Applications

Applications testées:
IF, IHC, IP, WB, ELISA

Demandes citées:
IF, IHC, IP, WB

Spécificité de l'espèce:
Humain, rat, souris

Espèces citées:
Humain, souris

Remarque-IHC: il est suggéré de démasquer l'antigène avec un tampon de TE buffer pH 9,0; (*) A défaut, 'le démasquage de l'antigène peut être 'effectué avec un tampon citrate pH 6,0.

Contrôles positifs:

WB : cellules HEK-293, tissu hépatique humain

IP : cellules HEK-293,

IHC : tissu de cancer du côlon humain, tissu de cancer du col de l'utérus humain

IF : cellules HEK-293,

Informations générales

ING2, also named as ING1L, belongs to the ING family and contains a PHD-type zinc finger. It is induced by the DNA-damaging agent neocarzinostatin. As a candidate tumor suppressor, ING2 seems to be involved in p53/TP53 activation and p53/TP53-dependent apoptotic pathways, probably by enhancing acetylation of p53/TP53. It is a component of a mSin3A-like corepressor complex, which is probably involved in deacetylation of nucleosomal histones. Recent finding reported that ING2 regulates muscle differentiation by regulating chromatin remodeling program. Catalog# 11560-1-AP is a rabbit polyclonal antibody raised against full length ING2 of human origin.

Publications notables

Autrice	Pubmed ID	Journal	Application
Xue-Feng Yang	30655738	Oncol Lett	IHC
Jianji Chen	33969871	Biochem J	IP
Zhang Hua-kun HK	18160212	Cancer Lett	IHC

Stockage

Stockage:

Stocker à -20°C. Stable pendant un an après l'expédition.

Tampon de stockage:

PBS avec azoture de sodium à 0,02 % et glycérol à 50 % pH 7,3

L'aliquotage n'est pas nécessaire pour le stockage à -20C

*** Les 20ul contiennent 0,1% de BSA.

For technical support and original validation data for this product please contact:

T: 1 (888) 4PTGLAB (1-888-478-4522) (toll free in USA), or 1(312) 455-8498 (outside USA)

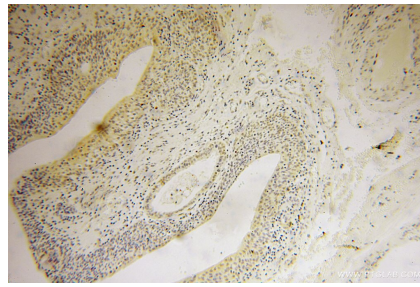
E: proteintech@ptglab.com
W: ptglab.com

This product is exclusively available under Proteintech Group brand and is not available to purchase from any other manufacturer.

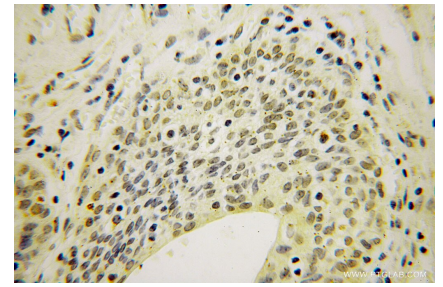
Données de validation sélectionnées



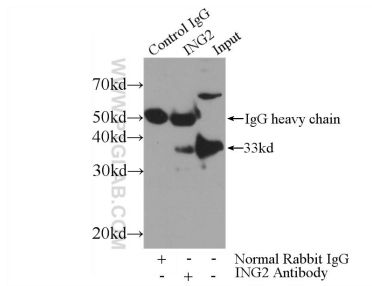
HEK-293 cells were subjected to SDS PAGE followed by western blot with 11560-1-AP (ING2 antibody) at dilution of 1:400 incubated at room temperature for 1.5 hours.



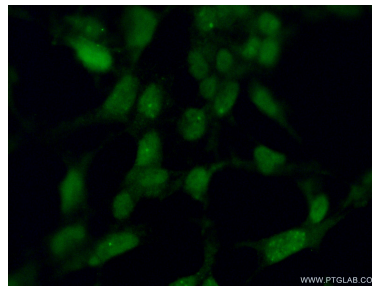
Immunohistochemical analysis of paraffin-embedded human colon cancer using 11560-1-AP (ING2 antibody) at dilution of 1:50 (under 10x lens).



Immunohistochemical analysis of paraffin-embedded human colon cancer using 11560-1-AP (ING2 antibody) at dilution of 1:50 (under 40x lens).



IP Result of anti-ING2 (IP:11560-1-AP, 3ug; Detection:11560-1-AP 1:500) with HEK-293 cells lysate 1000ug.



Immunofluorescent analysis of (10% Formaldehyde) fixed HEK-293 cells using 11560-1-AP (ING2 antibody) at dilution of 1:50 and Alexa Fluor 488-conjugated AffiniPure Goat Anti-Rabbit IgG(H+L).