

À des fins de recherche uniquement

Anticorps Polyclonal de lapin anti-MED15



Numéro de catalogue: 11566-1-AP

Phare

16 Publications

Informations de base

Numéro de catalogue:
11566-1-AP

Taille:
150ul, Concentration: 750 µg/ml by Nanodrop and 400 µg/ml by Bradford method using BSA as the standard;

Hôte:
Lapin

Isotype:
IgG

Immunogen Catalog Number:
AG2143

Numéro d'acquisition GenBank:
BC017110

Identification du gène (NCBI):
51586

Nom complet:
mediator complex subunit 15

MW calculé:
788 aa, 87 kDa

MW observés:
105 kDa

Méthode de purification:
Purification par affinité contre l'antigène

Dilutions recommandées:
WB 1:500-1:2000
IP 0.5-4.0 ug for IP and 1:500-1:1000 for WB
IHC 1:20-1:200
IF 1:20-1:200

Applications

Applications testées:
IF, IHC, IP, WB, ELISA

Demandes citées:
ChIP, IF, IHC, WB

Spécificité de l'espèce:
Humain

Espèces citées:
Humain, souris

Remarque-IHC: il est suggéré de démasquer l'antigène avec un tampon de TE buffer pH 9,0; (*) A défaut, le démasquage de l'antigène peut être effectué avec un tampon citrate pH 6,0.

Contrôles positifs:

WB : cellules K-562, cellules SMMC-7721

IP : cellules K-562,

IHC : tissu de cancer de la prostate humain,

IF : cellules SH-SY5Y,

Informations générales

MED15, also named as TIG1, CAG7A, CTG7A, PCQAP, TIG-1, TNRC7 and ARC105, is a subunit of the multiprotein complexes PC2 and ARC/DRIP and may function as a transcriptional coactivator in RNA polymerase II transcription. It contains stretches of trinucleotide repeats and is located in the chromosome 22 region which is deleted in DiGeorge syndrome. MED15 is recruited to promoters by direct interaction with gene-specific regulatory proteins. It is about 105kd in SDS-page (doi.org/10.3109/10409238.2013.840259).

Publications notables

Autrice	Pubmed ID	Journal	Application
Takuya Nakatsubo	25382556	Drug Discov Ther	WB, IF
Masayuki Kumafuji	24840924	Genes Cells	ChIP
Cristina Batlle	33772081	Commun Biol	IF

Stockage

Stockage:

Stocker à -20°C. Stable pendant un an après l'expédition.

Tampon de stockage:

PBS avec azoture de sodium à 0,02 % et glycérol à 50 % pH 7,3

L'aliquotage n'est pas nécessaire pour le stockage à -20C

*** Les 20ul contiennent 0,1% de BSA.

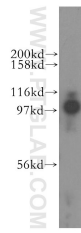
For technical support and original validation data for this product please contact:

T: 1 (888) 4PTGLAB (1-888-478-4522) (toll free in USA), or 1(312) 455-8498 (outside USA)

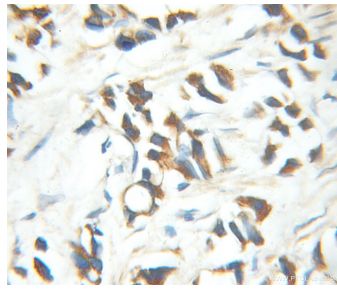
E: proteintech@ptglab.com
W: ptglab.com

This product is exclusively available under Proteintech Group brand and is not available to purchase from any other manufacturer.

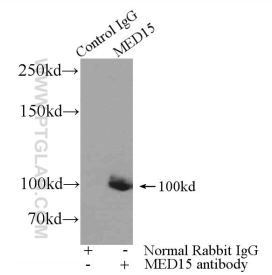
Données de validation sélectionnées



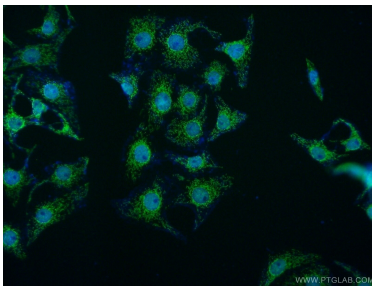
K-562 cells were subjected to SDS PAGE followed by western blot with 11566-1-AP (MED15 antibody) at dilution of 1:500 incubated at room temperature for 1.5 hours.



Immunohistochemical analysis of paraffin-embedded human prostate cancer using 11566-1-AP (MED15 antibody) at dilution of 1:100 (under 10x lens).



IP Result of anti-MED15 (IP:11566-1-AP, 3ug; Detection:11566-1-AP 1:500) with K-562 cells lysate 3440ug.



Immunofluorescent analysis of SH-SY5Y cells using 11566-1-AP (MED15 antibody) at dilution of 1:50 and Alexa Fluor 488-conjugated AffiniPure Goat Anti-Rabbit IgG(H+L).