

À des fins de recherche uniquement

Anticorps Polyclonal de lapin anti-PSMA6



Numéro de catalogue: 11573-1-AP

2 Publications

Informations de base

Numéro de catalogue:

11573-1-AP

Taille:

150ul, Concentration: 300 µg/ml by Nanodrop and 167 µg/ml by Bradford method using BSA as the standard;

Hôte:

Lapin

Isotype:

IgG

Immunogen Catalog Number:

AG2154

Numéro d'acquisition GenBank:

BC023659

Identification du gène (NCBI):

5687

Nom complet:

proteasome (prosome, macropain) subunit, alpha type, 6

MW calculé

246 aa, 27 kDa

MW observés:

27-29 kDa

Méthode de purification:

Purification par affinité contre l'antigène

Dilutions recommandées:

WB 1:500-1:3000

IP 0.5-4.0 ug for IP and 1:500-1:2000 for WB

IHC 1:50-1:500

IF 1:20-1:200

Applications

Applications testées:

FC, IF, IHC, IP, WB, ELISA

Demandes citées:

IF, WB

Spécificité de l'espèce:

Humain, rat, souris

Espèces citées:

Humain, oyster

Remarque-IHC: il est suggéré de démasquer l'antigène avec un tampon de TE buffer pH 9,0; (*) A défaut, 'le démasquage de l'antigène peut être 'effectué avec un tampon citrate pH 6,0.

Contrôles positifs:

WB : cellules A549, cellules HEK-293, cellules HepG2, cellules Jurkat, cellules MCF-7, cellules Neuro-2a

IP : cellules HEK-293,

IHC : tissu de cancer du poumon humain, tissu testiculaire humain

IF : cellules HeLa, cellules HepG2, cellules MCF-7

Informations générales

PSMA6 (Proteasome subunit alpha type-6) is also named as PROS27 and belongs to the peptidase T1A family. The proteasome is a multicatalytic proteinase complex which is characterized by its ability to cleave peptides with Arg, Phe, Tyr, Leu, and Glu adjacent to the leaving group at neutral or slightly basic pH. It also has an ATP-dependent proteolytic activity.

Publications notables

Autrice	Pubmed ID	Journal	Application
Xiaohong Huang	27880033	Proteomics	WB,IF
Qian-Wei Luo	36549896	Small	WB,IF

Stockage

Stockage:

Stocker à -20°C. Stable pendant un an après l'expédition.

Tampon de stockage:

PBS avec azoture de sodium à 0,02 % et glycérol à 50 % pH 7,3

L'aliquotage n'est pas nécessaire pour le stockage à -20C

*** Les 20ul contiennent 0,1% de BSA.

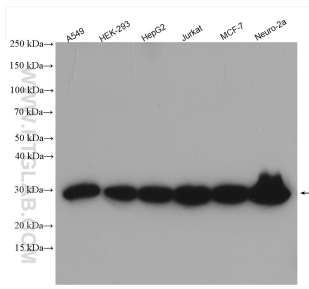
For technical support and original validation data for this product please contact:

T: 1 (888) 4PTGLAB (1-888-478-4522) (toll free in USA), or 1(312) 455-8498 (outside USA)

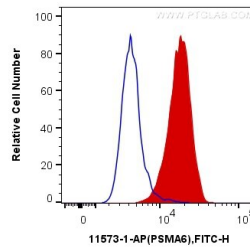
E: proteintech@ptglab.com
W: ptglab.com

This product is exclusively available under Proteintech Group brand and is not available to purchase from any other manufacturer.

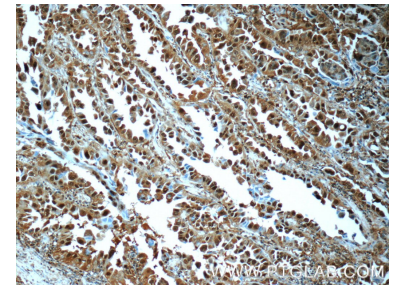
Données de validation sélectionnées



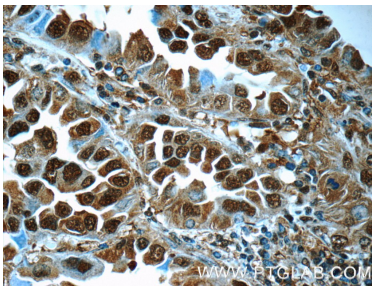
Various lysates were subjected to SDS PAGE followed by western blot with 11573-1-AP (PSMA6 antibody) at dilution of 1:1500 incubated at room temperature for 1.5 hours.



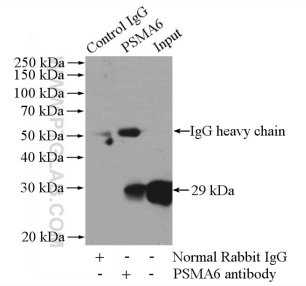
1×10^6 HepG2 cells were intracellularly stained with 0.2 μ g Anti-Human PSMA6 (11573-1-AP) and CoraLite®488-Conjugated AffiniPure Goat Anti-Rabbit IgG(H+L) at dilution 1:1000 (red), or 0.2 μ g Control Antibody. Cells were fixed with 4% PFA and permeabilized with Flow Cytometry Perm Buffer (PF00011-C).



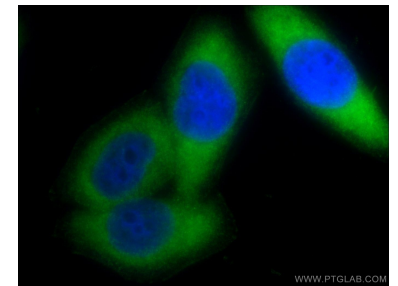
Immunohistochemical analysis of paraffin-embedded human lung cancer tissue slide using 11573-1-AP (PSMA6 Antibody) at dilution of 1:50 (under 10x lens).



Immunohistochemical analysis of paraffin-embedded human lung cancer tissue slide using 11573-1-AP (PSMA6 Antibody) at dilution of 1:50 (under 40x lens).



IP Result of anti-PSMA6 (IP:11573-1-AP, 4 μ g; Detection:11573-1-AP 1:1000) with HEK-293 cells lysate 3200 μ g.



Immunofluorescent analysis of HeLa cells using 11573-1-AP (PSMA6 antibody) at dilution of 1:50 and Alexa Fluor 488-conjugated AffiniPure Goat Anti-Rabbit IgG(H+L).