

À des fins de recherche uniquement

# Anticorps Polyclonal de lapin anti-RGS5



Numéro de catalogue: 11590-1-AP

12 Publications

## Informations de base

<b>Numéro de catalogue:</b> 11590-1-AP	<b>Numéro d'acquisition GenBank:</b> BC030059	<b>Méthode de purification:</b> Purification par affinité contre l'antigène
<b>Taille:</b> 150ul, Concentration: 1200 µg/ml by Nanodrop and 467 µg/ml by Bradford method using BSA as the standard;	<b>Identification du gène (NCBI):</b> 8490	<b>Dilutions recommandées:</b> WB 1:1000-1:5000 IHC 1:200-1:800 IF 1:200-1:800
<b>Hôte:</b> Lapin	<b>Nom complet:</b> regulator of G-protein signaling 5	
<b>Isotype:</b> IgG	<b>MW calculé:</b> 181 aa, 21 kDa	
<b>Immunogen Catalog Number:</b> AG2196	<b>MW observés:</b> 42 kDa	

## Applications

**Applications testées:**  
FC, IF, IHC, WB, ELISA

**Demandes citées:**  
IF, IHC, WB

**Spécificité de l'espèce:**  
Humain, rat, souris

**Espèces citées:**  
Humain, souris

**Remarque-IHC: il est suggéré de démasquer l'antigène avec un tampon de TE buffer pH 9,0; (\*) A défaut, le démasquage de l'antigène peut être effectué avec un tampon citrate pH 6,0.**

**Contrôles positifs:**

**WB:** tissu de muscle squelettique de souris, cellules MCF-7, tissu cardiaque de souris, tissu cardiaque humain, tissu de muscle squelettique de rat, tissu de muscle squelettique humain

**IHC:** tissu de cancer de l'estomac humain,

**IF:** cellules HeLa,

## Informations générales

RGS5 inhibits signal transduction by increasing the GTPase activity of G protein alpha subunits thereby driving them into their inactive GDP-bound form. It binds to G(i)-alpha and G(o)-alpha, but not to G(s)-alpha. The 42kd band recognized by this antibody is a RGS5-RGS5 dimer. (Pubmed:17762159)

## Publications notables

Autrice	Pubmed ID	Journal	Application
Andreas Enström	36111549	Biol Open	WB
Bo Hao	36270103	Transl Oncol	IF
Zhaohui Chen	33033240	Nat Commun	IF

## Stockage

**Stockage:**  
Stocker à -20°C. Stable pendant un an après l'expédition.

**Tampon de stockage:**  
PBS avec azoture de sodium à 0,02 % et glycérol à 50 % pH 7,3  
L'aliquotage n'est pas nécessaire pour le stockage à -20C

\*\*\* Les 20ul contiennent 0,1% de BSA.

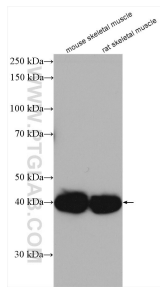
For technical support and original validation data for this product please contact:

T: 1 (888) 4PTGLAB (1-888-478-4522) (toll free in USA), or 1(312) 455-8498 (outside USA)

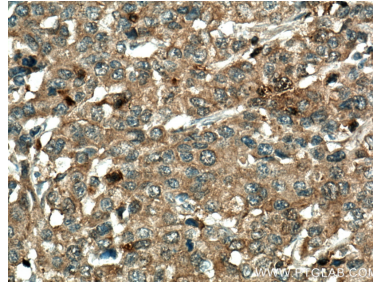
E: proteintech@ptglab.com  
W: ptglab.com

This product is exclusively available under Proteintech Group brand and is not available to purchase from any other manufacturer.

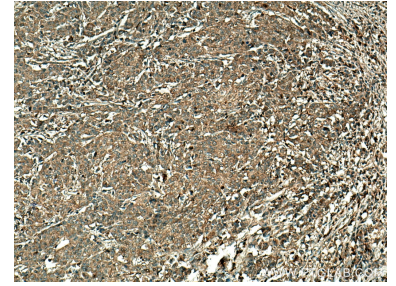
## Données de validation sélectionnées



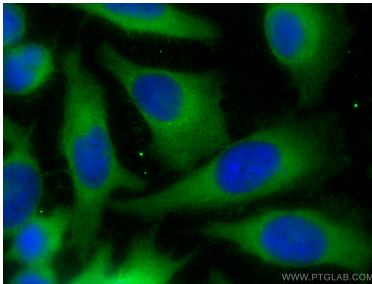
Various lysates were subjected to SDS PAGE followed by western blot with 11590-1-AP (RGS5 antibody) at dilution of 1:2500 incubated at room temperature for 1.5 hours.



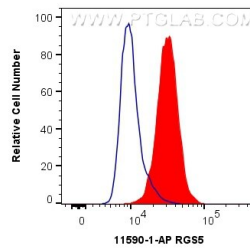
Immunohistochemical analysis of paraffin-embedded human stomach cancer tissue slide using 11590-1-AP (RGS5 antibody) at dilution of 1:400 (under 10x lens). Heat mediated antigen retrieval with Tris-EDTA buffer (pH 9.0).



Immunohistochemical analysis of paraffin-embedded human stomach cancer tissue slide using 11590-1-AP (RGS5 antibody) at dilution of 1:400 (under 10x lens). Heat mediated antigen retrieval with Tris-EDTA buffer (pH 9.0).



Immunofluorescent analysis of (-20°C Methanol) fixed HeLa cells using RGS5 antibody (11590-1-AP) at dilution of 1:400 and CoraLite@488-Conjugated AffiniPure Goat Anti-Rabbit IgG(H+L).



1X10<sup>6</sup> HeLa cells were intracellularly stained with 0.4 ug Anti-Human RGS5 (11590-1-AP) and CoraLite@488-Conjugated AffiniPure Goat Anti-Rabbit IgG(H+L) at dilution 1:1000 (red), or 0.4 ug Control Antibody. Cells were fixed with 4% PFA and permeabilized with Flow Cytometry Perm Buffer (PF00011-C).