

À des fins de recherche uniquement

# Anticorps Polyclonal de lapin anti-NUAK2



Numéro de catalogue: 11592-1-AP

Phare

4 Publications

## Informations de base

Numéro de catalogue:

11592-1-AP

Taille:

150ul, Concentration: 267 µg/ml by Bradford method using BSA as the standard;

Hôte:

Lapin

Isotype:

IgG

Immunogen Catalog Number:

AG2031

Numéro d'acquisition GenBank:

BC017306

Identification du gène (NCBI):

81788

Nom complet:

NUAK family, SNF1-like kinase, 2

MW calculé

628 aa, 70 kDa

MW observés:

70 kDa

Méthode de purification:

Purification par affinité contre l'antigène

Dilutions recommandées:

WB 1:500-1:1000

IHC 1:20-1:200

IF 1:20-1:200

## Applications

Applications testées:

IF, IHC, WB, ELISA

Demandes citées:

IF, IHC, WB

Spécificité de l'espèce:

Humain, rat, souris

Espèces citées:

Humain

**Remarque-IHC: il est suggéré de démasquer l'antigène avec un tampon de TE buffer pH 9,0; (\*) A défaut, 'le démasquage de l'antigène peut être 'effectué avec un tampon citrate pH 6,0.**

Contrôles positifs:

WB : cellules Y79, cellules HeLa

IHC : tissu rénal humain, tissu de carcinome à cellules rénales humain

IF : cellules NIH3T3,

## Informations générales

NUAK2(NUAK family SNF1-like kinase 2) is also named as OMPHK2, SNARK and belongs to the SNF1 subfamily. The function of NUAK2 is partly dependent on anti-apoptotic properties against apoptosis induced by death ligand and NUAK2 also has effects on the migration of cancer cells as speculated from studies on myosin filaments and cytoskeleton organization in normal cells(PMID:21911917). Western blot analysis detected NUAK2 expressed in cancer cell lines of diverse tissue origin(PMID:12409306).

## Publications notables

Autrice	Pubmed ID	Journal	Application
Doaa Hussein Zineldeen	25732129	Ann Clin Biochem	WB, IF
Takeshi Namiki	25832654	Cancer Res	WB, IF
Namiki Takeshi T	21460252	Proc Natl Acad Sci U S A	WB,IHC

## Stockage

Stockage:

Stocker à -20°C. Stable pendant un an après l'expédition.

Tampon de stockage:

PBS avec azoture de sodium à 0,02 % et glycérol à 50 % pH 7,3

L'aliquotage n'est pas nécessaire pour le stockage à -20C

\*\*\* Les 20ul contiennent 0,1% de BSA.

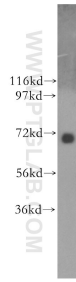
For technical support and original validation data for this product please contact:

T: 1 (888) 4PTGLAB (1-888-478-4522) (toll free in USA), or 1(312) 455-8498 (outside USA)

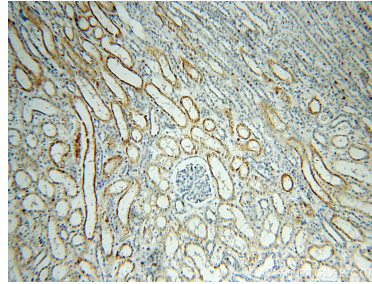
E: proteintech@ptglab.com  
W: ptglab.com

This product is exclusively available under Proteintech Group brand and is not available to purchase from any other manufacturer.

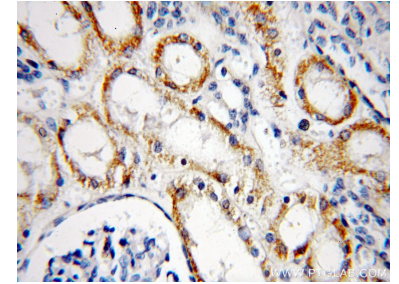
## Données de validation sélectionnées



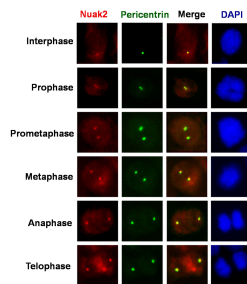
Y79 cells were subjected to SDS PAGE followed by western blot with 11592-1-AP (NUAK2 antibody) at dilution of 1:400 incubated at room temperature for 1.5 hours.



Immunohistochemical analysis of paraffin-embedded human kidney using 11592-1-AP (NUAK2 antibody) at dilution of 1:50 (under 10x lens).



Immunohistochemical analysis of paraffin-embedded human kidney using 11592-1-AP (NUAK2 antibody) at dilution of 1:50 (under 40x lens).



NIH3T3 cells on cover slips fixed and staining with anti-NUAK2 (11592-1-AP, 1:100; Rabbit polyclonal - Red) and anti-pericentrin (centrosome Marker; McAb-Green). The photo shows the centrosome in cell cycle: Interphase, Prophase, Prometaphase, Metaphase, Anaphase and Telophase. DAPI was used to stain the cell nuclei (blue) at a concentration of 1ug/ml. (from Dr. Zineldeen Doaa Hussein).