

À des fins de recherche uniquement

Anticorps Polyclonal de lapin anti-IFI30



Numéro de catalogue: 11597-1-AP

Phare

2 Publications

Informations de base

Numéro de catalogue:
11597-1-AP

Taille:
150ul , Concentration: 450 µg/ml by Nanodrop and 300 µg/ml by Bradford method using BSA as the standard;

Hôte:
Lapin

Isotype:
IgG

Immunogen Catalog Number:
AG2178

Numéro d'acquisition GenBank:
BC021136

Identification du gène (NCBI):
10437

Nom complet:
interferon, gamma-inducible protein 30

MW calculé
261 aa, 29 kDa

MW observés:
29 kDa

Méthode de purification:
Purification par affinité contre l'antigène

Dilutions recommandées:
WB 1:500-1:2000
IP 0.5-4.0 ug for IP and 1:1000-1:6000 for WB
IF 1:50-1:500

Applications

Applications testées:
IF, IP, WB, ELISA

Demandes citées:
IHC, WB

Spécificité de l'espèce:
Humain

Espèces citées:
Humain

Contrôles positifs:

WB : tissu de côlon humain, cellules COLO 320

IP : cellules COLO 320,

IF : cellules HeLa,

Informations générales

IFI30(interferon, gamma-inducible protein 30) is also named as IP30, GILT, IFI-30, MGC32056, IFI30 and belongs to the GILT family. It can facilitate the processing and presentation to antigen-specific T cells of protein antigens containing disulfide bonds. IFI30 is inducibly up-regulated by IFN-g, as are MHC class II molecules, the associated invariant chain, and HLA-DM, which catalyses peptide loading in MHCs and the 35 kDa species is the IFI30 proform, and the 30-kDa species is the mature form(PMID:10639150). It can exist as a dimer(PMID:17142755).

Publications notables

Autrice	Pubmed ID	Journal	Application
Yan Fan	34400904	Int J Med Sci	WB,IHC
Menglin Chen	37270969	Phytomedicine	WB

Stockage

Stockage:

Stocker à -20°C. Stable pendant un an après l'expédition.

Tampon de stockage:

PBS avec azoture de sodium à 0,02 % et glycérol à 50 % pH 7,3

L'aliquotage n'est pas nécessaire pour le stockage à -20C

*** Les 20ul contiennent 0,1% de BSA.

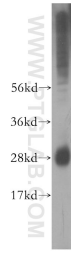
For technical support and original validation data for this product please contact:

T: 1 (888) 4PTGLAB (1-888-478-4522) (toll free in USA), or 1(312) 455-8498 (outside USA)

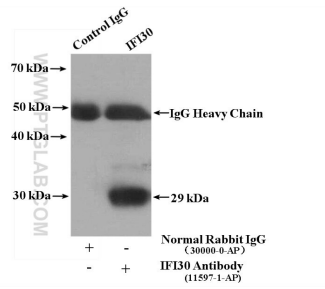
E: proteintech@ptglab.com
W: ptglab.com

This product is exclusively available under Proteintech Group brand and is not available to purchase from any other manufacturer.

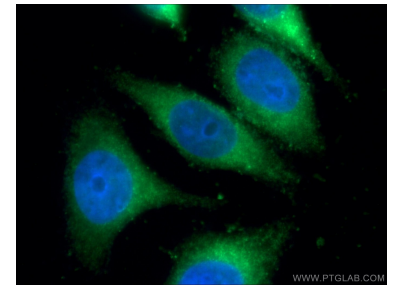
Données de validation sélectionnées



human colon tissue were subjected to SDS PAGE followed by western blot with 11597-1-AP (IFI30 antibody) at dilution of 1:400 incubated at room temperature for 1.5 hours.



IP result of anti-IFI30 (IP:11597-1-AP, 4ug; Detection:11597-1-AP 1:3000) with COLO 320 cells lysate 2400 ug.



Immunofluorescent analysis of (-20°C Ethanol) fixed HeLa cells using 11597-1-AP (IFI30 antibody) at dilution of 1:100 and Alexa Fluor 488-conjugated AffiniPure Goat Anti-Rabbit IgG(H+L).