

À des fins de recherche uniquement

Anticorps Polyclonal de lapin anti-IGF2BP2



Numéro de catalogue: 11601-1-AP

Phare

88 Publications

Informations de base

Numéro de catalogue:
11601-1-AP

Taille:
150ul, Concentration: 600 µg/ml by
Nanodrop;

Hôte:
Lapin

Isotype:
IgG

Immunogen Catalog Number:
AG2142

Numéro d'acquisition GenBank:
BC021290

Identification du gène (NCBI):
10644

Nom complet:
insulin-like growth factor 2 mRNA
binding protein 2

MW calculé
594 aa, 65 kDa

MW observés:
55-65 kDa

Méthode de purification:
Purification par affinité contre
l'antigène

Dilutions recommandées:
WB 1:2000-1:16000
IP 0.5-4.0 µg for IP and 1:500-1:1000
for WB
IHC 1:50-1:500

Applications

Applications testées:
IHC, IP, WB, ELISA

Demandes citées:
CoIP, IF, IHC, IP, RIP, WB

Spécificité de l'espèce:
Humain, rat, souris

Espèces citées:
Humain, rat, souris

Remarque-IHC: il est suggéré de démasquer l'antigène avec un tampon de TE buffer pH 9,0; (*) À défaut, le démasquage de l'antigène peut être effectué avec un tampon citrate pH 6,0.

Contrôles positifs:

WB : cellules HeLa, cellules COLO 320, cellules HepG2, tissu cardiaque humain, tissu rénal de rat, tissu rénal de souris, tissu rénal humain

IP : cellules HEK-293,

IHC : tissu de cancer du pancréas humain, tissu de cancer du côlon humain, tissu de cancer du sein humain, tissu d'estomac de souris

Informations générales

Insulin-like growth factor 2 mRNA-binding protein 2 (IGF2BP2), is a member of a family of mRNA binding protein, which can bind to several mammalian cells' mRNAs. Thus it may involve in the regulation of translation of mRNA. IGF2BP2's polymorphisms is risk factor for developing type 2 diabetes. This antibody raise against part of N-terminus of human IGF2BP2. IGF2BP2 has some isoforms with the MW of 54-66 kDa. Some literature has reported that multiple bands can be detected (PMID: 22427968, 36322753, 23069990).

Publications notables

Autrice	Pubmed ID	Journal	Application
Kusuma Suphakhong	36183833	J Biol Chem	WB
Yibo Bian	36230970	Cells	WB,IHC,IF,RIP
Miao Li	30247605	J Clin Endocrinol Metab	RIP

Stockage

Stockage:

Stocker à -20°C. Stable pendant un an après l'expédition.

Tampon de stockage:

PBS avec azoture de sodium à 0,02 % et glycérol à 50 % pH 7,3

L'aliquotage n'est pas nécessaire pour le stockage à -20C

*** Les 20ul contiennent 0,1% de BSA.

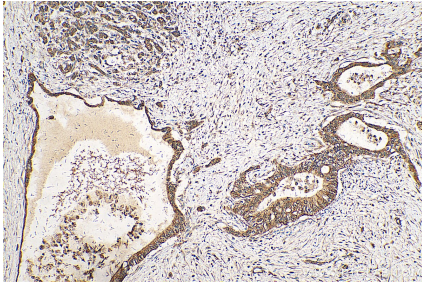
For technical support and original validation data for this product please contact:

T: 1 (888) 4PTGLAB (1-888-478-4522) (toll free in USA), or 1(312) 455-8498 (outside USA)

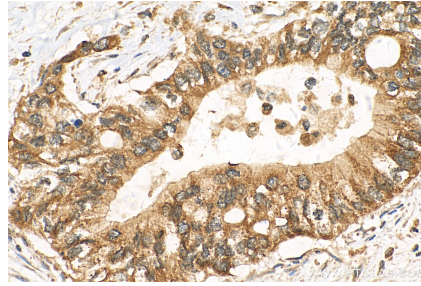
E: proteintech@ptglab.com
W: ptglab.com

This product is exclusively available under Proteintech Group brand and is not available to purchase from any other manufacturer.

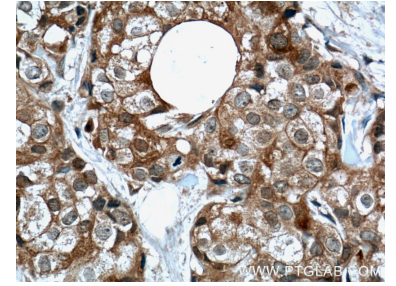
Données de validation sélectionnées



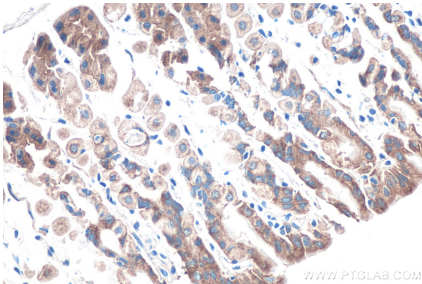
Immunohistochemical analysis of paraffin-embedded human pancreas cancer tissue slide using 11601-1-AP (IGF2BP2 antibody) at dilution of 1:200 (under 10x lens). Heat mediated antigen retrieval with Tris-EDTA buffer (pH 9.0).



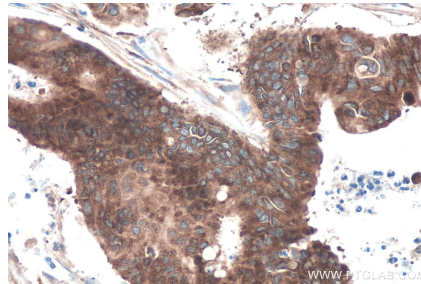
Immunohistochemical analysis of paraffin-embedded human pancreas cancer tissue slide using 11601-1-AP (IGF2BP2 antibody) at dilution of 1:200 (under 40x lens). Heat mediated antigen retrieval with Tris-EDTA buffer (pH 9.0).



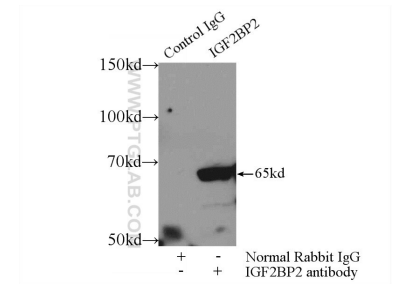
Immunohistochemical analysis of paraffin-embedded human breast cancer tissue slide using 11601-1-AP (IGF2BP2 Antibody) at dilution of 1:200 (under 40x lens). Heat mediated antigen retrieval with Tris-EDTA buffer (pH 9.0).



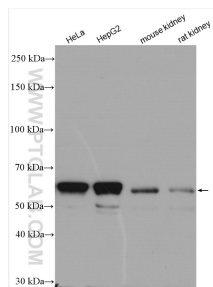
Immunohistochemical analysis of paraffin-embedded mouse stomach tissue slide using 11601-1-AP (IGF2BP2 antibody) at dilution of 1:1000 (under 40x lens). Heat mediated antigen retrieval with Tris-EDTA buffer (pH 9.0).



Immunohistochemical analysis of paraffin-embedded human colon cancer tissue slide using 11601-1-AP (IGF2BP2 antibody) at dilution of 1:1000 (under 40x lens). Heat mediated antigen retrieval with Tris-EDTA buffer (pH 9.0).



IP Result of anti-IGF2BP2 (IP:11601-1-AP, 3ug; Detection:11601-1-AP 1:500) with HEK-293 cells lysate 1000ug.



Various lysates were subjected to SDS PAGE followed by western blot with 11601-1-AP (IGF2BP2 antibody) at dilution of 1:8000 incubated at room temperature for 1.5 hours.