

À des fins de recherche uniquement

Anticorps Polyclonal de lapin anti-Cyclophilin B



Numéro de catalogue: 11607-1-AP

Phare

13 Publications

Informations de base

Numéro de catalogue: 11607-1-AP	Numéro d'acquisition GenBank: BC032138	Méthode de purification: Purification par affinité contre l'antigène
Taille: 150ul , Concentration: 650 µg/ml by Nanodrop and 193 µg/ml by Bradford method using BSA as the standard;	Identification du gène (NCBI): 5479	Dilutions recommandées: WB 1:1000-1:6000 IHC 1:50-1:500 IF 1:20-1:200
Hôte: Lapin	Nom complet: peptidylprolyl isomerase B (cyclophilin B)	
Isotype: IgG	MW calculé: 216 aa, 24 kDa	
Immunogen Catalog Number: AG2161	MW observés: 19-24 kDa	

Applications

Applications testées:

IF, IHC, WB, ELISA

Demandes citées:

IF, IHC, WB

Spécificité de l'espèce:

Humain, souris

Espèces citées:

Humain, singe, souris

Remarque-IHC: il est suggéré de démasquer l'antigène avec un tampon de TE buffer pH 9,0; (*) A défaut, 'le démasquage de l'antigène peut être 'effectué avec un tampon citrate pH 6,0.

Contrôles positifs:

WB : cellules HeLa, cellules HepG2, cellules Jurkat, cellules NIH/3T3, cellules Raji, cellules RAW 264.7, cellules U-937, tissu hépatique de rat, tissu hépatique de souris

IHC : tissu de lymphome humain, tissu de cancer du foie humain, tissu de cancer du pancréas humain

IF : cellules HeLa,

Informations générales

PPIB, also named as CYPB, SCYLP, PPIase B and CYP-S1, belongs to the cyclophilin-type PPIase family and PPIase B subfamily. PPIases accelerate the folding of proteins. It catalyzes the cis-trans isomerization of proline imidic peptide bonds in oligopeptides. PPIB is secreted in biological fluids such as blood or milk and binds to a specific receptor present on the human lymphoblastic cell line Jurkat and on human peripheral blood lymphocytes. The full-length of PPIB has 216aa (24 kDa), and a 33aa-signal peptide could be removed in the mature form (about 19 kDa).

Publications notables

Autrice	Pubmed ID	Journal	Application
Pei-Hsuan Chen	31564558	Mol Cell	WB
Yue Fei F	21136946	Proteomics Clin Appl	WB,IHC
Roberta Besio	31171565	Dis Model Mech	

Stockage

Stockage:

Stocker à -20°C. Stable pendant un an après l'expédition.

Tampon de stockage:

PBS avec azoture de sodium à 0,02 % et glycérol à 50 % pH 7,3

L'aliquotage n'est pas nécessaire pour le stockage à -20C

*** Les 20ul contiennent 0,1% de BSA.

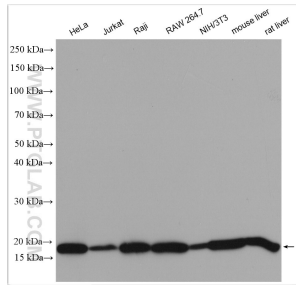
For technical support and original validation data for this product please contact:

T: 1 (888) 4PTGLAB (1-888-478-4522) (toll free in USA), or 1(312) 455-8498 (outside USA)

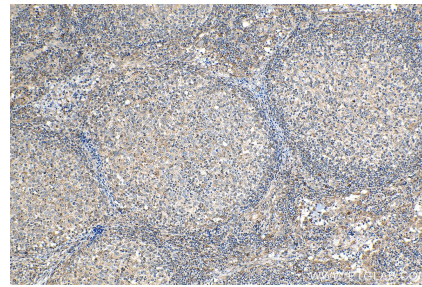
E: proteintech@ptglab.com
W: ptglab.com

This product is exclusively available under Proteintech Group brand and is not available to purchase from any other manufacturer.

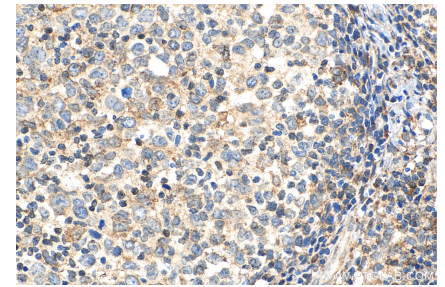
Données de validation sélectionnées



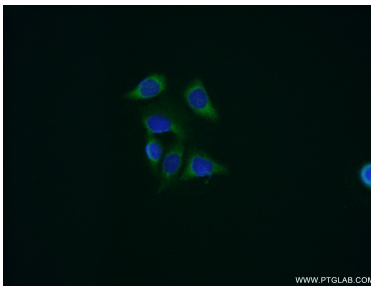
HeLa cells were subjected to SDS PAGE followed by western blot with 11607-1-AP (Cyclophilin B antibody) at dilution of 1:3000 incubated at room temperature for 1.5 hours.



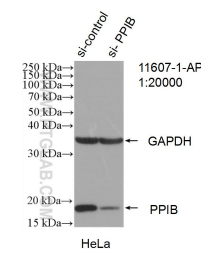
Immunohistochemical analysis of paraffin-embedded human lymphoma tissue slide using 11607-1-AP (Cyclophilin B antibody) at dilution of 1:200 (under 10x lens). Heat mediated antigen retrieval with Tris-EDTA buffer (pH 9.0).



Immunohistochemical analysis of paraffin-embedded human lymphoma tissue slide using 11607-1-AP (Cyclophilin B antibody) at dilution of 1:200 (under 40x lens). Heat mediated antigen retrieval with Tris-EDTA buffer (pH 9.0).



Immunofluorescent analysis of HeLa cells using 11607-1-AP (Cyclophilin B antibody) at dilution of 1:50 and Alexa Fluor 488-conjugated AffiniPure Goat Anti-Rabbit IgG(H+L).



WB result of Cyclophilin B antibody (11607-1-AP; 1:20000; incubated at room temperature for 1.5 hours) with sh-Control and sh-Cyclophilin B transfected HeLa cells.