

À des fins de recherche uniquement

Anticorps Polyclonal de lapin anti-EPSTI1



Numéro de catalogue: 11627-1-AP

Phare

4 Publications

Informations de base

Numéro de catalogue: 11627-1-AP	Numéro d'acquisition GenBank: BC023660	Méthode de purification: Purification par affinité contre l'antigène
Taille: 150ul, Concentration: 350 µg/ml by Nanodrop and 133 µg/ml by Bradford method using BSA as the standard;	Identification du gène (NCBI): 94240	Dilutions recommandées: WB 1:200-1:1000 IHC 1:20-1:200
Hôte: Lapin	Nom complet: epithelial stromal interaction 1 (breast)	
Isotype: IgG	MW calculé 410 aa, 47 kDa	
Immunogen Catalog Number: AG2157	MW observés: 38-47 kDa	

Applications

Applications testées:

IHC, WB, ELISA

Demandes citées:

IF, IHC, WB

Spécificité de l'espèce:

Humain, souris

Espèces citées:

Humain, souris

Remarque-IHC: il est suggéré de démasquer l'antigène avec un tampon de TE buffer pH 9,0; (*) A défaut, 'le démasquage de l'antigène peut être effectué avec un tampon citrate pH 6,0.

Contrôles positifs:

WB : tissu d'intestin grêle de souris, tissu splénique de souris

IHC : tissu de cancer du sein humain, tissu rénal humain

Informations générales

Real-time PCR revealed highest expression in placenta; strong expression in small intestine, spleen, salivary gland, and testes; and low levels of expression in normal breast and several other tissues. The expression of EPSTI1 was upregulated (range 5.6-72.1) in all 14 breast carcinomas tested. Microdissection revealed that both tumor and stromal tissue overexpressed EPSTI1. (PubMed: 11991720)

Publications notables

Autrice	Pubmed ID	Journal	Application
Chaitra Rao	33970103	Elife	WB
Yan-Rou Bei	35778487	Acta Pharmacol Sin	WB,IHC,IF
Erfei Chen	30572883	Mol Cancer	WB

Stockage

Stockage:

Stocker à -20°C. Stable pendant un an après l'expédition.

Tampon de stockage:

PBS avec azoture de sodium à 0,02 % et glycérol à 50 % pH 7,3

L'aliquotage n'est pas nécessaire pour le stockage à -20C

*** Les 20ul contiennent 0,1% de BSA.

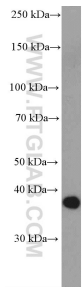
For technical support and original validation data for this product please contact:

T: 1 (888) 4PTGLAB (1-888-478-4522) (toll free in USA), or 1(312) 455-8498 (outside USA)

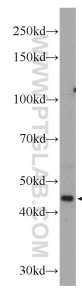
E: proteintech@ptglab.com
W: ptglab.com

This product is exclusively available under Proteintech Group brand and is not available to purchase from any other manufacturer.

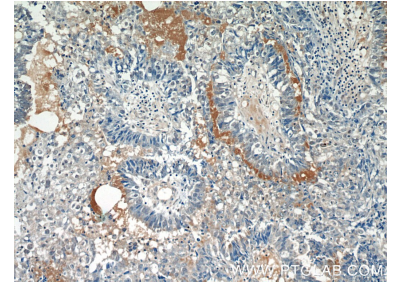
Données de validation sélectionnées



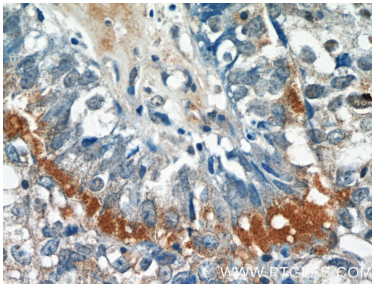
mouse spleen tissue were subjected to SDS PAGE followed by western blot with 11627-1-AP (EPSTI1 antibody) at dilution of 1:1000 incubated at room temperature for 1.5 hours.



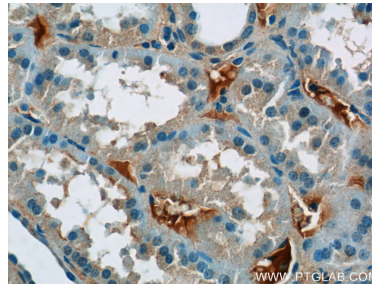
mouse small intestine tissue were subjected to SDS PAGE followed by western blot with 11627-1-AP (EPSTI1 Antibody) at dilution of 1:300 incubated at room temperature for 1.5 hours.



Immunohistochemical analysis of paraffin-embedded human breast cancer tissue slide using 11627-1-AP (EPSTI1 Antibody) at dilution of 1:50 (under 10x lens).



Immunohistochemical analysis of paraffin-embedded human breast cancer tissue slide using 11627-1-AP (EPSTI1 Antibody) at dilution of 1:50 (under 40x lens).



Immunohistochemical analysis of paraffin-embedded human kidney tissue slide using 11627-1-AP (EPSTI1 Antibody) at dilution of 1:50 (under 40x lens).