

À des fins de recherche uniquement

Anticorps Polyclonal de lapin anti-CDC6



Numéro de catalogue: 11640-1-AP

Phare

16 Publications

Informations de base

Numéro de catalogue: 11640-1-AP	Numéro d'acquisition GenBank: BC025232	Méthode de purification: Purification par affinité contre l'antigène
Taille: 150ul, Concentration: 400 µg/ml by Nanodrop and 253 µg/ml by Bradford method using BSA as the standard;	Identification du gène (NCBI): 990	Dilutions recommandées: WB 1:500-1:3000 IHC 1:50-1:500 IF 1:20-1:200
Hôte: Lapin	Nom complet: cell division cycle 6 homolog (S. cerevisiae)	
Isotype: IgG	MW calculé 560 aa, 63 kDa	
Immunogen Catalog Number: AG2228	MW observés: 63 kDa	

Applications

Applications testées:

IF, IHC, WB, ELISA

Demandes citées:

IF, IHC, WB

Spécificité de l'espèce:

Humain, rat, souris

Espèces citées:

Humain, souris

Remarque-IHC: il est suggéré de démasquer l'antigène avec un tampon de TE buffer pH 9,0; (*) A défaut, 'le démasquage de l'antigène peut être 'effectué avec un tampon citrate pH 6,0.

Contrôles positifs:

WB : cellules Jurkat, cellules HeLa, cellules SMMC-7721

IHC : tissu cérébral de souris, tissu de cancer du côlon humain, tissu de côlon humain

IF : cellules HepG2,

Informations générales

CDC6, also named as CDC18L and HsCDC18, belongs to the CDC6/cdc18 family. It is involved in the initiation of DNA replication and functions as a regulator at the early steps of DNA replication. The active Cdc6 functioning as a dimer at replication origins (10793143,15096526). It also participates in checkpoint controls that ensure DNA replication is completed before mitosis is initiated. It localizes in cell nucleus during cell cycle G1, but translocates to the cytoplasm at the start of S phase. The subcellular translocation of this protein during cell cycle is regulated through its phosphorylation by Cdks. Defects in CDC6 are the cause of Meier-Gorlin syndrome type 5 (MGORS5). MGORS5 is a syndrome characterized by bilateral microtia, aplasia/hypoplasia of the patellae, and severe intrauterine and postnatal growth retardation with short stature and poor weight gain. This antibody is a rabbit polyclonal antibody raised against residues near the C terminus of human CDC6.

Publications notables

Autrice	Pubmed ID	Journal	Application
Hao Yang	27708221	Oncotarget	WB
Gang Xiong	32982311	Onco Targets Ther	WB
Xie Mengyan	36176446	Front Pharmacol	WB,IHC

Stockage

Stockage:

Stocker à -20°C. Stable pendant un an après l'expédition.

Tampon de stockage:

PBS avec azoture de sodium à 0,02 % et glycérol à 50 % pH 7,3

L'aliquotage n'est pas nécessaire pour le stockage à -20C

*** Les 20ul contiennent 0,1% de BSA.

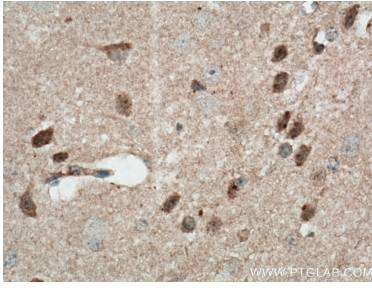
For technical support and original validation data for this product please contact:

T: 1 (888) 4PTGLAB (1-888-478-4522) (toll free in USA), or 1(312) 455-8498 (outside USA)

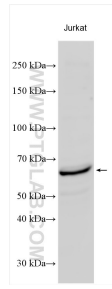
E: proteintech@ptglab.com
W: ptglab.com

This product is exclusively available under Proteintech Group brand and is not available to purchase from any other manufacturer.

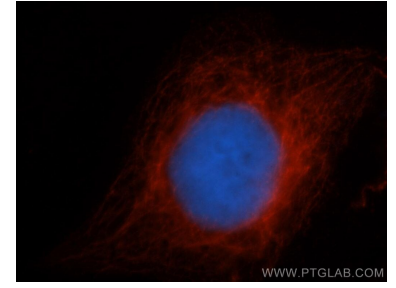
Données de validation sélectionnées



Immunohistochemical analysis of paraffin-embedded mouse brain tissue slide using 11640-1-AP (CDC6 antibody) at dilution of 1:200 (under 40x lens). Heat mediated antigen retrieval with Tris-EDTA buffer (pH 9.0).



Jurkat cells were subjected to SDS PAGE followed by western blot with 11640-1-AP (CDC6 antibody) at dilution of 1:1500 incubated at room temperature for 1.5 hours.



Immunofluorescent analysis of HepG2 cells, using CDC6 antibody 11640-1-AP at 1:50 and Rhodamine-labeled goat anti-rabbit IgG (red). Blue pseudocolor = DAPI (fluorescent DNA dye).