

À des fins de recherche uniquement

# Anticorps Polyclonal de lapin anti-CPI17



Numéro de catalogue: 11658-1-AP

## Informations de base

<b>Numéro de catalogue:</b> 11658-1-AP	<b>Numéro d'acquisition GenBank:</b> BC021089	<b>Méthode de purification:</b> Purification par affinité contre l'antigène
<b>Taille:</b> 150ul, Concentration: 133 µg/ml by Nanodrop and 133 µg/ml by Bradford method using BSA as the standard;	<b>Identification du gène (NCBI):</b> 94274	<b>Dilutions recommandées:</b> WB 1:200-1:1000 IF 1:10-1:100
<b>Hôte:</b> Lapin	<b>Nom complet:</b> protein phosphatase 1, regulatory (inhibitor) subunit 14A	
<b>Isotype:</b> IgG	<b>MW calculé:</b> 147 aa, 17 kDa	
<b>Immunogen Catalog Number:</b> AG2237	<b>MW observés:</b> 17 kDa	

## Applications

<b>Applications testées:</b> IF, WB, ELISA	<b>Contrôles positifs:</b>
<b>Spécificité de l'espèce:</b> Humain	<b>WB :</b> cellules MCF-7, cellules HeLa, cellules HepG2, cellules Jurkat, cellules PC-3, tissu de côlon humain <b>IF :</b> cellules PC-3,

## Informations générales

PPP1R14A, also named as CPI17, belongs to the protein phosphatase 1 (PP1) inhibitor family. This protein is an inhibitor of smooth muscle myosin phosphatase, and has higher inhibitory activity when phosphorylated. Inhibition of myosin phosphatase leads to increased myosin phosphorylation and enhanced smooth muscle contraction. CPI17 has two isoforms: CPI-17alpha (17 kDa) and CPI-17beta (13 kDa).

## Stockage

**Stockage:**  
Stocker à -20°C. Stable pendant un an après l'expédition.  
**Tampon de stockage:**  
PBS avec azoture de sodium à 0,02 % et glycérol à 50 % pH 7,3  
L'aliquotage n'est pas nécessaire pour le stockage à -20C

\*\*\* Les 20ul contiennent 0,1% de BSA.

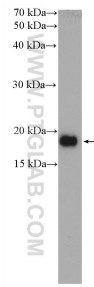
For technical support and original validation data for this product please contact:

T: 1 (888) 4PTGLAB (1-888-478-4522) (toll free in USA), or 1(312) 455-8498 (outside USA)

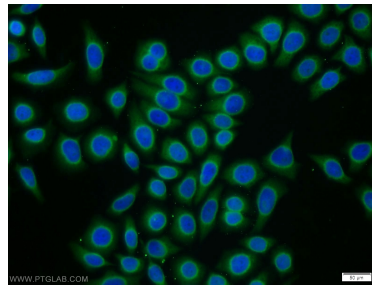
E: [proteintech@ptglab.com](mailto:proteintech@ptglab.com)  
W: [ptglab.com](http://ptglab.com)

This product is exclusively available under Proteintech Group brand and is not available to purchase from any other manufacturer.

## Données de validation sélectionnées



MCF-7 cells were subjected to SDS PAGE followed by western blot with 11658-1-AP (CPI17 antibody) at dilution of 1:300 incubated at room temperature for 1.5 hours.



Immunofluorescent analysis of PC-3 cells using 11658-1-AP (CPI17 antibody) at dilution of 1:25 and Alexa Fluor 488-conjugated AffiniPure Goat Anti-Rabbit IgG(H+L).