

À des fins de recherche uniquement

Anticorps Polyclonal de lapin anti-RRM2



Numéro de catalogue: 11661-1-AP

13 Publications

Informations de base

Numéro de catalogue:

11661-1-AP

Taille:

150ul, Concentration: 500 µg/ml by Nanodrop;

Hôte:

Lapin

Isotype:

IgG

Immunogen Catalog Number:

AG2203

Numéro d'acquisition GenBank:

BC030154

Identification du gène (NCBI):

6241

Nom complet:

ribonucleotide reductase M2 polypeptide

MW calculé

389 aa, 45 kDa

MW observés:

45 kDa

Méthode de purification:

Purification par affinité contre l'antigène

Dilutions recommandées:

WB 1:1000-1:6000

IP 0.5-4.0 ug for IP and 1:500-1:1000 for WB

IHC 1:20-1:200

IF 1:200-1:800

Applications

Applications testées:

IF, IHC, IP, WB, ELISA

Demandes citées:

CoIP, IHC, WB

Spécificité de l'espèce:

Humain

Espèces citées:

Humain

Contrôles positifs:

WB : cellules HeLa, cellules A431, cellules HUVEC, cellules K-562

IP : cellules K-562,

IHC : tissu d'amygdalite humain,

IF : cellules HepG2,

Remarque-IHC: il est suggéré de démasquer l'antigène avec un tampon de TE buffer pH 9,0; (*) À défaut, le démasquage de l'antigène peut être effectué avec un tampon citrate pH 6,0.

Informations générales

Ribonucleotide reductase M2 subunit is one of two subunits that constitute ribonucleotide reductase, the enzyme that catalyzes the conversion of ribonucleotide 5'-diphosphates into 2'-deoxyribonucleotides, a rate-limiting step in the production of 2'-deoxyribonucleoside 5'-diphosphates (dNTP) required for DNA synthesis and repair that is required for DNA synthesis and repair [PMID:20825972, 19250552]. RRM2 is only expressed during the late G1/early S phase, and degraded in late S phase, and the activity of RNR, and therefore DNA synthesis and cell proliferation, is controlled during the cell cycle by the synthesis and degradation of RRM2 subunit [PMID:3894352].

Publications notables

Autrice	Pubmed ID	Journal	Application
Qiao Song	36243980	Nucleic Acids Res	WB, CoIP
Tingbo Ye	35677150	Front Oncol	IHC
Binshan Shi	29587790	Virology	WB

Stockage

Stockage:

Stocker à -20°C. Stable pendant un an après l'expédition.

Tampon de stockage:

PBS avec azoture de sodium à 0,02 % et glycérol à 50 % pH 7,3

L'aliquotage n'est pas nécessaire pour le stockage à -20C

*** Les 20ul contiennent 0,1% de BSA.

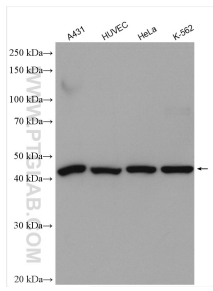
For technical support and original validation data for this product please contact:

T: 1 (888) 4PTGLAB (1-888-478-4522) (toll free in USA), or 1(312) 455-8498 (outside USA)

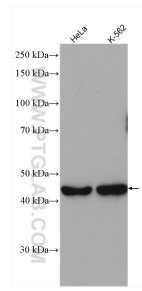
E: proteintech@ptglab.com
W: ptglab.com

This product is exclusively available under Proteintech Group brand and is not available to purchase from any other manufacturer.

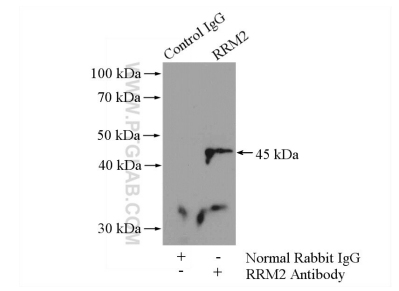
Données de validation sélectionnées



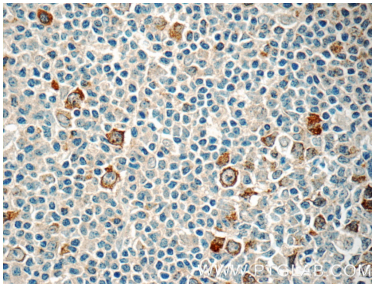
Various lysates were subjected to SDS PAGE followed by western blot with 11661-1-AP (RRM2 antibody) at dilution of 1:5000 incubated at room temperature for 1.5 hours.



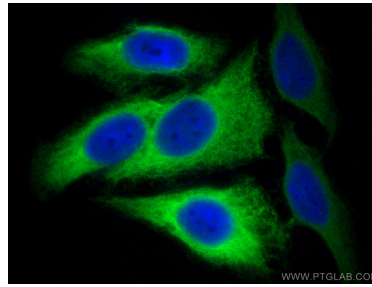
Various lysates were subjected to SDS PAGE followed by western blot with 11661-1-AP (RRM2 antibody) at dilution of 1:3000 incubated at room temperature for 1.5 hours.



IP Result of anti-RRM2 (IP:11661-1-AP, 4ug; Detection:11661-1-AP 1:500) with K-562 cells lysate 1200ug.



Immunohistochemical analysis of paraffin-embedded human tonsillitis tissue slide using 11661-1-AP (RRM2 Antibody) at dilution of 1:50 (under 40x lens).



Immunofluorescent analysis of (-20°C Methanol) fixed HepG2 cells using RRM2 antibody (11661-1-AP) at dilution of 1:400 and CoraLite@488-Conjugated AffiniPure Goat Anti-Rabbit IgG(H+L).