

À des fins de recherche uniquement

Anticorps Polyclonal de lapin anti-RAB1A



Numéro de catalogue: 11671-1-AP

Phare

17 Publications

Informations de base

Numéro de catalogue: 11671-1-AP	Numéro d'acquisition GenBank: BC000905	Méthode de purification: Purification par affinité contre l'antigène
Taille: 150ul, Concentration: 700 µg/ml by Nanodrop;	Identification du gène (NCBI): 5861	Dilutions recommandées: WB 1:2000-1:8000 IHC 1:50-1:500 IF 1:50-1:500
Hôte: Lapin	Nom complet: RAB1A, member RAS oncogene family	
Isotype: IgG	MW calculé: 205 aa, 23 kDa	
Immunogen Catalog Number: AG2264	MW observés: 23 kDa	

Applications

Applications testées:
FC, IF, IHC, WB, ELISA

Demandes citées:
IF, IHC, IP, WB

Spécificité de l'espèce:
Humain, rat, souris

Espèces citées:
Humain, rat, souris

Contrôles positifs:

WB : tissu cérébral de souris, cellules NIH/3T3, cellules U-251, cellules U2OS, tissu cérébral de rat, tissu cérébral humain

IHC : tissu de cancer du poumon humain, tissu de cancer du côlon humain, tissu hépatique humain

IF : cellules NIH/3T3,

Remarque-IHC: il est suggéré de démasquer l'antigène avec un tampon de TE buffer pH 9,0; (*) À défaut, le démasquage de l'antigène peut être effectué avec un tampon citrate pH 6,0.

Informations générales

Rab1A is a member of the Rab family of small GTPases with a well characterized function in the regulation of vesicle trafficking from the endoplasmic reticulum to the Golgi apparatus and within Golgi compartments. Rab1A has recently been reported an mTORC1 activator and a colorectal oncogene (Janice D. Thomas. et al. 2014. Cancer cell).

Publications notables

Autrice	Pubmed ID	Journal	Application
Ranran Sun	33008587	Biochem Biophys Res Commun	WB
Tinglei Huang	34627950	Cancer Lett	WB,IHC,IF
Xinxin Wang	27902464	Aging (Albany NY)	WB,IHC

Stockage

Stockage:

Stocker à -20°C. Stable pendant un an après l'expédition.

Tampon de stockage:

PBS avec azoture de sodium à 0,02 % et glycérol à 50 % pH 7,3

L'aliquotage n'est pas nécessaire pour le stockage à -20C

*** Les 20ul contiennent 0,1% de BSA.

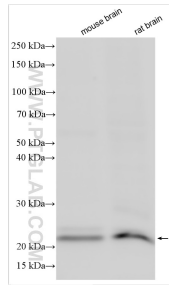
For technical support and original validation data for this product please contact:

T: 1 (888) 4PTGLAB (1-888-478-4522) (toll free in USA), or 1(312) 455-8498 (outside USA)

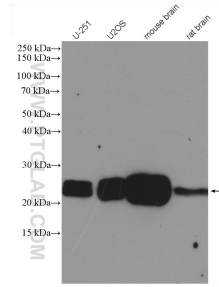
E: proteintech@ptglab.com
W: ptglab.com

This product is exclusively available under Proteintech Group brand and is not available to purchase from any other manufacturer.

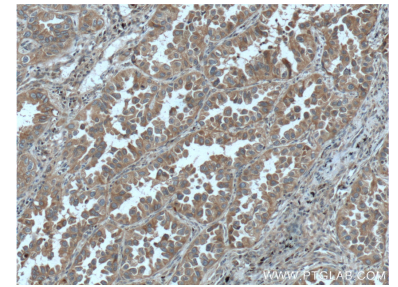
Données de validation sélectionnées



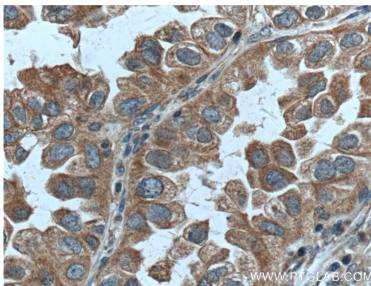
Various lysates were subjected to SDS PAGE followed by western blot with 11671-1-AP (RAB1A antibody) at dilution of 1:12000 incubated at room temperature for 1.5 hours.



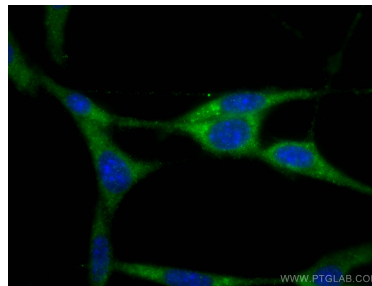
Various lysates were subjected to SDS PAGE followed by western blot with 11671-1-AP (RAB1A antibody) at dilution of 1:2000 incubated at 4 degree celsius over night.



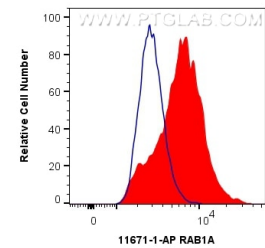
Immunohistochemical analysis of paraffin-embedded human lung cancer tissue slide using 11671-1-AP (RAB1A Antibody) at dilution of 1:200 (under 10x lens). Heat mediated antigen retrieval with Tris-EDTA buffer (pH 9.0).



Immunohistochemical analysis of paraffin-embedded human lung cancer tissue slide using 11671-1-AP (RAB1A Antibody) at dilution of 1:200 (under 40x lens). Heat mediated antigen retrieval with Tris-EDTA buffer (pH 9.0).



Immunofluorescent analysis of (-20°C Ethanol) fixed NIH/3T3 cells using RAB1A antibody (11671-1-AP) at dilution of 1:200 and CoraLite® 488-Conjugated AffiniPure Goat Anti-Rabbit IgG(H+L).



1X10⁶ C2C12 cells were intracellularly stained with 0.5 ug Anti-Human RAB1A (11671-1-AP) and CoraLite® 488-Conjugated AffiniPure Goat Anti-Rabbit IgG(H+L) at dilution 1:1000 (red), or 0.5 ug Control Antibody. Cells were fixed with 4% PFA and permeabilized with Flow Cytometry Perm Buffer (PF00011-C).



Various lysates were subjected to SDS PAGE followed by western blot with 11671-1-AP (RAB1A antibody) at dilution of 1:10000 incubated at room temperature for 1.5 hours.