

À des fins de recherche uniquement

# Anticorps Polyclonal de lapin anti-ARF4



Numéro de catalogue: 11673-1-AP

Phare

36 Publications

## Informations de base

Numéro de catalogue:

11673-1-AP

Taille:

150ul, Concentration: 400 µg/ml by Nanodrop;

Hôte:

Lapin

Isotype:

IgG

Immunogen Catalog Number:

AG2272

Numéro d'acquisition GenBank:

BC003364

Identification du gène (NCBI):

378

Nom complet:

ADP-ribosylation factor 4

MW calculé

180 aa, 21 kDa

MW observés:

16 kDa, 21 kDa

Méthode de purification:

Purification par affinité contre l'antigène

Dilutions recommandées:

WB 1:1000-1:6000

IP 0.5-4.0 µg for IP and 1:500-1:1000 for WB

IHC 1:50-1:500

IF 1:50-1:500

## Applications

Applications testées:

FC (Intra), IF, IHC, IP, WB, ELISA

Demandes citées:

IF, IHC, WB

Spécificité de l'espèce:

Humain, rat, souris

Espèces citées:

Humain, souris

Contrôles positifs:

WB : cellules HT-29, cellules HeLa, cellules HepG2, cellules K-562, tissu cérébral de rat, tissu cérébral de souris

IP : tissu cérébral de souris,

IHC : tissu de cancer du sein humain,

IF : cellules HepG2,

**Remarque-IHC: il est suggéré de démasquer l'antigène avec un tampon de TE buffer pH 9,0; (\*) À défaut, le démasquage de l'antigène peut être effectué avec un tampon citrate pH 6,0.**

## Informations générales

ARF4, also named as ARF2, belongs to the small GTPase superfamily and Arf family. ADP-ribosylation factors (ARFs) are members of the ARF family of GTP-binding proteins of the Ras superfamily, with 20 kDa protein size. ARFs bind and regulate GTP/GDP cycle by alternating between the active GTP-bound and inactive GDP-bound conformations. ARF family proteins are essential and ubiquitous in eukaryotes. Six highly conserved members of the family have been identified in mammalian cells. They function in vesicular traffic and actin remodelling and other bioprocesses in cells. ARF4 and ARF5 are class II ARFs. Their function are not fully described. (PMID: 7759471, PMID: 16042562). This antibody can bind ARFs for the close sequences.

## Publications notables

Autrice	Pubmed ID	Journal	Application
Jain Sachi S	23050017	PLoS One	WB
Arisa Ochiai	34523057	Neurochem Res	WB
Ayako Hanai	26330566	J Biochem	IF

## Stockage

Stockage:

Stocker à -20°C. Stable pendant un an après l'expédition.

Tampon de stockage:

PBS avec azoture de sodium à 0,02 % et glycérol à 50 % pH 7,3

L'aliquotage n'est pas nécessaire pour le stockage à -20C

\*\*\* Les 20ul contiennent 0,1% de BSA.

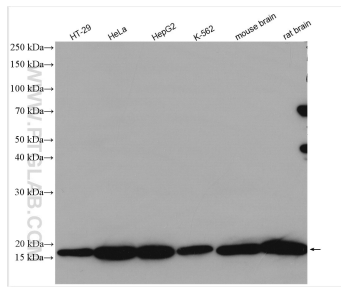
For technical support and original validation data for this product please contact:

T: 1 (888) 4PTGLAB (1-888-478-4522) (toll free in USA), or 1(312) 455-8498 (outside USA)

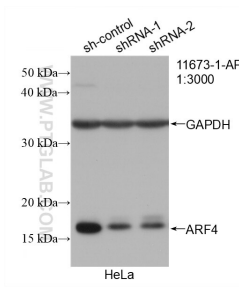
E: proteintech@ptglab.com  
W: ptglab.com

This product is exclusively available under Proteintech Group brand and is not available to purchase from any other manufacturer.

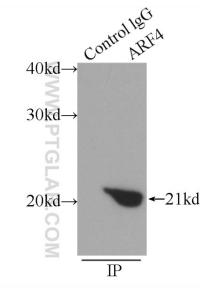
## Données de validation sélectionnées



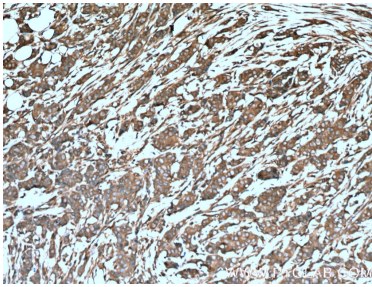
Various lysates were subjected to SDS PAGE followed by western blot with 11673-1-AP (ARF4 antibody) at dilution of 1:3000 incubated at room temperature for 1.5 hours.



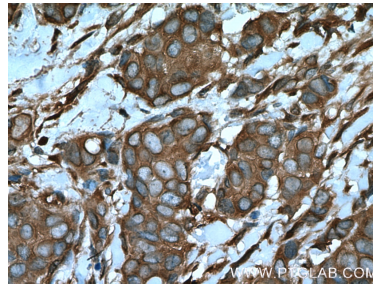
WB result of ARF4 antibody (11673-1-AP; 1:3000; incubated at room temperature for 1.5 hours) with sh-Control and sh-ARF4 transfected HeLa cells.



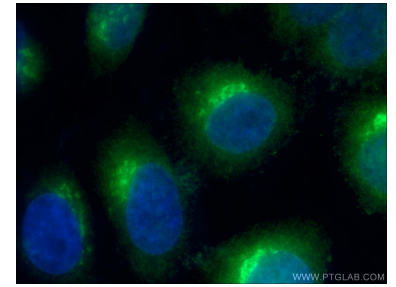
IP Result of anti-ARF4 (IP:11673-1-AP, 3ug; Detection:11673-1-AP 1:600) with mouse brain tissue lysate 5200ug.



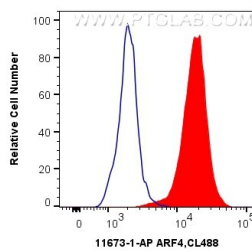
Immunohistochemical analysis of paraffin-embedded human breast cancer tissue slide using 11673-1-AP (ARF4 Antibody) at dilution of 1:200 (under 10x lens). Heat mediated antigen retrieval with Tris-EDTA buffer (pH 9.0).



Immunohistochemical analysis of paraffin-embedded human breast cancer tissue slide using 11673-1-AP (ARF4 Antibody) at dilution of 1:200 (under 40x lens). Heat mediated antigen retrieval with Tris-EDTA buffer (pH 9.0).



Immunofluorescent analysis of (4% PFA) fixed HepG2 cells using 11673-1-AP (ARF4 antibody) at dilution of 1:50 and Alexa Fluor 488-conjugated AffiniPure Goat Anti-Rabbit IgG(H+L).



$1 \times 10^6$  K-562 cells were intracellularly stained with 0.4 ug Anti-Human ARF4 (11673-1-AP) and CoraLite®488-Conjugated AffiniPure Goat Anti-Rabbit IgG(H+L) at dilution 1:1000 (red), or 0.4 ug Control Antibody. Cells were fixed with 4% PFA and permeabilized with Flow Cytometry Perm Buffer (PF00011-C).