

À des fins de recherche uniquement

# Anticorps Polyclonal de lapin anti-PDLIM1/CLP36



Numéro de catalogue: 11674-1-AP

Phare

6 Publications

## Informations de base

Numéro de catalogue:  
11674-1-AP

Taille:  
150ul, Concentration: 600 µg/ml by Nanodrop and 600 µg/ml by Bradford method using BSA as the standard;

Hôte:  
Lapin

Isotype:  
IgG

Immunogen Catalog Number:  
AG2274

Numéro d'acquisition GenBank:  
BC000915

Identification du gène (NCBI):  
9124

Nom complet:  
PDZ and LIM domain 1

MW calculé  
329 aa, 36 kDa

MW observés:  
36 kDa

Méthode de purification:  
Purification par affinité contre l'antigène

Dilutions recommandées:  
WB 1:1000-1:6000  
IP 0.5-4.0 ug for IP and 1:500-1:1000 for WB  
IHC 1:20-1:200  
IF 1:200-1:800

## Applications

Applications testées:  
FC, IF, IHC, IP, WB, ELISA

Demandes citées:  
IF, WB

Spécificité de l'espèce:  
Humain, rat, souris

Espèces citées:  
Humain, rat, souris

**Remarque-IHC: il est suggéré de démasquer l'antigène avec un tampon de TE buffer pH 9,0; (\*) A défaut, 'le démasquage de l'antigène peut être 'effectué avec un tampon citrate pH 6,0.**

Contrôles positifs:

WB : cellules C2C12, poumon de souris, tissu cardiaque de souris, tissu d'iléon humain, tissu pulmonaire humain

IP : tissu cardiaque de souris,

IHC : tissu de cancer du pancréas humain,

IF : cellules MCF-7,

## Informations générales

PDLIM1, also named as CLIM1, CLP-36, CLP36, hCLIM1 and Elfin, is a member of the actinin-associated LIM protein (ALP)/enigma protein family, plays a role in neurite outgrowth in the peripheral nervous system. It is a cytoskeletal protein that may act as an adapter that brings other proteins (like kinases) to the cytoskeleton. PDLIM1 and PALLD formed a complex in the dorsal root ganglion (DRG) and PDLIM1 and PALLD were colocalized in the neurites and cell bodies of primary DRG neurons. PDLIM1 may interact with PALLD to influence neurite outgrowth during sciatic nerve regeneration. (PMID: 20381583)

## Publications notables

Autrice	Pubmed ID	Journal	Application
Yusha Wang	31750630	EMBO Rep	WB
Chao Liu	26986811	Autophagy	WB,IF
Yongliang Shang	27310465	Autophagy	WB

## Stockage

Stockage:

Stocker à -20°C. Stable pendant un an après l'expédition.

Tampon de stockage:

PBS avec azoture de sodium à 0,02 % et glycérol à 50 % pH 7,3

L'aliquotage n'est pas nécessaire pour le stockage à -20C

\*\*\* Les 20ul contiennent 0,1% de BSA.

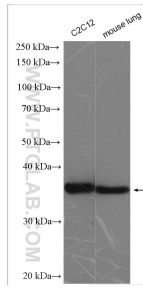
For technical support and original validation data for this product please contact:

T: 1 (888) 4PTGLAB (1-888-478-4522) (toll free in USA), or 1(312) 455-8498 (outside USA)

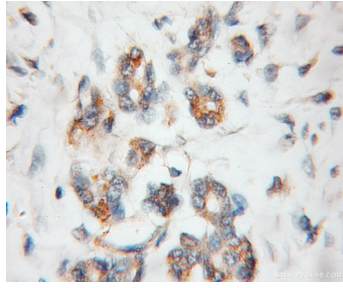
E: proteintech@ptglab.com  
W: ptglab.com

This product is exclusively available under Proteintech Group brand and is not available to purchase from any other manufacturer.

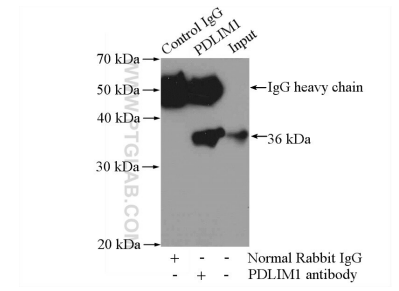
## Données de validation sélectionnées



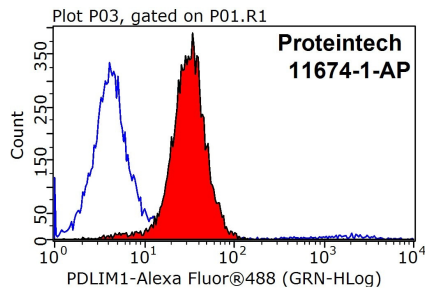
Various lysates were subjected to SDS PAGE followed by western blot with 11674-1-AP (PDLIM1/CLP36 antibody) at dilution of 1:3000 incubated at room temperature for 1.5 hours.



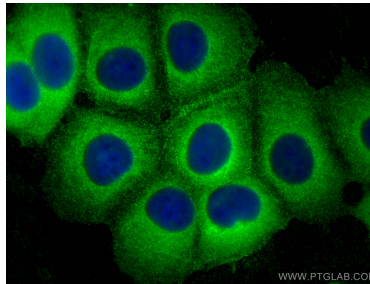
Immunohistochemical analysis of paraffin-embedded human pancreas cancer using 11674-1-AP (PDLIM1/CLP36 antibody) at dilution of 1:50 (under 10x lens).



IP Result of anti-PDLIM1/CLP36 (IP:11674-1-AP, 3ug; Detection:11674-1-AP 1:600) with mouse heart tissue lysate 4000ug.



1X10<sup>6</sup> MCF-7 cells were stained with 0.2ug PDLIM1/CLP36 antibody (11674-1-AP, red) and control antibody (blue). Fixed with 90% MeOH blocked with 3% BSA (30 min). Alexa Fluor 488-conjugated AffiniPure Goat Anti-Rabbit IgG(H+L) with dilution 1:1000.



Immunofluorescent analysis of (-20°C Methanol) fixed MCF-7 cells using PDLIM1/CLP36 antibody (11674-1-AP) at dilution of 1:400 and CoraLite@488-Conjugated AffiniPure Goat Anti-Rabbit IgG(H+L).