

À des fins de recherche uniquement

Anticorps Polyclonal de lapin anti-Profilin 1



Numéro de catalogue: 11680-1-AP

Phare

10 Publications

Informations de base

Numéro de catalogue:
11680-1-AP

Taille:
150ul, Concentration: 500 µg/ml by Nanodrop and 373 µg/ml by Bradford method using BSA as the standard;

Hôte:
Lapin

Isotype:
IgG

Immunogen Catalog Number:
AG2286

Numéro d'acquisition GenBank:
BC006768

Identification du gène (NCBI):
5216

Nom complet:
profilin 1

MW calculé
140 aa, 15 kDa

MW observés:
15 kDa

Méthode de purification:
Purification par affinité contre l'antigène

Dilutions recommandées:
WB 1:1000-1:6000
IHC 1:20-1:200

Applications

Applications testées:
IHC, WB, ELISA

Demandes citées:
IF, IHC, IP, WB

Spécificité de l'espèce:
Humain, rat, souris

Espèces citées:
Humain, rat, souris

Remarque-IHC: il est suggéré de démasquer l'antigène avec un tampon de TE buffer pH 9,0; (*) A défaut, le démasquage de l'antigène peut être effectué avec un tampon citrate pH 6,0.

Contrôles positifs:

WB : tissu cérébral humain, cellules HeLa, cellules Jurkat, cellules NIH/3T3

IHC : tissu de cancer du côlon humain,

Informations générales

Profilin-1 (PFN1) plays an important role in the control of actin dynamics, and could represent an important therapeutic target in several diseases. PFN1 is identified as a huntingtin aggregation inhibitor, and may serve as a tumor-suppressor. PFN1 is crucial for the conversion of monomeric (G)-actin to filamentous (F)-actin. Amyotrophic lateral sclerosis (ALS) is a late-onset neurodegenerative disorder resulting from motor neuron death. Cells expressing PFN1 mutants contain ubiquitinated, insoluble aggregates that in many cases contain the ALS-associated protein TDP-43. Recently, PFN1 is a potential biomarker for bladder cancer aggressiveness and may be of great clinical importance.

Publications notables

Autrice	Pubmed ID	Journal	Application
Bo Ma	30235220	PLoS One	WB
Yu Lian	30326930	J Exp Clin Cancer Res	WB
Dayun Yang	24818882	Biomaterials	WB

Stockage

Stockage:

Stocker à -20°C. Stable pendant un an après l'expédition.

Tampon de stockage:

PBS avec azotate de sodium à 0,02 % et glycérol à 50 % pH 7,3

L'aliquotage n'est pas nécessaire pour le stockage à -20C

*** Les 20ul contiennent 0,1% de BSA.

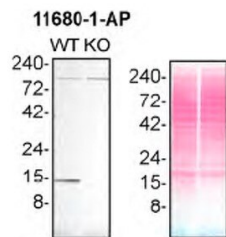
For technical support and original validation data for this product please contact:

T: 1 (888) 4PTGLAB (1-888-478-4522) (toll free in USA), or 1(312) 455-8498 (outside USA)

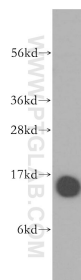
E: proteintech@ptglab.com
W: ptglab.com

This product is exclusively available under Proteintech Group brand and is not available to purchase from any other manufacturer.

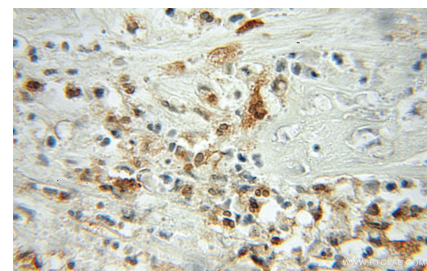
Données de validation sélectionnées



HAP1 (WT and PFN1 KO) lysates prepared with NP-40 buffer, 50 µg protein loaded. 11680-1-AP incubated at 1:6000 at 4°C overnight in 5% milk in TBST. Ponceau stained transfers shown on right. Data provided by YCharOS, an open science company with a mission to validate commercial antibodies to improve scientific reproducibility and transparency.



human brain tissue were subjected to SDS PAGE followed by western blot with 11680-1-AP (Profilin 1 antibody) at dilution of 1:500 incubated at room temperature for 1.5 hours.



Immunohistochemical analysis of paraffin-embedded human colon cancer using 11680-1-AP (Profilin 1 antibody) at dilution of 1:50 (under 10x lens).