

À des fins de recherche uniquement

# Anticorps Polyclonal de lapin anti-PSMB6



Numéro de catalogue: 11684-2-AP

3 Publications

## Informations de base

Numéro de catalogue: 11684-2-AP	Numéro d'acquisition GenBank: BC000835	Méthode de purification: Purification par affinité contre l'antigène
Taille: 150ul , Concentration: 450 µg/ml by Nanodrop and 227 µg/ml by Bradford method using BSA as the standard;	Identification du gène (NCBI): 5694	Dilutions recommandées: WB 1:500-1:2000 IHC 1:50-1:500 IF 1:50-1:500
Hôte: Lapin	Nom complet: proteasome (prosome, macropain) subunit, beta type, 6	
Isotype: IgG	MW calculé 239 aa, 25 kDa	
Immunogen Catalog Number: AG2296	MW observés: 25 kDa	

## Applications

### Applications testées:

IF, IHC, WB, ELISA

### Demandes citées:

WB

### Spécificité de l'espèce:

Humain, rat, souris

### Espèces citées:

rat, souris

**Remarque-IHC: il est suggéré de démasquer l'antigène avec un tampon de TE buffer pH 9,0; (\*) A défaut, 'le démasquage de l'antigène peut être effectué avec un tampon citrate pH 6,0.**

### Contrôles positifs:

WB : cellules HeLa, cellules Caco-2, tissu cérébral de rat, tissu cérébral de souris, tissu cérébral humain foetal, tissu hépatique humain

IHC : tissu de cancer du côlon humain, tissu de gliome humain

IF : cellules HeLa,

## Informations générales

PSMB6(Proteasome subunit beta type-6) is also named as LMPY, Y and belongs to the peptidase T1B family. The proteasome is a multicatalytic proteinase complex which is characterized by its ability to cleave peptides with Arg, Phe, Tyr, Leu, and Glu adjacent to the leaving group at neutral or slightly basic pH. It may also catalyze basal processing of intracellular antigens. It can be up-regulated in anaplastic thyroid cancer cell lines and down-regulated by IFNG/IFN-gamma (at protein level)(PMID:8066462;15613457).

## Publications notables

Autrice	Pubmed ID	Journal	Application
Xin Xie	35710020	Biochem Pharmacol	WB
Wenjin Guo	29723850	Cell Physiol Biochem	WB
Chunhong Liu	37456679	JHEP Rep	WB

## Stockage

### Stockage:

Stocker à -20°C. Stable pendant un an après l'expédition.

### Tampon de stockage:

PBS avec azoture de sodium à 0,02 % et glycérol à 50 % pH 7,3

L'aliquotage n'est pas nécessaire pour le stockage à -20C

\*\*\* Les 20ul contiennent 0,1% de BSA.

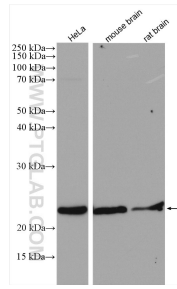
For technical support and original validation data for this product please contact:

T: 1 (888) 4PTGLAB (1-888-478-4522) (toll free in USA), or 1(312) 455-8498 (outside USA)

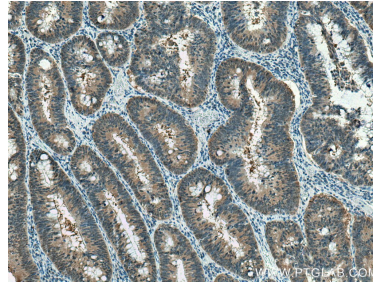
E: proteintech@ptglab.com  
W: ptglab.com

This product is exclusively available under Proteintech Group brand and is not available to purchase from any other manufacturer.

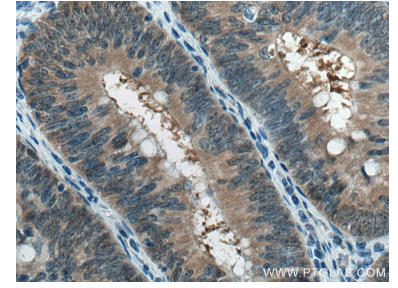
## Données de validation sélectionnées



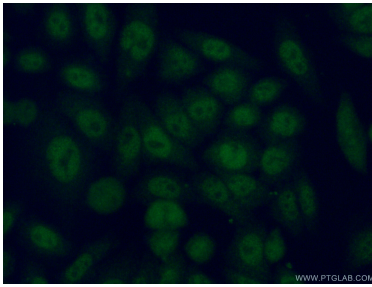
Various lysates were subjected to SDS PAGE followed by western blot with 11684-2-AP (PSMB6 antibody) at dilution of 1:1000 incubated at room temperature for 1.5 hours.



Immunohistochemical analysis of paraffin-embedded human colon cancer tissue slide using 11684-2-AP (PSMB6 antibody) at dilution of 1:200 (under 10x lens). Heat mediated antigen retrieval with Tris-EDTA buffer (pH 9.0).



Immunohistochemical analysis of paraffin-embedded human colon cancer tissue slide using 11684-2-AP (PSMB6 antibody) at dilution of 1:200 (under 40x lens). Heat mediated antigen retrieval with Tris-EDTA buffer (pH 9.0).



Immunofluorescent analysis of (4% PFA) fixed HeLa cells using 11684-2-AP (PSMB6 antibody) at dilution of 1:50 and Alexa Fluor 488-conjugated AffiniPure Goat Anti-Rabbit IgG(H+L).