

À des fins de recherche uniquement

Anticorps Polyclonal de lapin anti-BRE



Numéro de catalogue: 11702-1-AP

3 Publications

Informations de base

Numéro de catalogue:
11702-1-AP

Taille:
150ul, Concentration: 400 µg/ml by Nanodrop and 233 µg/ml by Bradford method using BSA as the standard;

Hôte:
Lapin

Isotype:
IgG

Immunogen Catalog Number:
AG2256

Numéro d'acquisition GenBank:
BC001251

Identification du gène (NCBI):
9577

Nom complet:
brain and reproductive organ-expressed (TNFRSF1A modulator)

MW calculé
383 aa, 44 kDa

MW observés:
40-44 kDa

Méthode de purification:
Purification par affinité contre l'antigène

Dilutions recommandées:
WB 1:500-1:3000
IP 0.5-4.0 ug for IP and 1:500-1:2000 for WB
IHC 1:50-1:500

Applications

Applications testées:
IHC, IP, WB, ELISA

Demandes citées:
WB

Spécificité de l'espèce:
Humain, souris

Espèces citées:
Humain

Remarque-IHC: il est suggéré de démasquer l'antigène avec un tampon de TE buffer pH 9,0; (*) A défaut, 'le démasquage de l'antigène peut être 'effectué avec un tampon citrate pH 6,0.

Contrôles positifs:

WB : cellules HeLa, cellules HepG2, cellules NIH/3T3

IP : cellules HeLa,

IHC : tissu de gliome humain,

Informations générales

BRE, also named as BRCC45, is a death receptor-associated antiapoptotic protein, which is also involved in DNA-damage repair, and K63-specific deubiquitination. BRE and its XIAP-sustaining mechanism could represent novel targets for anti-cancer therapy. BRE may regulate TNF-alpha signaling through its interactions with TNFRSF1A. It plays a role in homeostasis or cellular differentiation in cells of neural, epithelial and germline origins. BRE gene has four isoforms with MW 42-47 kDa.

Publications notables

Autrice	Pubmed ID	Journal	Application
Xiaofei Zhang	28190767	Mol Cell	WB
Mu Yun	34975328	Int J Biol Sci	WB
Wang Bin B	19261749	Genes Dev	WB

Stockage

Stockage:

Stocker à -20°C. Stable pendant un an après l'expédition.

Tampon de stockage:

PBS avec azoture de sodium à 0,02 % et glycérol à 50 % pH 7,3

L'aliquotage n'est pas nécessaire pour le stockage à -20C

*** Les 20ul contiennent 0,1% de BSA.

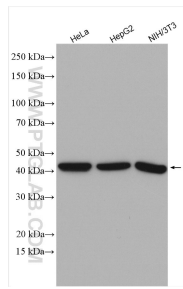
For technical support and original validation data for this product please contact:

T: 1 (888) 4PTGLAB (1-888-478-4522) (toll free in USA), or 1(312) 455-8498 (outside USA)

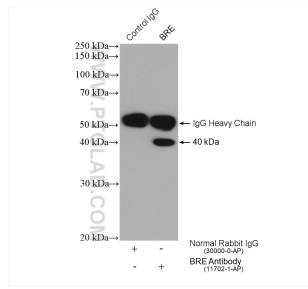
E: proteintech@ptglab.com
W: ptglab.com

This product is exclusively available under Proteintech Group brand and is not available to purchase from any other manufacturer.

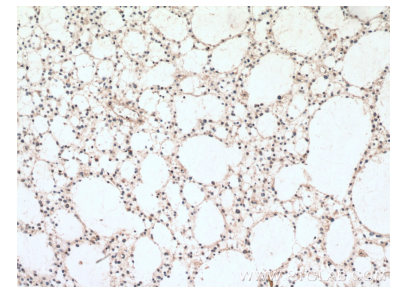
Données de validation sélectionnées



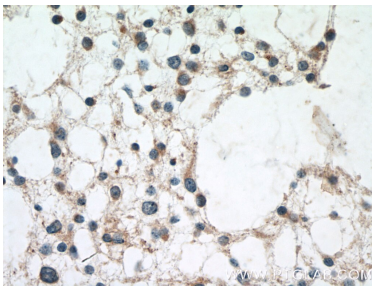
Various lysates were subjected to SDS PAGE followed by western blot with 11702-1-AP (BRE antibody) at dilution of 1:1500 incubated at room temperature for 1.5 hours.



IP result of anti-BRE(IP:11702-1-AP, 4ug; Detection:11702-1-AP 1:1000) with HeLa cells lysate 2320 ug.



Immunohistochemical analysis of paraffin-embedded human gliomas tissue slide using 11702-1-AP (BRE antibody) at dilution of 1:100 (under 10x lens. Heat mediated antigen retrieval with Tris-EDTA buffer (pH 9.0)).



Immunohistochemical analysis of paraffin-embedded human gliomas tissue slide using 11702-1-AP (BRE antibody) at dilution of 1:100 (under 40x lens. Heat mediated antigen retrieval with Tris-EDTA buffer (pH 9.0)).