

À des fins de recherche uniquement

Anticorps Polyclonal de lapin anti-DNAJB6



Numéro de catalogue: 11707-1-AP

Phare

7 Publications

Informations de base

Numéro de catalogue:
11707-1-AP

Taille:
150ul, Concentration: 180 µg/ml by
Bradford method using BSA as the
standard;

Hôte:
Lapin

Isotype:
IgG

Immunogen Catalog Number:
AG2258

Numéro d'acquisition GenBank:
BC000177

Identification du gène (NCBI):
10049

Nom complet:
DnaJ (Hsp40) homolog, subfamily B,
member 6

MW calculé
241 aa, 27 kDa

MW observés:
27 kDa, 38 kDa

Méthode de purification:
Purification par affinité contre
l'antigène

Dilutions recommandées:
WB 1:5000-1:50000
IP 0.5-4.0 ug for IP and 1:500-1:1000
for WB
IHC 1:200-1:800
IF 1:10-1:100

Applications

Applications testées:
IF, IHC, IP, WB, ELISA

Demandes citées:
IF, IHC, WB

Spécificité de l'espèce:
Humain, rat, souris

Espèces citées:
Humain, souris

**Remarque-IHC: il est suggéré de démasquer
l'antigène avec un tampon de TE buffer pH
9.0; (*) A défaut, 'le démasquage de
l'antigène peut être 'effectué avec un
tampon citrate pH 6,0.**

Contrôles positifs:

WB : cellules HEK-293, cellules HeLa, cellules Jurkat,
cellules SH-SY5Y, cellules Y79, tissu cérébral de rat,
tissu cérébral de souris, tissu testiculaire de souris

IP : tissu cérébral de souris,

IHC : tissu de cancer du côlon humain,

IF : cellules HepG2,

Informations générales

DNAJB6, belongs to the heat shock protein 40 (HSP40) family, a noncanonical member of the DNAJ-chaperone family, is mainly expressed in neurons. It plays an important role in recovery from misfolded protein aggregates (PMID: 27276715). As seen by the western blot stained for DNAJB6, there are 2 splice forms of the protein resulting in a longer isoform (38 kDa) and a shorter one (27 kDa). DNAJB6 (27 kDa) isoform but not DNAJB6 (38 kDa) isoform is effective with suppressing cytoplasmic protein aggregation (PMID:20159555).

Publications notables

Autrice	Pubmed ID	Journal	Application
Qianxing Zou	34825148	iScience	WB,IF
Jonas Folke	34334418	J Parkinsons Dis	WB,IHC,IF
Qianxing Zou	35600921	STAR Protoc	WB,IF

Stockage

Stockage:

Stocker à -20°C. Stable pendant un an après l'expédition.

Tampon de stockage:

PBS avec azoture de sodium à 0,02 % et glycérol à 50 % pH 7,3

L'aliquotage n'est pas nécessaire pour le stockage à -20C

*** Les 20ul contiennent 0,1% de BSA.

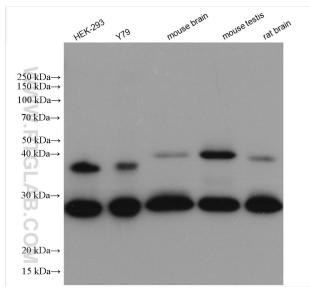
For technical support and original validation data for this product please contact:

T: 1 (888) 4PTGLAB (1-888-478-4522) (toll free
in USA), or 1(312) 455-8498 (outside USA)

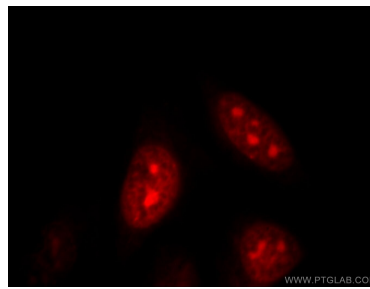
E: proteintech@ptglab.com
W: ptglab.com

This product is exclusively available under Proteintech Group brand and is not available to purchase from any other manufacturer.

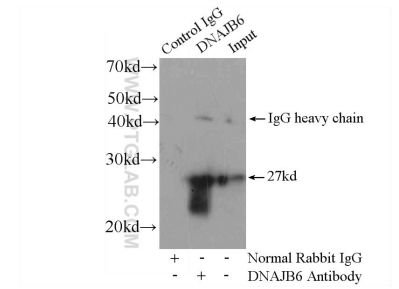
Données de validation sélectionnées



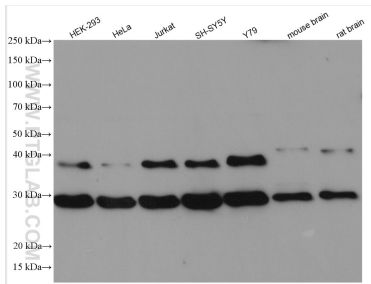
Various lysates were subjected to SDS PAGE followed by western blot with 11707-1-AP (DNAJB6 antibody) at dilution of 1:5000 incubated at room temperature for 1.5 hours.



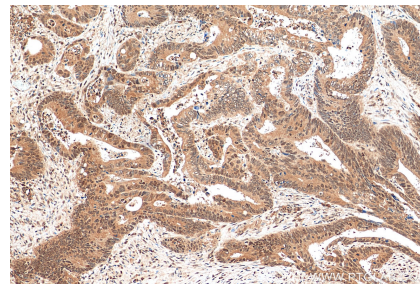
Immunofluorescent analysis of HepG2 cells, using DNAJB6 antibody 11707-1-AP at 1:25 dilution and Rhodamine-labeled goat anti-rabbit IgG (red).



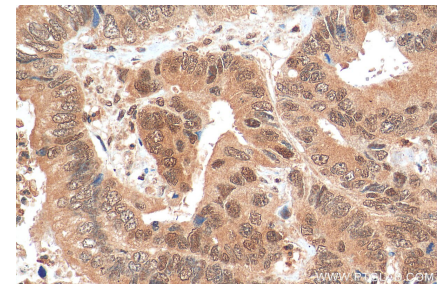
IP Result of anti-DNAJB6 (IP:11707-1-AP, 4ug; Detection:11707-1-AP 1:800) with mouse brain tissue lysate 4000ug.



Various lysates were subjected to SDS PAGE followed by western blot with 11707-1-AP (DNAJB6 antibody) at dilution of 1:10000 incubated at room temperature for 1.5 hours.



Immunohistochemical analysis of paraffin-embedded human colon cancer tissue slide using 11707-1-AP (DNAJB6 antibody) at dilution of 1:400 (under 10x lens). Heat mediated antigen retrieval with Tris-EDTA buffer (pH 9.0).



Immunohistochemical analysis of paraffin-embedded human colon cancer tissue slide using 11707-1-AP (DNAJB6 antibody) at dilution of 1:400 (under 40x lens). Heat mediated antigen retrieval with Tris-EDTA buffer (pH 9.0).