

À des fins de recherche uniquement

Anticorps Polyclonal de lapin anti-Maspin



Numéro de catalogue: 11722-1-AP

4 Publications

Informations de base

Numéro de catalogue: 11722-1-AP	Numéro d'acquisition GenBank: BC020713	Méthode de purification: Purification par affinité contre l'antigène
Taille: 150ul , Concentration: 300 µg/ml by Nanodrop and 150 µg/ml by Bradford method using BSA as the standard;	Identification du gène (NCBI): 5268	Dilutions recommandées: WB 1:500-1:3000 IHC 1:50-1:500 IF 1:50-1:500
Hôte: Lapin	Nom complet: serpin peptidase inhibitor, clade B (ovalbumin), member 5	
Isotype: IgG	MW calculé: 375 aa, 42 kDa	
Immunogen Catalog Number: AG2304	MW observés: 42 kDa	

Applications

Applications testées:
FC, IF, IHC, WB, ELISA

Demandes citées:
IF, IHC, WB

Spécificité de l'espèce:
Humain

Espèces citées:
Humain

Remarque-IHC: il est suggéré de démasquer l'antigène avec un tampon de TE buffer pH 9,0; (*) A défaut, 'le démasquage de l'antigène peut être 'effectué avec un tampon citrate pH 6,0.

Contrôles positifs:

WB : cellules HepG2, cellules A431, cellules HeLa

IHC : tissu de cancer du poumon humain, tissu de cancer du sein humain, tissu pancréatique humain

IF : cellules A431,

Informations générales

SERPINB5, also named as PI-5, Maspin and Serpin B5, belongs to the serpin family and Ov-serpin subfamily. It is a tumor suppressor. It blocks the growth, invasion, and metastatic properties of mammary tumors. As it does not undergo the S (stressed) to R (relaxed) conformational transition characteristic of active serpins, SERPINB5 exhibits no serine protease inhibitory activity.

Publications notables

Autrice	Pubmed ID	Journal	Application
Chang-Fu Yang	24262659	Cancer Lett	WB
Jinfeng Zhu	35614040	Cell Death Dis	IF
Hengwei Zhang	28927140	Oncol Lett	WB

Stockage

Stockage:

Stocker à -20°C. Stable pendant un an après l'expédition.

Tampon de stockage:

PBS avec azoture de sodium à 0,02 % et glycérol à 50 % pH 7,3

L'aliquotage n'est pas nécessaire pour le stockage à -20C

***** Les 20ul contiennent 0,1% de BSA.**

For technical support and original validation data for this product please contact:

T: 1 (888) 4PTGLAB (1-888-478-4522) (toll free in USA), or 1(312) 455-8498 (outside USA)

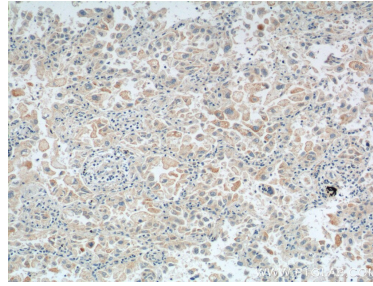
E: proteintech@ptglab.com
W: ptglab.com

This product is exclusively available under Proteintech Group brand and is not available to purchase from any other manufacturer.

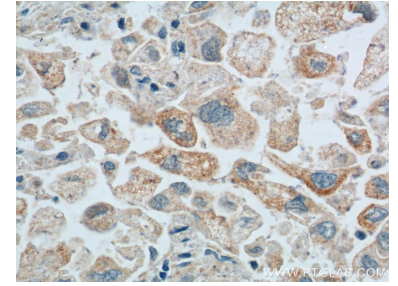
Données de validation sélectionnées



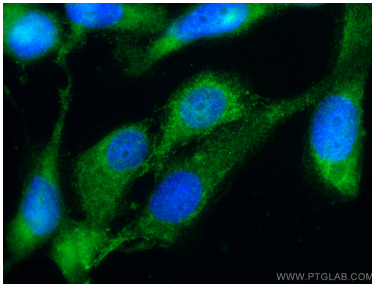
HepG2 cells were subjected to SDS PAGE followed by western blot with 11722-1-AP (Maspin antibody) at dilution of 1:500 incubated at room temperature for 1.5 hours.



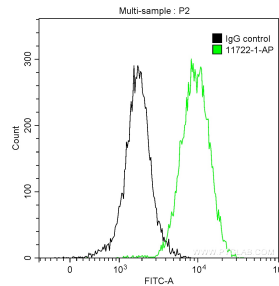
Immunohistochemical analysis of paraffin-embedded human lung cancer tissue slide using 11722-1-AP (Maspin antibody at dilution of 1:200 (under 10x lens). Heat mediated antigen retrieval with Tris-EDTA buffer (pH 9.0).



Immunohistochemical analysis of paraffin-embedded human lung cancer tissue slide using 11722-1-AP (Maspin antibody at dilution of 1:200 (under 40x lens). Heat mediated antigen retrieval with Tris-EDTA buffer (pH 9.0).



Immunofluorescent analysis of (-20°C Ethanol) fixed A431 cells using Maspin antibody (11722-1-AP) at dilution of 1:200 and CoraLite®488-Conjugated AffiniPure Goat Anti-Rabbit IgG(H+L).



1x10⁶ A431 cells were intracellularly stained with 0.5 ug Anti-Human Maspin (11722-1-AP) and CoraLite®488-Conjugated AffiniPure Goat Anti-Rabbit IgG(H+L) at dilution 1:1000 (green), and 0.5 ug Control Antibody. Cells were fixed with 90% MeOH.