

À des fins de recherche uniquement

# Anticorps Polyclonal de lapin anti-IFITM1



Numéro de catalogue: 11727-3-AP

Phare

26 Publications

## Informations de base

Numéro de catalogue:  
11727-3-AP

Taille:  
150ul, Concentration: 600 µg/ml by  
Nanodrop;

Hôte:  
Lapin

Isotype:  
IgG

Immunogen Catalog Number:  
AG2320

Numéro d'acquisition GenBank:  
BC000897

Identification du gène (NCBI):  
8519

Nom complet:  
interferon induced transmembrane  
protein 1 (9-27)

MW calculé  
14 kDa

MW observés:  
14-17 kDa

Méthode de purification:  
Purification par affinité contre  
l'antigène

Dilutions recommandées:  
WB 1:500-1:1000  
IP 0.5-4.0 µg for IP and 1:500-1:1000  
for WB  
IHC 1:50-1:500

## Applications

Applications testées:  
FC, IHC, IP, WB, ELISA

Demandes citées:  
FC, IF, IHC, WB

Spécificité de l'espèce:  
Humain, rat, souris

Espèces citées:  
Chèvre, Humain, Singe vert d'Afrique

**Remarque-IHC: il est suggéré de démasquer l'antigène avec un tampon de TE buffer pH 9,0; (\*) À défaut, le démasquage de l'antigène peut être effectué avec un tampon citrate pH 6,0.**

Contrôles positifs:

WB : cellules HepG2, cellules K-562

IP : cellules ROS1728,

IHC : tissu de lymphome humain, tissu cérébral de souris

## Informations générales

IFITM1(interferon induced transmembrane protein), also named DSPA2a or interferon-induced protein 17 (IFI17), belongs to the CD225 family. It has two transmembrane domain and serves as an IFN-induced antiviral protein that mediates cellular innate immunity to at least three major human pathogens, influenza A H1N1 virus, West Nile virus (WNV), and dengue virus, by inhibiting the early steps of replication. IFITM proteins are recently identified as viral restriction factors that inhibit infection mediated by the influenza A virus (IAV) hemagglutinin (HA) protein. Also they serve as important components of the innate immune system to restrict HIV-1 infection.

## Publications notables

| Autrice      | Pubmed ID | Journal       | Application |
|--------------|-----------|---------------|-------------|
| M. Clement   | 36075894  | Nat Commun    | WB          |
| Jingyou Yu   | 26387945  | Cell Rep      | WB          |
| Huanwei Xing | 33185509  | Viral Immunol | WB          |

## Stockage

Stockage:

Stocker à -20°C. Stable pendant un an après l'expédition.

Tampon de stockage:

PBS avec azoture de sodium à 0,02 % et glycérol à 50 % pH 7,3

L'aliquotage n'est pas nécessaire pour le stockage à -20C

\*\*\* Les 20ul contiennent 0,1% de BSA.

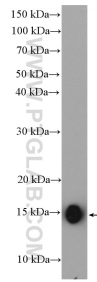
For technical support and original validation data for this product please contact:

T: 1 (888) 4PTGLAB (1-888-478-4522) (toll free  
in USA), or 1(312) 455-8498 (outside USA)

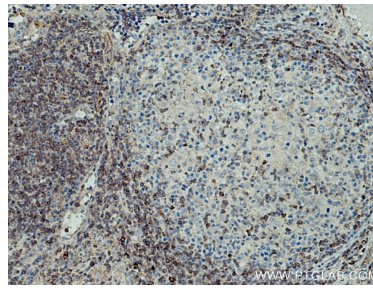
E: proteintech@ptglab.com  
W: ptglab.com

This product is exclusively available under Proteintech Group brand and is not available to purchase from any other manufacturer.

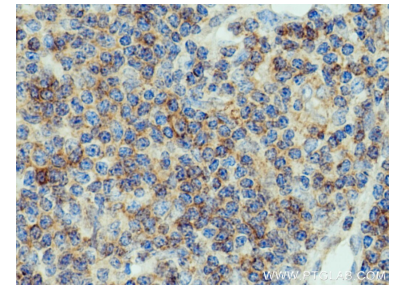
## Données de validation sélectionnées



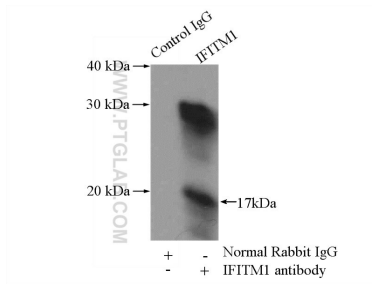
HepG2 cells were subjected to SDS PAGE followed by western blot with 11727-3-AP (IFITM1 antibody) at dilution of 1:600 incubated at room temperature for 1.5 hours.



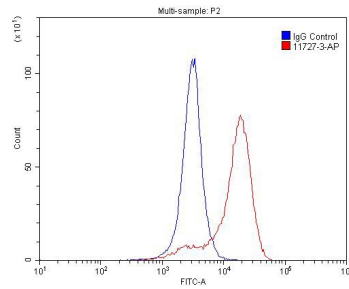
Immunohistochemical analysis of paraffin-embedded human lymphoma tissue slide using 11727-3-AP (IFITM1 antibody) at dilution of 1:200 (under 10x lens). Heat mediated antigen retrieval with Tris-EDTA buffer (pH 9.0).



Immunohistochemical analysis of paraffin-embedded human lymphoma tissue slide using 11727-3-AP (IFITM1 antibody) at dilution of 1:200 (under 40x lens). Heat mediated antigen retrieval with Tris-EDTA buffer (pH 9.0).



IP Result of anti-IFITM1 (IP:11727-3-AP, 4ug; Detection:11727-3-AP 1:500) with ROS1728 cells lysate 3200ug.



$1 \times 10^6$  K-562 cells were stained with 0.2ug IFITM1 antibody (11727-3-AP, red) and control antibody (blue). Fixed with 4% PFA blocked with 3% BSA (30 min). Alexa Fluor 488-conjugated AffiniPure Goat Anti-Rabbit IgG(H+L) with dilution 1:1500.