

À des fins de recherche uniquement

Anticorps Polyclonal de lapin anti-EID1



Numéro de catalogue: 11734-1-AP

3 Publications

Informations de base

Numéro de catalogue: 11734-1-AP	Numéro d'acquisition GenBank: BC024151	Méthode de purification: Purification par affinité contre l'antigène
Taille: 150ul, Concentration: 350 µg/ml by Nanodrop and 133 µg/ml by Bradford method using BSA as the standard;	Identification du gène (NCBI): 23741	Dilutions recommandées: WB 1:500-1:1000 IHC 1:20-1:200 IF 1:10-1:100
Hôte: Lapin	Nom complet: EP300 interacting inhibitor of differentiation 1	
Isotype: IgG	MW calculé: 187 aa, 21 kDa	
Immunogen Catalog Number: AG2336	MW observés: 20-30 kDa	

Applications

Applications testées: IF, IHC, WB, ELISA	Contrôles positifs: WB : cellules HT-1080, cellules U-937 IHC : tissu de cancer du sein humain, IF : cellules HepG2,
Demandes citées: IHC, WB	
Spécificité de l'espèce: Humain	
Espèces citées: Humain	

Remarque-IHC: il est suggéré de démasquer l'antigène avec un tampon de TE buffer pH 9,0; (*) A défaut, 'le démasquage de l'antigène peut être 'effectué avec un tampon citrate pH 6,0.

Informations générales

EID1(EP300 interacting inhibitor of differentiation 1) is a member of the EID protein family, which regulates differentiation, transcription and acetyltransferase activity. EID1 function was originally identified as a transcriptional repressor which regulates cell cycle and differentiation, and leads to genome inactivation and instability by interacting with E3 ubiquitin ligase MDM2. EID1 is mainly located in the cytoplasm. It was translocated into the nuclei under stressed or pathological conditions such as AD patients and APP Tg mice brains. (PMID: 22186421, PMID: 31381951, PMID: 30926163).

Publications notables

Autrice	Pubmed ID	Journal	Application
Hua Liao	21873567	Mol Cell Proteomics	WB
Ying Li	35038162	Folia Histochem Cytobiol	WB,IHC
Yukiko Yoshida	25827227	Proc Natl Acad Sci U S A	WB

Stockage

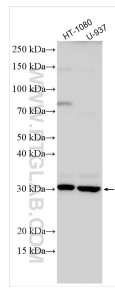
Stockage:
Stocker à -20°C. Stable pendant un an après l'expédition.
Tampon de stockage:
PBS avec azoture de sodium à 0,02 % et glycérol à 50 % pH 7,3
L'aliquotage n'est pas nécessaire pour le stockage à -20C

*** Les 20ul contiennent 0,1% de BSA.

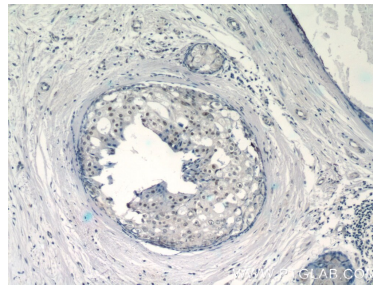
For technical support and original validation data for this product please contact:
T: 1 (888) 4PTGLAB (1-888-478-4522) (toll free in USA), or 1(312) 455-8498 (outside USA)
E: proteintech@ptglab.com
W: ptglab.com

This product is exclusively available under Proteintech Group brand and is not available to purchase from any other manufacturer.

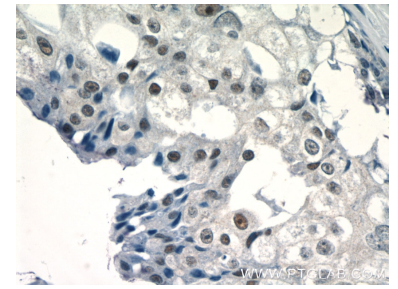
Données de validation sélectionnées



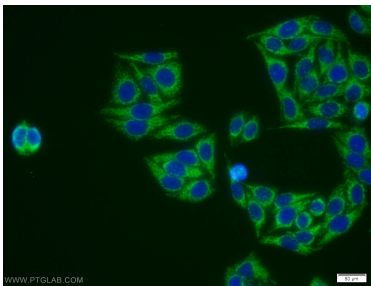
Various lysates were subjected to SDS PAGE followed by western blot with 11734-1-AP (EID1 antibody) at dilution of 1:600 incubated at room temperature for 1.5 hours.



Immunohistochemical analysis of paraffin-embedded human breast cancer tissue slide using 11734-1-AP (EID1 Antibody) at dilution of 1:50 (under 10x lens).



Immunohistochemical analysis of paraffin-embedded human breast cancer tissue slide using 11734-1-AP (EID1 Antibody) at dilution of 1:50 (under 40x lens).



Immunofluorescent analysis of HepG2 cells using 11734-1-AP (EID1 antibody) at dilution of 1:25 and Alexa Fluor 488-conjugated AffiniPure Goat Anti-Rabbit IgG(H+L).