

À des fins de recherche uniquement

Anticorps Polyclonal de lapin anti-ASGR1



Numéro de catalogue: 11739-1-AP

Phare

15 Publications

Informations de base

Numéro de catalogue:
11739-1-AP

Taille:
150ul, Concentration: 650 µg/ml by
Nanodrop;

Hôte:
Lapin

Isotype:
IgG

Immunogen Catalog Number:
AG2310

Numéro d'acquisition GenBank:
BC032130

Identification du gène (NCBI):
432

Nom complet:
asialoglycoprotein receptor 1

MW calculé
291 aa, 33 kDa

MW observés:
40 kDa

Méthode de purification:
Purification par affinité contre
l'antigène

Dilutions recommandées:
WB 1:5000-1:50000
IP 0.5-4.0 µg for IP and 1:1000-1:4000
for WB
IHC 1:1000-1:4000
IF 1:50-1:500

Applications

Applications testées:
FC, IF, IHC, IP, WB, ELISA

Demandes citées:
CoIP, FC, IF, IHC, WB

Spécificité de l'espèce:
Humain, rat, souris

Espèces citées:
Humain, souris

Remarque-IHC: il est suggéré de démasquer l'antigène avec un tampon de TE buffer pH 9,0; (*) À défaut, le démasquage de l'antigène peut être effectué avec un tampon citrate pH 6,0.

Contrôles positifs:

WB: cellules HepG2, tissu hépatique de rat, tissu hépatique de souris, tissu hépatique humain

IP: tissu hépatique de souris,

IHC: tissu hépatique de rat, tissu de cancer du foie humain

IF: tissu de cancer du foie humain, tissu hépatique de rat

Informations générales

Asialoglycoprotein receptor (ASGPR), also known as the hepatic galactose/N-acetylglucosamine (GlcNAc) receptor or Ashwell receptor, is a C-type lectin expressed exclusively in hepatic parenchymal cells. ASGPR consists of two subunits, a major subunit (ASGR1, HL-1) and a minor subunit (ASGR2, HL-2), and specifically recognizes terminal β -linked galactose or GlcNAc on circulating glycoproteins or cells. This receptor plays a critical role in serum glycoprotein homeostasis by mediating the endocytosis and lysosomal degradation of glycoproteins that contain terminal galactose or GlcNAc residues. ASGPR may facilitate hepatic infection by multiple viruses including hepatitis B, and is also a target for liver-specific drug delivery.

Publications notables

Autrice	Pubmed ID	Journal	Application
Juergen Scharner	30965276	Mol Ther Nucleic Acids	WB,IHC
Wai Kit Ma	34921016	Cancer Res	WB
Youngsoo Kim	31303442	Mol Ther	IHC,IF

Stockage

Stockage:
Stocker à -20°C. Stable pendant un an après l'expédition.

Tampon de stockage:
PBS avec azoture de sodium à 0,02 % et glycérol à 50 % pH 7,3
L'aliquotage n'est pas nécessaire pour le stockage à -20C

*** Les 20ul contiennent 0,1% de BSA.

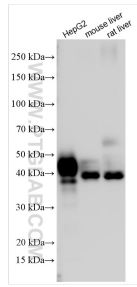
For technical support and original validation data for this product please contact:

T: 1 (888) 4PTGLAB (1-888-478-4522) (toll free in USA), or 1(312) 455-8498 (outside USA)

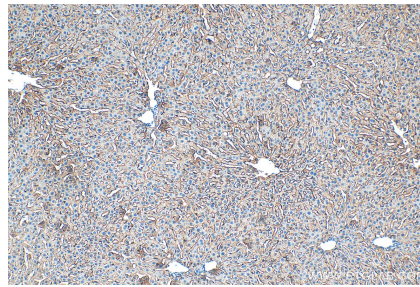
E: proteintech@ptglab.com
W: ptglab.com

This product is exclusively available under Proteintech Group brand and is not available to purchase from any other manufacturer.

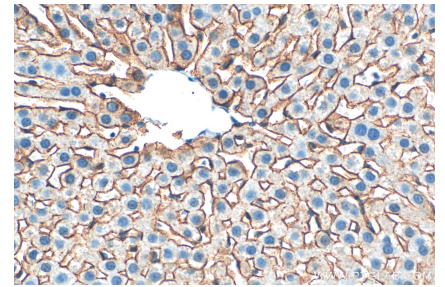
Données de validation sélectionnées



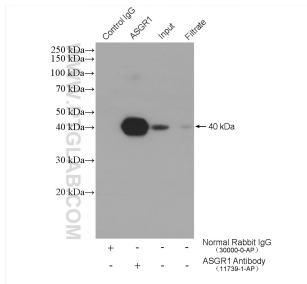
Various lysates were subjected to SDS PAGE followed by western blot with 11739-1-AP (ASGR1 antibody) at dilution of 1:20000 incubated at room temperature for 1.5 hours.



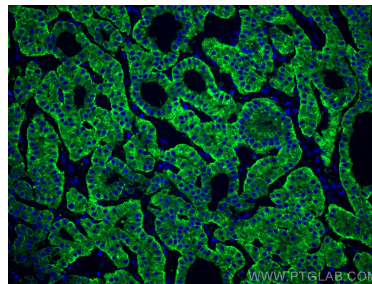
Immunohistochemical analysis of paraffin-embedded rat liver tissue slide using 11739-1-AP (ASGR1 antibody) at dilution of 1:2000 (under 10x lens). Heat mediated antigen retrieval with Tris-EDTA buffer (pH 9.0).



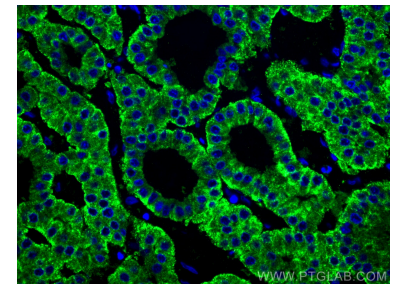
Immunohistochemical analysis of paraffin-embedded rat liver tissue slide using 11739-1-AP (ASGR1 antibody) at dilution of 1:2000 (under 40x lens). Heat mediated antigen retrieval with Tris-EDTA buffer (pH 9.0).



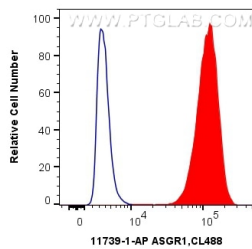
IP result of anti-ASGR1 (IP:11739-1-AP, 4ug; Detection:11739-1-AP 1:2000) with mouse liver tissue lysate 4000 ug.



Immunofluorescent analysis of (4% PFA) fixed human liver cancer tissue using ASGR1 antibody (11739-1-AP) at dilution of 1:200 and CoraLite@488-Conjugated AffiniPure Goat Anti-Rabbit IgG(H+L).



Immunofluorescent analysis of (4% PFA) fixed human liver cancer tissue using ASGR1 antibody (11739-1-AP) at dilution of 1:200 and CoraLite@488-Conjugated AffiniPure Goat Anti-Rabbit IgG(H+L).



1×10^6 HepG2 cells were intracellularly stained with 0.4 ug Anti-Human ASGR1 (11739-1-AP) and CoraLite@488-Conjugated AffiniPure Goat Anti-Rabbit IgG(H+L) at dilution 1:1000 (red), or 0.4 ug Control Antibody. Cells were fixed with 4% PFA and permeabilized with Flow Cytometry Perm Buffer (PF00011-C).