

À des fins de recherche uniquement

Anticorps Polyclonal de lapin anti-PSMB1



Numéro de catalogue: 11749-1-AP

12 Publications

Informations de base

Numéro de catalogue: 11749-1-AP	Numéro d'acquisition GenBank: BC020807	Méthode de purification: Purification par affinité contre l'antigène
Taille: 150ul, Concentration: 550 µg/ml by Nanodrop and 300 µg/ml by Bradford method using BSA as the standard;	Identification du gène (NCBI): 5689	Dilutions recommandées: WB 1:500-1:2000 IHC 1:250-1:1000 IF 1:50-1:500
Hôte: Lapin	Nom complet: proteasome (prosome, macropain) subunit, beta type, 1	
Isotype: IgG	MW calculé: 241 aa, 26 kDa	
Immunogen Catalog Number: AG2345	MW observés: 25 kDa	

Applications

Applications testées:

IF, IHC, WB, ELISA

Demandes citées:

IF, IHC, WB

Spécificité de l'espèce:

Humain, rat, souris

Espèces citées:

Humain, rat, souris

Remarque-IHC: il est suggéré de démasquer l'antigène avec un tampon de TE buffer pH 9,0; (*) A défaut, 'le démasquage de l'antigène peut être 'effectué avec un tampon citrate pH 6,0.

Contrôles positifs:

WB : cellules MCF-7, cellules HeLa, cellules HepG2, cellules NIH/3T3, tissu cérébral humain

IHC : tissu de cancer du foie humain, tissu de cancer du sein humain

IF : cellules U2OS,

Informations générales

PSMB1(Proteasome subunit beta type-1) is also named as PSC5 and belongs to the peptidase T1B family. The proteasome is a multicatalytic proteinase complex which is characterized by its ability to cleave peptides with Arg, Phe, Tyr, Leu, and Glu adjacent to the leaving group at neutral or slightly basic pH. The gene encodes a 241 amino acid protein with a 28 amino acid propeptide and two glycosylation sites.

Publications notables

Autrice	Pubmed ID	Journal	Application
Fangyi Wu	36124946	Rheumatology (Oxford)	WB
Huan-Xiong Chen	25415668	Medicine (Baltimore)	IHC
Guiyou Tian	34010456	EMBO J	WB

Stockage

Stockage:

Stocker à -20°C. Stable pendant un an après l'expédition.

Tampon de stockage:

PBS avec azoture de sodium à 0,02 % et glycérol à 50 % pH 7,3

L'aliquotage n'est pas nécessaire pour le stockage à -20C

*** Les 20ul contiennent 0,1% de BSA.

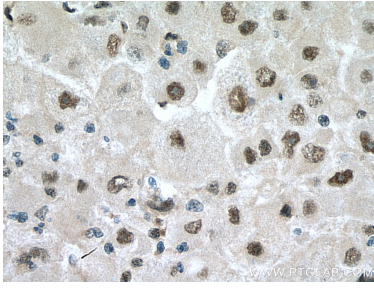
For technical support and original validation data for this product please contact:

T: 1 (888) 4PTGLAB (1-888-478-4522) (toll free in USA), or 1(312) 455-8498 (outside USA)

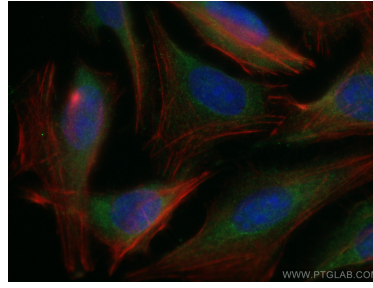
E: proteintech@ptglab.com
W: ptglab.com

This product is exclusively available under Proteintech Group brand and is not available to purchase from any other manufacturer.

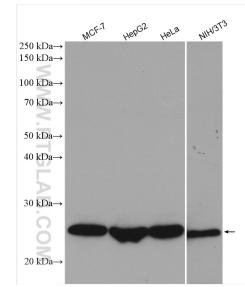
Données de validation sélectionnées



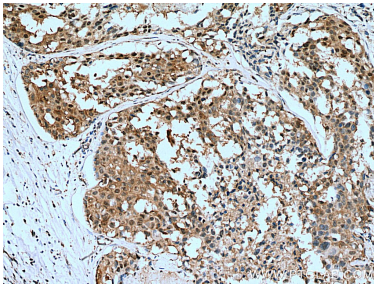
Immunohistochemical analysis of paraffin-embedded human liver cancer tissue slide using 11749-1-AP (PSMB1 antibody) at dilution of 1:500 (under 40x lens). Heat mediated antigen retrieval with Tris-EDTA buffer (pH 9.0).



Immunofluorescent analysis of (-20°C Ethanol) fixed U2OS cells using 11749-1-AP (PSMB1 antibody), at dilution of 1:200 and CoraLite®488-Conjugated AffiniPure Goat Anti-Rabbit IgG(H+L). Red stain with CL594-Phalloidin. Blue stain with DAPI.



Various lysates were subjected to SDS PAGE followed by western blot with 11749-1-AP (PSMB1 antibody) at dilution of 1:1000 incubated at room temperature for 1.5 hours.



Immunohistochemical analysis of paraffin-embedded human breast cancer tissue slide using 11749-1-AP (PSMB1 antibody) at dilution of 1:500 (under 10x lens). Heat mediated antigen retrieval with Tris-EDTA buffer (pH 9.0).