

À des fins de recherche uniquement

# Anticorps Polyclonal de lapin anti-ITLN1



Numéro de catalogue: 11770-1-AP

13 Publications

## Informations de base

Numéro de catalogue:

11770-1-AP

Taille:

150ul, Concentration: 450 µg/ml by Nanodrop and 293 µg/ml by Bradford method using BSA as the standard;

Hôte:

Lapin

Isotype:

IgG

Immunogen Catalog Number:

AG2424

Numéro d'acquisition GenBank:

BC020664

Identification du gène (NCBI):

55600

Nom complet:

intelectin 1 (galactofuranose binding)

MW calculé

313 aa, 35 kDa

MW observés:

35-40 kDa

Méthode de purification:

Purification par affinité contre l'antigène

Dilutions recommandées:

WB 1:500-1:3000

IP 0.5-4.0 ug for IP and 1:500-1:1000 for WB

## Applications

Applications testées:

IP, WB, ELISA

Demandes citées:

FC, IF, IHC, WB

Spécificité de l'espèce:

Humain, rat, souris

Espèces citées:

Humain, souris

Contrôles positifs:

WB : tissu de côlon de souris,

IP : tissu d'appendice de souris,

## Informations générales

ITLN1, also named as Intelectin 1, has no effect on basal glucose uptake but enhances insulin-stimulated glucose uptake in adipocytes. ITLN1 is a glycoprotein made up of three 40 kDa subunits cross-linked by disulfide bonds making up a 120-kDa homo-trimer of 295 amino acids and N-linked oligosaccharides (PMID: 17621593). It may play a role in the defense system against microorganisms. Human intelectin-1 is expressed in intestinal goblet cells, and is present at about 200 ng/mL in serum. Intelectin-1 was also shown to be expressed in human endothelial cells and adipocytes of human abdominal adipose tissue. (PMID: 22768319, PMID: 28640441)

## Publications notables

Autrice	Pubmed ID	Journal	Application
Yaqin Zhang	31897204	Oncol Lett	WB, IHC
Yalong Wang	31753849	J Exp Med	IHC, IF
Nongnuch Singrang	35337980	Fish Shellfish Immunol	WB

## Stockage

Stockage:

Stocker à -20°C. Stable pendant un an après l'expédition.

Tampon de stockage:

PBS avec azoture de sodium à 0,02 % et glycérol à 50 % pH 7,3

L'aliquotage n'est pas nécessaire pour le stockage à -20C

\*\*\* Les 20ul contiennent 0,1% de BSA.

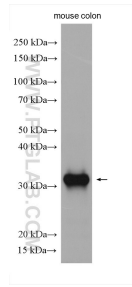
For technical support and original validation data for this product please contact:

T: 1 (888) 4PTGLAB (1-888-478-4522) (toll free in USA), or 1(312) 455-8498 (outside USA)

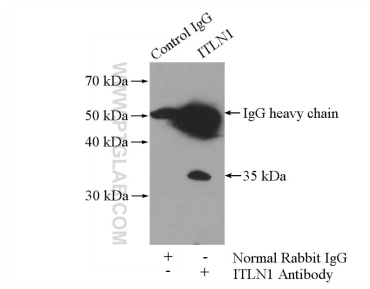
E: proteintech@ptglab.com  
W: ptglab.com

This product is exclusively available under Proteintech Group brand and is not available to purchase from any other manufacturer.

## Données de validation sélectionnées



mouse colon tissue were subjected to SDS PAGE followed by western blot with 11770-1-AP (ITLN1 antibody) at dilution of 1:1500 incubated at room temperature for 1.5 hours.



IP Result of anti-ITLN1 (IP:11770-1-AP, 4ug; Detection:11770-1-AP 1:500) with mouse appendix tissue lysate 4000ug.