

À des fins de recherche uniquement

# Anticorps Polyclonal de lapin anti-RBP4



Numéro de catalogue: 11774-1-AP

Phare

17 Publications

## Informations de base

Numéro de catalogue: 11774-1-AP	Numéro d'acquisition GenBank: BC020633	Méthode de purification: Purification par affinité contre l'antigène
Taille: 150ul , Concentration: 600 µg/ml by Nanodrop;	Identification du gène (NCBI): 5950	Dilutions recommandées: WB 1:1000-1:6000 IHC 1:250-1:1000 IF 1:50-1:500
Hôte: Lapin	Nom complet: retinol binding protein 4, plasma	
Isotype: IgG	MW calculé: 201 aa, 23 kDa	
Immunogen Catalog Number: AG2448	MW observés: 23 kDa	

## Applications

### Applications testées:

IF, IHC, WB, ELISA

### Demandes citées:

CoIP, IF, IHC, WB

### Spécificité de l'espèce:

Humain, rat, souris

### Espèces citées:

Humain, souris, Oie

### Contrôles positifs:

WB : sang humain, plasma humain, tissu hépatique de rat

IHC : tissu oculaire de souris, tissu de cancer du foie humain, tissu hépatique de souris

IF : tissu oculaire de souris,

**Remarque-IHC: il est suggéré de démasquer l'antigène avec un tampon de TE buffer pH 9,0; (\*) À défaut, le démasquage de l'antigène peut être effectué avec un tampon citrate pH 6,0.**

## Informations générales

RBP4 (retinol-binding protein 4) is a carrier protein that transports vitamin A (retinol) from the liver to the peripheral tissues. Synthesized primarily by hepatocytes and adipocytes as a 21 kDa non-glycosylated protein, RBP4 is secreted into the circulation as a retinol-RBP4 complex. In plasma the RBP4-retinol complex is bound to transthyretin (TRR), which prevents kidney filtration. Two truncated forms of RBP4, RBP4-L (truncated at Leu-183) and RBP4-LL (truncated at Leu-182 and Leu-183), exist by proteolytic process. RBP4-L and RBP4-LL, which do not bind TTR, are normally excreted into the urine but accumulate in the serum during renal failure. Urinary RBP4 has been reported as marker for glomerular disease. RBP4 also was identified as an adipokine that elevated in some INS-resistant states. Measurement of serum RBP4 could be used to assess the risk of INS resistance, type 2 diabetes, obesity, and cardiovascular disease. (18752671, 16034410)

## Publications notables

Autrice	Pubmed ID	Journal	Application
Makoto Hirano	27773703	Biochim Biophys Acta	WB,IF
Shyi-Jang Shin	33065162	Metabolism	WB,IHC
Na Sun	33102941	Bioact Mater	WB,IF

## Stockage

### Stockage:

Stocker à -20°C. Stable pendant un an après l'expédition.

### Tampon de stockage:

PBS avec azoture de sodium à 0,02 % et glycérol à 50 % pH 7,3

L'aliquotage n'est pas nécessaire pour le stockage à -20C

\*\*\* Les 20ul contiennent 0,1% de BSA.

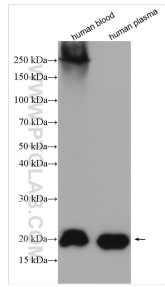
For technical support and original validation data for this product please contact:

T: 1 (888) 4PTGLAB (1-888-478-4522) (toll free in USA), or 1(312) 455-8498 (outside USA)

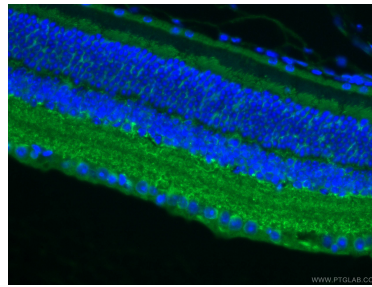
E: proteintech@ptglab.com  
W: ptglab.com

This product is exclusively available under Proteintech Group brand and is not available to purchase from any other manufacturer.

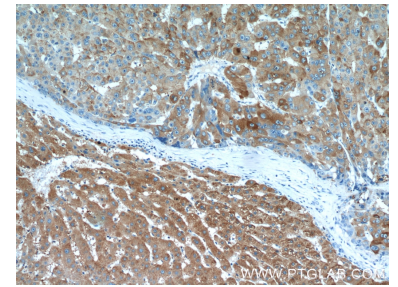
## Données de validation sélectionnées



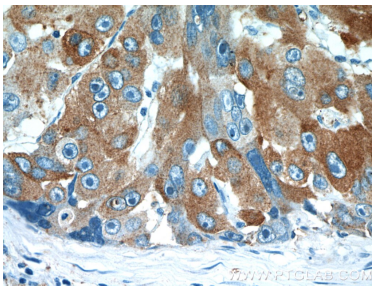
Various lysates were subjected to SDS PAGE followed by western blot with 11774-1-AP (RBP4 antibody) at dilution of 1:3000 incubated at room temperature for 1.5 hours.



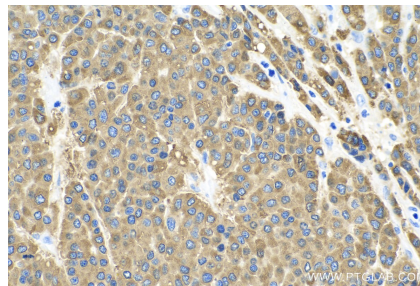
Immunofluorescent analysis of (4% PFA) fixed mouse eye tissue using RBP4 antibody (11774-1-AP) at dilution of 1:200 and CoraLite®488-Conjugated AffiniPure Goat Anti-Rabbit IgG(H+L).



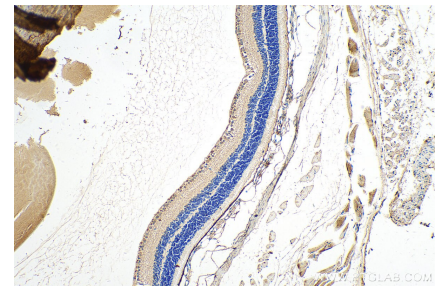
Immunohistochemical analysis of paraffin-embedded human liver cancer using 11774-1-AP (RBP4 antibody) at dilution of 1:50 (under 10x lens).



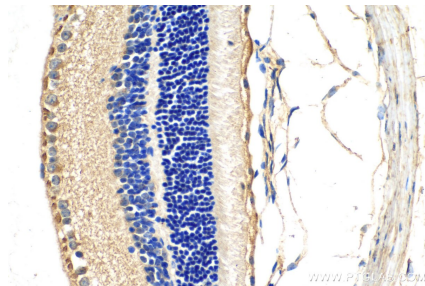
Immunohistochemical analysis of paraffin-embedded human liver cancer using 11774-1-AP (RBP4 antibody) at dilution of 1:50 (under 40x lens).



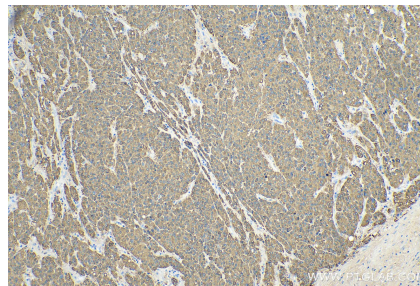
Immunohistochemical analysis of paraffin-embedded human liver cancer tissue slide using 11774-1-AP (RBP4 antibody) at dilution of 1:500 (under 40x lens). Heat mediated antigen retrieval with Tris-EDTA buffer (pH 9.0).



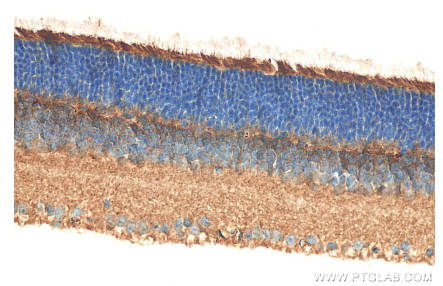
Immunohistochemical analysis of paraffin-embedded mouse eye tissue slide using 11774-1-AP (RBP4 antibody) at dilution of 1:500 (under 10x lens). Heat mediated antigen retrieval with Tris-EDTA buffer (pH 9.0).



Immunohistochemical analysis of paraffin-embedded mouse eye tissue slide using 11774-1-AP (RBP4 antibody) at dilution of 1:500 (under 40x lens). Heat mediated antigen retrieval with Tris-EDTA buffer (pH 9.0).



Immunohistochemical analysis of paraffin-embedded human liver cancer tissue slide using 11774-1-AP (RBP4 antibody) at dilution of 1:500 (under 10x lens). Heat mediated antigen retrieval with Tris-EDTA buffer (pH 9.0).



Immunohistochemical analysis of paraffin-embedded mouse eye tissue slide using 11774-1-AP (RBP4 antibody) at dilution of 1:500 (under 40x lens). Heat mediated antigen retrieval with Tris-EDTA buffer (pH 9.0).