

À des fins de recherche uniquement

Anticorps Polyclonal de lapin anti-NAMPT/PBEF



Numéro de catalogue: 11776-1-AP

Phare

30 Publications

Informations de base

Numéro de catalogue:

11776-1-AP

Taille:

150ul, Concentration: 900 µg/ml by Nanodrop;

Hôte:

Lapin

Isotype:

IgG

Immunogen Catalog Number:

AG2434

Numéro d'acquisition GenBank:

BC020691

Identification du gène (NCBI):

10135

Nom complet:

nicotinamide phosphoribosyltransferase

MW calculé

52 kDa

MW observés:

50-55 kDa

Méthode de purification:

Purification par affinité contre l'antigène

Dilutions recommandées:

WB 1:2000-1:10000

IP 0.5-4.0 µg for IP and 1:500-1:2000 for WB

IHC 1:50-1:500

IF 1:200-1:800

Applications

Applications testées:

IF, IHC, IP, WB, ELISA

Demandes citées:

IF, IHC, WB

Spécificité de l'espèce:

Humain, poisson-zèbre, rat, souris

Espèces citées:

Humain, poisson-zèbre, rat, souris

Remarque-IHC: il est suggéré de démasquer l'antigène avec un tampon de TE buffer pH 9,0; (*) À défaut, le démasquage de l'antigène peut être effectué avec un tampon citrate pH 6,0.

Contrôles positifs:

WB : tissu hépatique de rat, cellules HL-60, cellules Ramos, cellules RAW 264.7, tissu cardiaque de souris, tissu de muscle squelettique de souris, tissu hépatique de souris

IP : tissu cardiaque de souris,

IHC : tissu de lymphome humain,

IF : cellules HEK-293, cellules HeLa, cellules MG U-87

Informations générales

Nicotinamide phosphoribosyltransferase (NAMPT) has two usual synonyms termed Visfatin and PBEF. Its primary role is to catalyze the condensation of nicotinamide with 5-phosphoribosyl-1-pyrophosphate to yield nicotinamide mononucleotide, an intermediate in the biosynthesis of NAD, which is the rate limiting component in the mammalian NAD biosynthesis pathway. NAMPT is expressed in large amounts in bone marrow, liver tissue, and muscle tissues. NAMPT inhibits neutrophil apoptosis in experimental inflammation and clinical sepsis. NAMPT levels are altered in plasma of patients with type 2 diabetes mellitus (T2DM), and it is now evidenced that NAMPT may play a role in lipid metabolism.

Publications notables

Autrice	Pubmed ID	Journal	Application
Xinhui Liu	34603081	Front Physiol	WB
Anna E Gibson	32908120	Oncogenesis	WB
Xiaohan Jin	36243112	J Biol Chem	WB

Stockage

Stockage:

Stocker à -20°C. Stable pendant un an après l'expédition.

Tampon de stockage:

PBS avec azoture de sodium à 0,02 % et glycérol à 50 % pH 7,3

L'aliquotage n'est pas nécessaire pour le stockage à -20C

*** Les 20ul contiennent 0,1% de BSA.

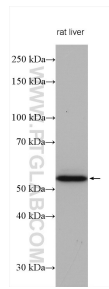
For technical support and original validation data for this product please contact:

T: 1 (888) 4PTGLAB (1-888-478-4522) (toll free in USA), or 1(312) 455-8498 (outside USA)

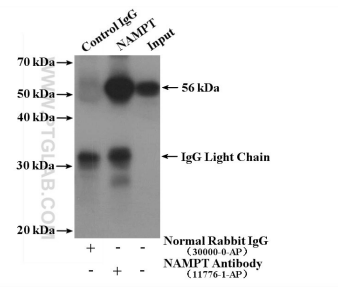
E: proteintech@ptglab.com
W: ptglab.com

This product is exclusively available under Proteintech Group brand and is not available to purchase from any other manufacturer.

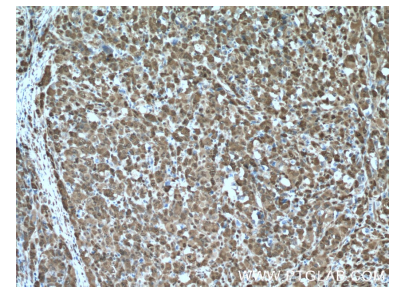
Données de validation sélectionnées



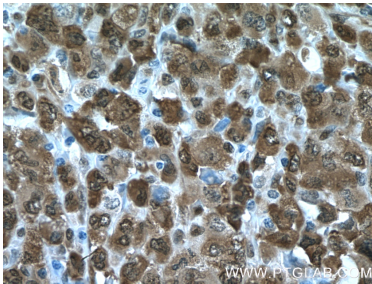
Rat liver lysates were subjected to SDS PAGE followed by western blot with 11776-1-AP (NAMPT/PBEF antibody) at dilution of 1:6000 incubated at room temperature for 1.5 hours.



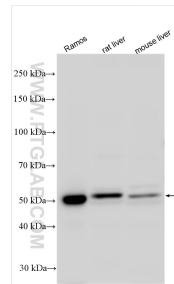
IP result of anti-NAMPT/PBEF (IP:11776-1-AP, 4 μ g; Detection:11776-1-AP 1:1000) with mouse heart tissue lysate 3720 μ g.



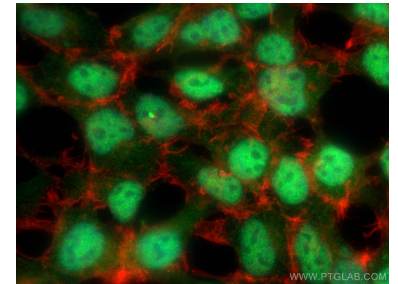
Immunohistochemical analysis of paraffin-embedded human lymphoma tissue slide using 11776-1-AP (NAMPT/PBEF antibody) at dilution of 1:200 (under 10x lens. Heat mediated antigen retrieval with Tris-EDTA buffer (pH 9.0).



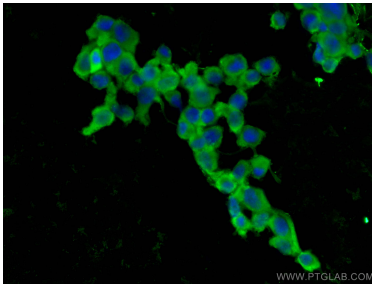
Immunohistochemical analysis of paraffin-embedded human lymphoma tissue slide using 11776-1-AP (NAMPT/PBEF antibody) at dilution of 1:200 (under 40x lens. Heat mediated antigen retrieval with Tris-EDTA buffer (pH 9.0).



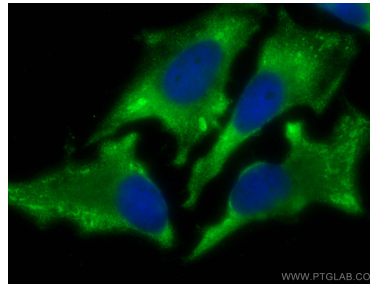
Ramos cells were subjected to SDS PAGE followed by western blot with 11776-1-AP (NAMPT/PBEF antibody) at dilution of 1:6000 incubated at room temperature for 1.5 hours.



Immunofluorescent analysis of (4% PFA) fixed HEK-293 cells using NAMPT/PBEF antibody (11776-1-AP) at dilution of 1:400 and Coralite@488-Conjugated AffiniPure Goat Anti-Rabbit IgG(H+L), CL594-phalloidin (red).



Immunofluorescent analysis of (-20°C Ethanol) fixed U-87 MG cells using NAMPT/PBEF antibody (11776-1-AP) at dilution of 1:400 and Coralite@488-Conjugated AffiniPure Goat Anti-Rabbit IgG(H+L).



Immunofluorescent analysis of (-20°C Ethanol) fixed HeLa cells using NAMPT/PBEF antibody (11776-1-AP) at dilution of 1:400 and Coralite@488-Conjugated AffiniPure Goat Anti-Rabbit IgG(H+L).