

À des fins de recherche uniquement

# Anticorps Polyclonal de lapin anti-POPDC3



Numéro de catalogue: 11800-1-AP

Phare

3 Publications

## Informations de base

Numéro de catalogue:  
11800-1-AP

Taille:  
150ul, Concentration: 850 µg/ml by  
Nanodrop and 520 µg/ml by Bradford  
method using BSA as the standard;

Hôte:  
Lapin

Isotype:  
IgG

Immunogen Catalog Number:  
AG2375

Numéro d'acquisition GenBank:  
BC022323

Identification du gène (NCBI):  
64208

Nom complet:  
popeye domain containing 3

MW calculé  
34 kDa

MW observés:  
60 kDa

Méthode de purification:  
Purification par affinité contre  
l'antigène

Dilutions recommandées:  
WB 1:500-1:2000  
IP 0.5-4.0 ug for IP and 1:500-1:2000  
for WB  
IHC 1:50-1:500

## Applications

Applications testées:  
IHC, IP, WB, ELISA

Demandes citées:  
IHC, WB

Spécificité de l'espèce:  
Humain, rat, souris

Espèces citées:  
Humain

**Remarque-IHC: il est suggéré de démasquer  
l'antigène avec un tampon de TE buffer pH  
9,0; (\*) A défaut, 'le démasquage de  
l'antigène peut être 'effectué avec un  
tampon citrate pH 6,0.**

Contrôles positifs:

WB : cellules COLO 320, cellules HEK-293

IP : cellules HeLa,

IHC : tissu cardiaque de souris, tissu de muscle  
squelettique humain, tissu placentaire humain, tissu  
pulmonaire humain, tissu splénique humain, tissu  
testiculaire humain

## Informations générales

The Popeye domain-containing (POPDC) gene family includes BVES/POPDC1, POPDC2 and POPDC3. POPDC proteins are highly evolutionarily conserved transmembrane proteins expressed in embryonic epithelium, heart and muscle. POPDC3 is a 291-amino acid protein containing three putative transmembrane domains. It has been reported that POPDC3 expression is reduced in gastric cancer, suggesting it might play an important role in the progression and metastases of gastric cancer. (PMID: 10882522; 20627872; 22654436)

## Publications notables

Autrice	Pubmed ID	Journal	Application
Yuying Wu	36713522	Front Oncol	IHC
Luo Deng D	22654436	World J Gastroenterol	IHC
Kim Mirang M	20627872	Carcinogenesis	WB,IHC

## Stockage

Stockage:

Stocker à -20°C. Stable pendant un an après l'expédition.

Tampon de stockage:

PBS avec azoture de sodium à 0,02 % et glycérol à 50 % pH 7,3

L'aliquotage n'est pas nécessaire pour le stockage à -20C

\*\*\* Les 20ul contiennent 0,1% de BSA.

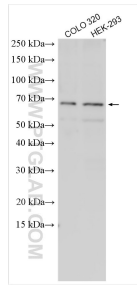
For technical support and original validation data for this product please contact:

T: 1 (888) 4PTGLAB (1-888-478-4522) (toll free  
in USA), or 1(312) 455-8498 (outside USA)

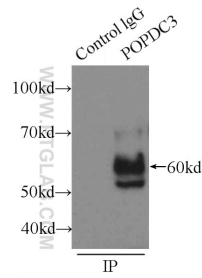
E: proteintech@ptglab.com  
W: ptglab.com

This product is exclusively available under Proteintech Group brand and is not available to purchase from any other manufacturer.

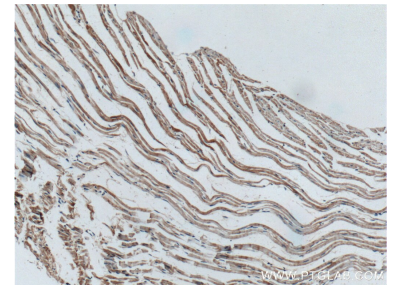
## Données de validation sélectionnées



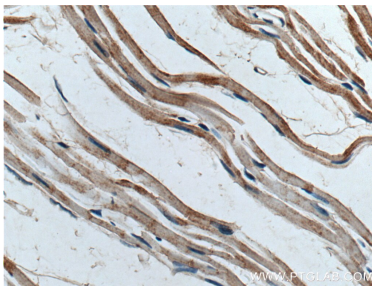
Various lysates were subjected to SDS PAGE followed by western blot with 11800-1-AP (POPDC3 antibody) at dilution of 1:1000 incubated at room temperature for 1.5 hours.



IP Result of anti-POPDC3 (IP:11800-1-AP, 3ug; Detection:11800-1-AP 1:1000) with HeLa cells lysate 220ug.



Immunohistochemical analysis of paraffin-embedded mouse heart tissue slide using 11800-1-AP (POPDC3 antibody) at dilution of 1:50 (under 10x lens. Heat mediated antigen retrieval with Tris-EDTA buffer (pH 9.0).



Immunohistochemical analysis of paraffin-embedded mouse heart tissue slide using 11800-1-AP (POPDC3 antibody) at dilution of 1:50 (under 40x lens. Heat mediated antigen retrieval with Tris-EDTA buffer (pH 9.0).