

À des fins de recherche uniquement

Anticorps Polyclonal de lapin anti-S100P



Numéro de catalogue: 11803-1-AP

6 Publications

Informations de base

Numéro de catalogue:
11803-1-AP

Taille:
150ul, Concentration: 1500 µg/ml by Nanodrop and 580 µg/ml by Bradford method using BSA as the standard;

Hôte:
Lapin

Isotype:
IgG

Immunogen Catalog Number:
AG2379

Numéro d'acquisition GenBank:
BC006819

Identification du gène (NCBI):
6286
Nom complet:
S100 calcium binding protein P

MW calculé
95 aa, 11 kDa

MW observés:
10 kDa

Méthode de purification:
Purification par affinité contre l'antigène

Dilutions recommandées:
WB 1:500-1:2000
IHC 1:4000-1:16000
IF 1:20-1:200

Applications

Applications testées:
FC, IF, IHC, WB, ELISA

Demandes citées:
IHC, WB

Spécificité de l'espèce:
Humain

Espèces citées:
Humain

Remarque-IHC: il est suggéré de démasquer l'antigène avec un tampon de TE buffer pH 9,0; (*) À défaut, 'le démasquage de l'antigène peut être effectué avec un tampon citrate pH 6,0.

Contrôles positifs:

WB : cellules HeLa,

IHC : tissu de cancer du pancréas humain, tissu de cancer du côlon humain, tissu de cancer du poumon humain, tissu de carcinome urothélial humain

IF : cellules HeLa, cellules HepG2

Informations générales

S100P protein is a relatively small (95 amino acid) isoform of the S100 protein family that was first isolated from human placenta. Overexpression of S100P has been detected in several cancers such as breast, colon, prostate, pancreatic and lung carcinomas, and the protein has been functionally implicated in carcinogenic processes. S100P protein is widely expressed in both normal and neoplastic tissues. It clearly shows ectopic expression in some cancers. Based on the high expression in certain tumors, S100P could represent a potential target for novel diagnostic and therapeutic applications.

Publications notables

Autrice	Pubmed ID	Journal	Application
Chengyu Wang	33767765	Exp Ther Med	WB
F Lam Francis F	21137016	Proteomics Clin Appl	IHC
Xiangyu Wang	26396916	Am J Cancer Res	WB, IHC

Stockage

Stockage:

Stocker à -20°C. Stable pendant un an après l'expédition.

Tampon de stockage:

PBS avec azoture de sodium à 0,02 % et glycérol à 50 % pH 7,3

L'aliquotage n'est pas nécessaire pour le stockage à -20C

*** Les 20ul contiennent 0,1% de BSA.

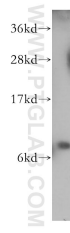
For technical support and original validation data for this product please contact:

T: 1 (888) 4PTGLAB (1-888-478-4522) (toll free in USA), or 1(312) 455-8498 (outside USA)

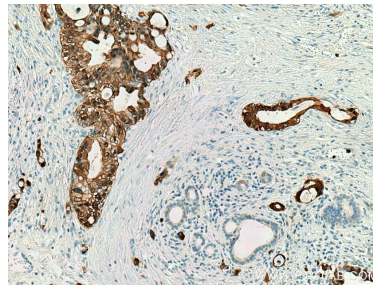
E: proteintech@ptglab.com
W: ptglab.com

This product is exclusively available under Proteintech Group brand and is not available to purchase from any other manufacturer.

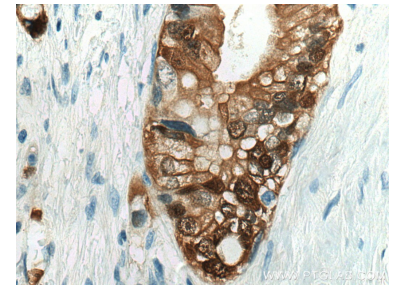
Données de validation sélectionnées



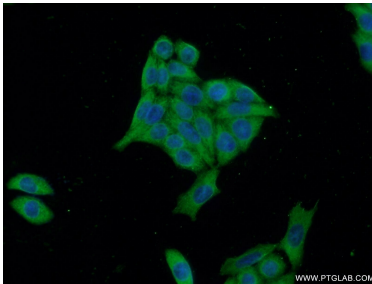
HeLa cells were subjected to SDS PAGE followed by western blot with 11803-1-AP (S100P antibody) at dilution of 1:1000 incubated at room temperature for 1.5 hours.



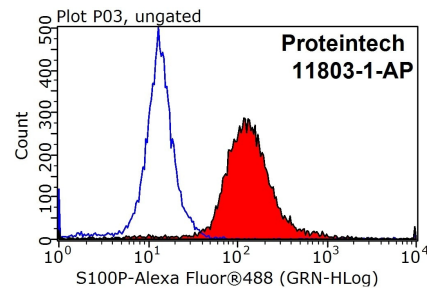
Immunohistochemical analysis of paraffin-embedded human pancreas cancer tissue slide using 11803-1-AP (S100P antibody) at dilution of 1:8000 (under 10x lens). Heat mediated antigen retrieval with Tris-EDTA buffer (pH 9.0).



Immunohistochemical analysis of paraffin-embedded human pancreas cancer tissue slide using 11803-1-AP (S100P antibody) at dilution of 1:8000 (under 40x lens). Heat mediated antigen retrieval with Tris-EDTA buffer (pH 9.0).



Immunofluorescent analysis of HeLa cells using 11803-1-AP (S100P antibody) at dilution of 1:50 and Alexa Fluor 488-conjugated AffiniPure Goat Anti-Rabbit IgG(H+L).



1×10^6 HepG2 cells were stained with 0.2 μ g S100P antibody (11803-1-AP, red) and control antibody (blue). Fixed with 90% MeOH blocked with 3% BSA (30 min). Alexa Fluor 488-conjugated AffiniPure Goat Anti-Rabbit IgG(H+L) with dilution 1:1000.