

À des fins de recherche uniquement

Anticorps Polyclonal de lapin anti-CILP2



Numéro de catalogue: 11813-1-AP

1 Publications

Informations de base

Numéro de catalogue: 11813-1-AP	Numéro d'acquisition GenBank: BC034926	Méthode de purification: Purification par affinité contre l'antigène
Taille: 150ul , Concentration: 350 µg/ml by Nanodrop and 247 µg/ml by Bradford method using BSA as the standard;	Identification du gène (NCBI): 148113	Dilutions recommandées: WB 1:200-1:1000 IF 1:20-1:200
Hôte: Lapin	Nom complet: cartilage intermediate layer protein 2	
Isotype: IgG	MW calculé: 126 kDa	
Immunogen Catalog Number: AG2366	MW observés: 90 kDa	

Applications

Applications testées: IF, WB, ELISA	Contrôles positifs: WB : cellules K-562, cellules HEK-293, tissu cérébral de souris IF : cellules HEK-293,
Demandes citées: WB	
Spécificité de l'espèce: Humain, souris	
Espèces citées: souris	

Informations générales

CILP2, also named as Cartilage intermediate layer protein 2, is a 1156 amino acid protein, which is expressed in articular chondrocytes but not in knee meniscal cartilage cells. CILP2 localizes to the intermediate to deep zone of articular cartilage. CILP2 may play a role in cartilage scaffolding. Given the full-length molecular mass of CILP2 is 125 kDa, but the most CILP2 protein in articular cartilage is cleaved, mostly likely at the furin cleavage site. CILP2 protein is detected as a major band on SDS-page migrating at about 90 kDa. (PMID: 21880736)

Publications notables

Autrice	Pubmed ID	Journal	Application
Mengtian Zhang	36103829	Cell Rep	WB

Stockage

Stockage:
Stocker à -20°C. Stable pendant un an après l'expédition.
Tampon de stockage:
PBS avec azoture de sodium à 0,02 % et glycérol à 50 % pH 7,3
L'aliquotage n'est pas nécessaire pour le stockage à -20C

*** Les 20ul contiennent 0,1% de BSA.

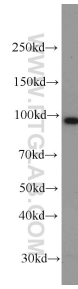
For technical support and original validation data for this product please contact:

T: 1 (888) 4PTGLAB (1-888-478-4522) (toll free in USA), or 1(312) 455-8498 (outside USA)

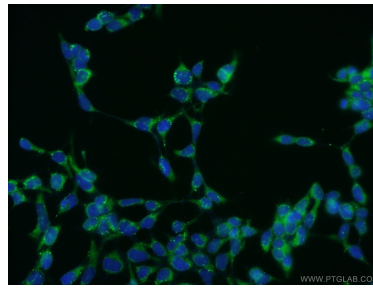
E: proteintech@ptglab.com
W: ptglab.com

This product is exclusively available under Proteintech Group brand and is not available to purchase from any other manufacturer.

Données de validation sélectionnées



K-562 cells were subjected to SDS PAGE followed by western blot with 11813-1-AP (CILP2 antibody) at dilution of 1:300 incubated at room temperature for 1.5 hours.



Immunofluorescent analysis of HEK-293 cells using 11813-1-AP (CILP2 antibody) at dilution of 1:50 and Alexa Fluor 488-conjugated AffiniPure Goat Anti-Rabbit IgG(H+L).