

À des fins de recherche uniquement

Anticorps Polyclonal de lapin anti-RFC3



Numéro de catalogue: 11814-1-AP

Phare

3 Publications

Informations de base

Numéro de catalogue:

11814-1-AP

Numéro d'acquisition GenBank:

BC000149

Méthode de purification:

Purification par affinité contre l'antigène

Taille:

150ul, Concentration: 260 µg/ml by Nanodrop and 233 µg/ml by Bradford method using BSA as the standard;

Identification du gène (NCBI):

5983

Dilutions recommandées:

WB 1:500-1:3000
IP 0.5-4.0 ug for IP and 1:200-1:1000 for WB
IF 1:50-1:500

Hôte:

Lapin

Nom complet:

replication factor C (activator 1) 3, 38kDa

MW calculé

40 aa, 6 kDa

MW observés:

38 kDa

Immunogen Catalog Number:

AG2269

Applications

Applications testées:

IF, IP, WB, ELISA

Demandes citées:

WB

Spécificité de l'espèce:

Humain, rat, souris

Espèces citées:

Humain, souris

Contrôles positifs:

WB : tissu hépatique humain, cellules HeLa, tissu cardiaque humain

IP : cellules HeLa,

IF : cellules HepG2,

Informations générales

RFC3, also known as RFC38, is a 356 amino acid protein, which localizes in nucleus. Replication factor C (RFC) is a component of the eukaryotic DNA polymerase. In all eukaryotic cell cycles, it is essential for DNA duplication, DNA injury repair and checkpoint control. RFC consists of five subunits (RFC1-5). The interrelationships between RFC2, RFC3 and the c-MYC oncogene (transcription factor) can induce cell division and proliferation. RFC3 is associated with liver, breast, esophageal and ovarian cancer, and serves a critical role in cellular proliferation, invasion and metastasis. RFC3 exists two isoforms with molecular weight of 34 kDa and 38-40 kDa.

Publications notables

Autrice	Pubmed ID	Journal	Application
Jianguo Yang	33691114	Cell Rep	WB
Kai Ren	34930359	Viol J	WB
Stephen Gray	32640224	Cell Rep	WB

Stockage

Stockage:

Stocker à -20°C. Stable pendant un an après l'expédition.

Tampon de stockage:

PBS avec azoture de sodium à 0,02 % et glycérol à 50 % pH 7,3

L'aliquotage n'est pas nécessaire pour le stockage à -20C

*** Les 20ul contiennent 0,1% de BSA.

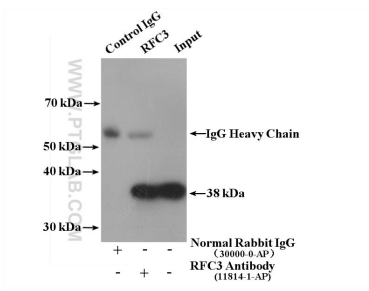
For technical support and original validation data for this product please contact:

T: 1 (888) 4PTGLAB (1-888-478-4522) (toll free in USA), or 1(312) 455-8498 (outside USA)

E: proteintech@ptglab.com
W: ptglab.com

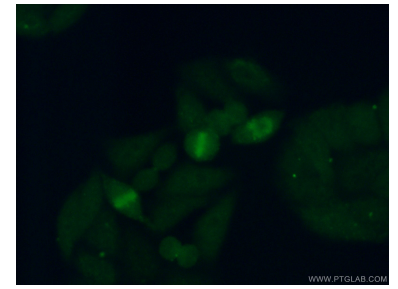
This product is exclusively available under Proteintech Group brand and is not available to purchase from any other manufacturer.

Données de validation sélectionnées



HeLa cells were subjected to SDS PAGE followed by western blot with 11814-1-AP (RFC3 antibody) at dilution of 1:300.

human liver tissue were subjected to SDS PAGE followed by western blot with 11814-1-AP (RFC3 antibody) at dilution of 1:500 incubated at room temperature for 1.5 hours.



Immunofluorescent analysis of (10% Formaldehyde) fixed HepG2 cells using 11814-1-AP (RFC3 antibody) at dilution of 1:50 and Alexa Fluor 488-conjugated AffiniPure Goat Anti-Rabbit IgG(H+L).