

À des fins de recherche uniquement

Anticorps Polyclonal de lapin anti-PILRA



Numéro de catalogue: 11818-1-AP

Informations de base

Numéro de catalogue: 11818-1-AP	Numéro d'acquisition GenBank: BC017812	Méthode de purification: Purification par affinité contre l'antigène
Taille: 150ul , Concentration: 300 µg/ml by Nanodrop and 180 µg/ml by Bradford method using BSA as the standard;	Identification du gène (NCBI): 29992	Dilutions recommandées: WB 1:150-1:600
Hôte: Lapin	Nom complet: paired immunoglobulin-like type 2 receptor alpha	
Isotype: IgG	MW calculé: 303 aa, 34 kDa	
Immunogen Catalog Number: AG2385	MW observés: 48 kDa, 61 kDa	

Applications

Applications testées: WB,ELISA	Contrôles positifs: WB : tissu placentaire humain,
Spécificité de l'espèce: Humain	

Informations générales

Paired receptors consist of highly related activating and inhibitory receptors and are widely involved in the regulation of the immune system. Paired immunoglobulin-like type 2 receptor alpha (PILRa) and PILRβ are paired receptors bearing highly similar extracellular ligand-binding domains but divergent intracellular signaling domains. PILRa is the immune inhibitory receptor possessing an immunoreceptor tyrosine-based inhibitory motif (ITIM) in its cytoplasmic domain enabling it to deliver inhibitory signals. Binding of PILRa to its ligand CD99 is involved in immune regulation. PILRa can also recognize other ligands, PILR-associating neural protein (PANP), and HSV-1 glycoprotein B (HSV-1 gB). PILRa has a calculated molecular weight of 34 kDa. It has been reported that PILRa migrates at 44-50 kDa due to glycosylation (PMID: 10903717; 10660620). The other band of about 61 kDa detected by this antibody may present a heavily glycosylated form of PILRa.

Stockage

Stockage:
Stocker à -20°C. Stable pendant un an après l'expédition.
Tampon de stockage:
PBS avec azoture de sodium à 0,02 % et glycérol à 50 % pH 7,3
L'aliquotage n'est pas nécessaire pour le stockage à -20C

*** Les 20ul contiennent 0,1% de BSA.

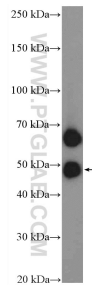
For technical support and original validation data for this product please contact:

T: 1 (888) 4PTGLAB (1-888-478-4522) (toll free in USA), or 1(312) 455-8498 (outside USA)

E: proteintech@ptglab.com
W: ptglab.com

This product is exclusively available under Proteintech Group brand and is not available to purchase from any other manufacturer.

Données de validation sélectionnées



human placenta tissue were subjected to SDS PAGE followed by western blot with 11818-1-AP (PILRA antibody) at dilution of 1:300 incubated at room temperature for 1.5 hours.