

À des fins de recherche uniquement

Anticorps Polyclonal de lapin anti-EMCN



Numéro de catalogue: 11828-1-AP

Informations de base

Numéro de catalogue:
11828-1-AP

Taille:
150ul, Concentration: 400 µg/ml by
Nanodrop and 267 µg/ml by Bradford
method using BSA as the standard;

Hôte:
Lapin

Isotype:
IgG

Immunogen Catalog Number:
AG2396

Numéro d'acquisition GenBank:
BC017781

Identification du gène (NCBI):
51705

Nom complet:
endomucin

MW calculé
19 kDa, 27 kDa

MW observés:
85 kDa

Méthode de purification:
Purification par affinité contre
l'antigène

Dilutions recommandées:
WB 1:500-1:2000

Applications

Applications testées:
WB, ELISA

Spécificité de l'espèce:
Humain, souris

Contrôles positifs:

WB : tissu cardiaque de souris, tissu pulmonaire de
souris, tissu rénal de souris

Informations générales

Endomucin (EMCN), also known as Endomucin 2 or Mucin 14, is a type I integral membrane glycoprotein that is endothelial-specific. EMCN is expressed on the surface of capillaries and venous and is highly expressed in highly vascularized tissues such as heart, kidney and lung (PMID: 29215001). Endomucin plays an important role in cell interaction, molecular cell signaling, angiogenesis and cell migration (PMID: 33532708). Since it is glycosylated, the apparent molecular weight of EMCN could be variable, ranging from 80 kDa to 120 kDa.

Stockage

Stockage:

Stocker à -20°C. Stable pendant un an après l'expédition.

Tampon de stockage:

PBS avec azoture de sodium à 0,02 % et glycérol à 50 % pH 7,3

L'aliquotage n'est pas nécessaire pour le stockage à -20C

*** Les 20ul contiennent 0,1% de BSA.

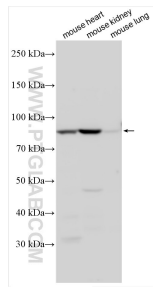
For technical support and original validation data for this product please contact:

T: 1 (888) 4PTGLAB (1-888-478-4522) (toll free
in USA), or 1(312) 455-8498 (outside USA)

E: proteintech@ptglab.com
W: ptglab.com

This product is exclusively available under Proteintech Group brand and is not available to purchase from any other manufacturer.

Données de validation sélectionnées



Various lysates were subjected to SDS PAGE followed by western blot with 11828-1-AP (EMCN antibody) at dilution of 1:1000 incubated at room temperature for 1.5 hours.