

À des fins de recherche uniquement

Anticorps Polyclonal de lapin anti-CBX5



Numéro de catalogue: 11831-1-AP

Phare

6 Publications

Informations de base

Numéro de catalogue:
11831-1-AP

Taille:
150ul, Concentration: 900 µg/ml by Nanodrop and 433 µg/ml by Bradford method using BSA as the standard;

Hôte:
Lapin

Isotype:
IgG

Immunogen Catalog Number:
AG2403

Numéro d'acquisition GenBank:
BC006821

Identification du gène (NCBI):
23468

Nom complet:
chromobox homolog 5 (HP1 alpha homolog, Drosophila)

MW calculé
191 aa, 22 kDa

MW observés:
25-30 kDa

Méthode de purification:
Purification par affinité contre l'antigène

Dilutions recommandées:
WB 1:500-1:1000
IP 0.5-4.0 ug for IP and 1:500-1:1000 for WB
IHC 1:50-1:500

Applications

Applications testées:
IHC, IP, WB, ELISA

Demandes citées:
ChIP, IP, WB

Spécificité de l'espèce:
Humain, rat, souris

Espèces citées:
Humain, souris

Remarque-IHC: il est suggéré de démasquer l'antigène avec un tampon de TE buffer pH 9.0; (*) A défaut, 'le démasquage de l'antigène peut être effectué avec un tampon citrate pH 6,0.

Contrôles positifs:

WB : cellules HeLa, cellules A431, cellules HEK-293, cellules K-562, cellules MCF-7, tissu rénal humain

IP : cellules HEK-293,

IHC : tissu de cancer du poumon humain,

Informations générales

Chromobox protein homolog 5 (CBX5), also named heterochromatin protein 1 alpha (HP1a), is a highly conserved nonhistone protein involved in heterochromatin formation and gene silencing in different species including humans. HP1a is a Component of heterochromatin that recognizes and binds histone H3 tails methylated at 'Lys-9' (H3K9me), leading to epigenetic repression. In contrast, it is excluded from chromatin when 'Tyr-41' of histone H3 is phosphorylated (H3Y41ph). It may interact with Lamin-Breceptor. HP1a is involved in the formation of functional kinetochore through interaction with MIS12 complex proteins. Phosphorylation of HP1 and LBR during interphase mitosis may be responsible for some of the alterations in chromatin organization and nuclear structure which occur at various times during the cell cycle. The HP1a was expressed in nucleus and associates specifically with chromatin during metaphase and anaphase. Recent studies have shown that HP1a is present at many euchromatic sites and positively regulates euchromatic gene expression through RNA transcript association and interaction with hnRNPs in Drosophila (19798443). This antibody is a rabbit polyclonal antibody raised against a full-length human HP1A protein, and can react with the 28kd HP1A protein.

Publications notables

Autrice	Pubmed ID	Journal	Application
Ousman Tamgue	28952292	Asian Pac J Cancer Prev	WB
Guang Yang	28361889	Nat Commun	WB
Ruyi Fan	36629433	Microbiol Spectr	WB

Stockage

Stockage:

Stocker à -20°C. Stable pendant un an après l'expédition.

Tampon de stockage:

PBS avec azoture de sodium à 0,02 % et glycérol à 50 % pH 7,3

L'aliquotage n'est pas nécessaire pour le stockage à -20C

*** Les 20ul contiennent 0,1% de BSA.

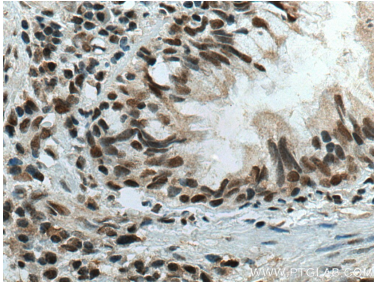
For technical support and original validation data for this product please contact:

T: 1 (888) 4PTGLAB (1-888-478-4522) (toll free in USA), or 1(312) 455-8498 (outside USA)

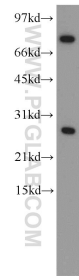
E: proteintech@ptglab.com
W: ptglab.com

This product is exclusively available under Proteintech Group brand and is not available to purchase from any other manufacturer.

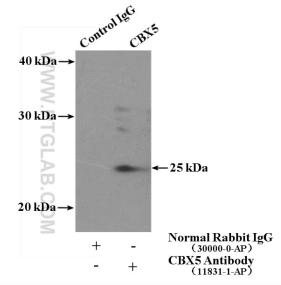
Données de validation sélectionnées



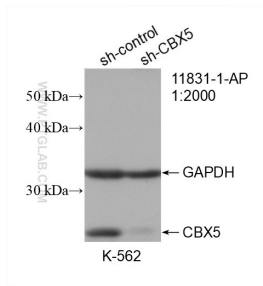
Immunohistochemical analysis of paraffin-embedded human lung cancer tissue slide using 11831-1-AP (CBX5 antibody) at dilution of 1:200 (under 40x lens). Heat mediated antigen retrieval with Tris-EDTA buffer (pH 9.0).



HeLa cells were subjected to SDS PAGE followed by western blot with 11831-1-AP (CBX5 antibody) at dilution of 1:500 incubated at room temperature for 1.5 hours.



IP Result of anti-CBX5 (IP:11831-1-AP, 4ug; Detection:11831-1-AP 1:500) with HEK-293 cells lysate 1120ug.



WB result of CBX5 antibody (11831-1-AP; 1:2000; incubated at room temperature for 1.5 hours) with sh-Control and sh-CBX5 transfected K-562 cells.