

À des fins de recherche uniquement

Anticorps Polyclonal de lapin anti- OLR1



Numéro de catalogue: 11837-1-AP

Phare

34 Publications

Informations de base

Numéro de catalogue:
11837-1-AP

Taille:
150ul , Concentration: 900 µg/ml by
Nanodrop and 460 µg/ml by Bradford
method using BSA as the standard;

Hôte:
Lapin

Isotype:
IgG

Immunogen Catalog Number:
AG2437

Numéro d'acquisition GenBank:
BC022295

Identification du gène (NCBI):
4973

Nom complet:
oxidized low density lipoprotein
(lectin-like) receptor 1

MW calculé
273 aa, 31 kDa

MW observés:
50-55 kDa

Méthode de purification:
Purification par affinité contre
l'antigène

Dilutions recommandées:
WB 1:1000-1:6000
IP 0.5-4.0 ug for IP and 1:500-1:1000
for WB
IHC 1:50-1:500

Applications

Applications testées:
FC, IHC, IP, WB, ELISA

Demandes citées:
CoIP, IF, IHC, WB

Spécificité de l'espèce:
Humain, souris

Espèces citées:
Humain, souris

**Remarque-IHC: il est suggéré de démasquer
l'antigène avec un tampon de TE buffer pH
9,0; (*) A défaut, 'le démasquage de
l'antigène peut être 'effectué avec un
tampon citrate pH 6,0.**

Contrôles positifs:

WB : cellules bEnd.3, tissu hépatique humain

IP : cellules LO2,

IHC : tissu cardiaque humain,

Informations générales

OLR1/LOX-1 acts as a receptor, in the form of homodimer, that mediates the recognition, internalization, and degradation of oxidatively modified low density lipoprotein (oxLDL) (PMID: 9052782, 15695803). OLR1 is predominantly expressed in endothelial cells and vascular-rich organs such as the placenta, lung, liver, and brain (PMID: 9828121). OLR1 is a protein containing 273 amino acids with a calculated molecular mass of 31 kDa but an apparent molecular mass of 50 kDa, which may result from the glycosylation of four potential N-linked glycosylation sites located at the C-terminal domain (PMID: 9052782).

Publications notables

Autrice	Pubmed ID	Journal	Application
Meng Zhang	28961281	PLoS One	WB,IHC
Ivan Cokic	36302906	Nat Commun	WB
Qian Zhang	31655342	Int Immunopharmacol	WB

Stockage

Stockage:

Stocker à -20°C. Stable pendant un an après l'expédition.

Tampon de stockage:

PBS avec azoture de sodium à 0,02 % et glycérol à 50 % pH 7,3

L'aliquotage n'est pas nécessaire pour le stockage à -20C

*** Les 20ul contiennent 0,1% de BSA.

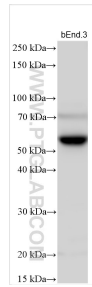
For technical support and original validation data for this product please contact:

T: 1 (888) 4PTGLAB (1-888-478-4522) (toll free
in USA), or 1(312) 455-8498 (outside USA)

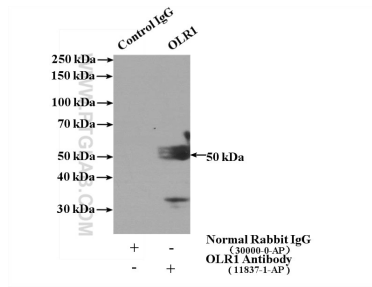
E: proteintech@ptglab.com
W: ptglab.com

This product is exclusively available under Proteintech Group brand and is not available to purchase from any other manufacturer.

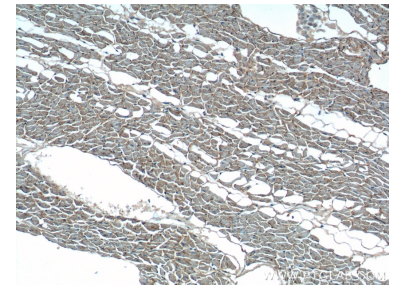
Données de validation sélectionnées



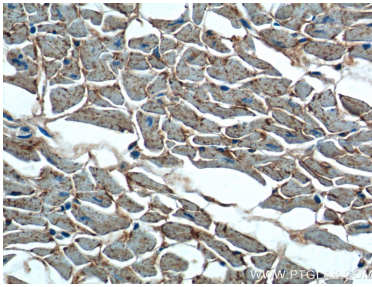
bEnd.3 cells were subjected to SDS PAGE followed by western blot with 11837-1-AP (OLR1 antibody) at dilution of 1:3000 incubated at room temperature for 1.5 hours.



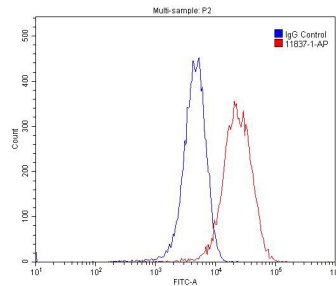
IP Result of anti-OLR1 (IP:11837-1-AP, 4ug; Detection:11837-1-AP 1:800) with L02 cells lysate 1800ug.



Immunohistochemical analysis of paraffin-embedded human heart tissue slide using 11837-1-AP (OLR1 Antibody) at dilution of 1:200 (under 10x lens).



Immunohistochemical analysis of paraffin-embedded human heart tissue slide using 11837-1-AP (OLR1 Antibody) at dilution of 1:200 (under 40x lens).



1x10⁶ HUVEC cells were stained with 0.2ug OLR1 antibody (11837-1-AP, red) and control antibody (blue). Fixed with 4% PFA blocked with 3% BSA (30 min). Alexa Fluor 488-conjugated AffiniPure Goat Anti-Rabbit IgG(H+L) with dilution 1:1500.