

À des fins de recherche uniquement

Anticorps Polyclonal de lapin anti-SRPX2



Numéro de catalogue: 11845-1-AP

Phare

6 Publications

Informations de base

Numéro de catalogue: 11845-1-AP	Numéro d'acquisition GenBank: BC020733	Méthode de purification: Purification par affinité contre l'antigène
Taille: 150ul , Concentration: 300 µg/ml by Nanodrop and 140 µg/ml by Bradford method using BSA as the standard;	Identification du gène (NCBI): 27286	Dilutions recommandées: WB 1:500-1:2000 IHC 1:20-1:200 IF 1:200-1:800
Hôte: Lapin	Nom complet: sushi-repeat-containing protein, X-linked 2	
Isotype: IgG	MW calculé 465 aa, 53 kDa	
Immunogen Catalog Number: AG2516	MW observés: 53 kDa	

Applications

Applications testées:

IF, IHC, WB, ELISA

Demandes citées:

IHC, WB

Spécificité de l'espèce:

Humain, rat, souris

Espèces citées:

Humain, souris

Remarque-IHC: il est suggéré de démasquer l'antigène avec un tampon de TE buffer pH 9,0; (*) A défaut, 'le démasquage de l'antigène peut être 'effectué avec un tampon citrate pH 6,0.

Contrôles positifs:

WB : tissu placentaire humain, cellules HepG2, tissu cérébral humain, tissu rénal humain

IHC : tissu placentaire humain, tissu cardiaque humain, tissu cérébral humain, tissu cutané humain, tissu pulmonaire humain, tissu rénal humain, tissu splénique humain

IF : tissu cérébral de rat,

Informations générales

SRPX2 (sushi-repeat-containing protein, X-linked 2) is a secreted protein expressed in neurons of the human adult brain, including the rolandic area (PMID: 20874700). Firstly described as sushi-repeat protein up-regulated in leukemia (SPRUL) in leukemia cells with dysregulated expression at the transcriptional level, SRPX2 has been recently shown as a multifunctional protein. SRPX2 is a ligand for uPAR, the urokinase-type plasminogen activator (uPA) receptor (PMID: 18718938). It is involved in seizure disorders, angiogenesis and cellular adhesion (PMID: 22242148; 19667118; 16497722). The involvement of SRPX2 in disorders of language cortex and cognition suggests it has an important role in the perisylvian region critical for language development (PMID: 16497722).

Publications notables

Autrice	Pubmed ID	Journal	Application
Jeannie Hwang	31505809	Int J Mol Sci	WB
Sitong Zhou	34660598	Front Cell Dev Biol	IHC
Zhenyuan Gao	26191169	Int J Clin Exp Pathol	WB, IHC

Stockage

Stockage:

Stocker à -20°C. Stable pendant un an après l'expédition.

Tampon de stockage:

PBS avec azoture de sodium à 0,02 % et glycérol à 50 % pH 7,3

L'aliquotage n'est pas nécessaire pour le stockage à -20C

*** Les 20ul contiennent 0,1% de BSA.

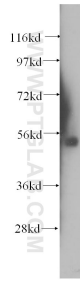
For technical support and original validation data for this product please contact:

T: 1 (888) 4PTGLAB (1-888-478-4522) (toll free in USA), or 1(312) 455-8498 (outside USA)

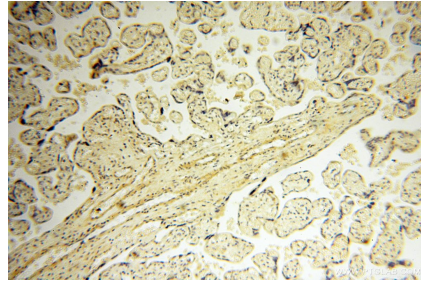
E: proteintech@ptglab.com
W: ptglab.com

This product is exclusively available under Proteintech Group brand and is not available to purchase from any other manufacturer.

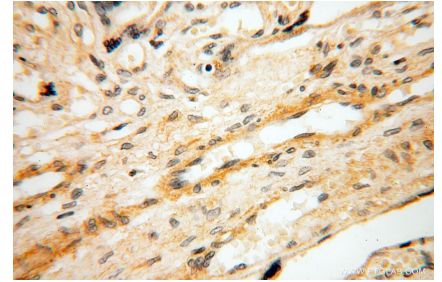
Données de validation sélectionnées



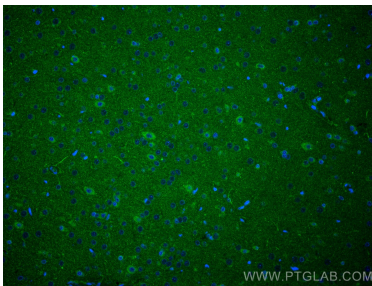
human placenta tissue were subjected to SDS PAGE followed by western blot with 11845-1-AP (SRPX2 antibody) at dilution of 1:500 incubated at room temperature for 1.5 hours.



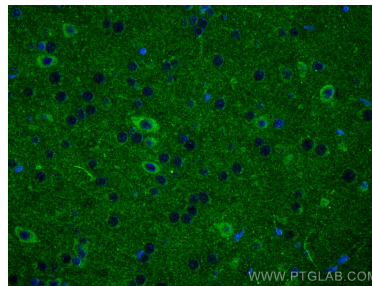
Immunohistochemical analysis of paraffin-embedded human placenta using 11845-1-AP (SRPX2 antibody) at dilution of 1:100 (under 10x lens).



Immunohistochemical analysis of paraffin-embedded human placenta using 11845-1-AP (SRPX2 antibody) at dilution of 1:100 (under 40x lens).



Immunofluorescent analysis of (4% PFA) fixed rat brain tissue using SRPX2 antibody (11845-1-AP) at dilution of 1:400 and CoraLite®488-Conjugated AffiniPure Goat Anti-Rabbit IgG(H+L).



Immunofluorescent analysis of (4% PFA) fixed rat brain tissue using SRPX2 antibody (11845-1-AP) at dilution of 1:400 and CoraLite®488-Conjugated AffiniPure Goat Anti-Rabbit IgG(H+L).