

À des fins de recherche uniquement

# Anticorps Polyclonal de lapin anti-Caspase 4/p20/p10



Numéro de catalogue: 11856-1-AP

Phare

12 Publications

## Informations de base

Numéro de catalogue: 11856-1-AP	Numéro d'acquisition GenBank: BC017839	Méthode de purification: Purification par affinité contre l'antigène
Taille: 150ul , Concentration: 900 µg/ml by Nanodrop and 450 µg/ml by Bradford method using BSA as the standard;	Identification du gène (NCBI): 837	Dilutions recommandées: WB 1:500-1:1000 IHC 1:20-1:200 IF 1:50-1:500
Hôte: Lapin	Nom complet: caspase 4, apoptosis-related cysteine peptidase	
Isotype: IgG	MW calculé 377 aa, 43 kDa	
Immunogen Catalog Number: AG2429	MW observés: 43-48 kDa	

## Applications

### Applications testées:

IF, IHC, WB, ELISA

### Demandes citées:

IHC, WB

### Spécificité de l'espèce:

Humain

### Espèces citées:

Humain, rat

**Remarque-IHC: il est suggéré de démasquer l'antigène avec un tampon de TE buffer pH 9,0; (\*) A défaut, 'le démasquage de l'antigène peut être 'effectué avec un tampon citrate pH 6,0.**

### Contrôles positifs:

WB : cellules SGC-7901, cellules THP-1

IHC : tissu de cancer du pancréas humain,

IF : cellules HepG2,

## Informations générales

Caspase 4 (CASP4), is a member of the cysteine-aspartic acid protease (caspase) family. Sequential activation of caspases plays a central role in the execution-phase of cell apoptosis. Caspase 4 is able to cleave and activate its own precursor protein, as well as caspase 1 precursor. Overexpression of caspase 4 will induce cell apoptosis.

## Publications notables

Autrice	Pubmed ID	Journal	Application
Liangmin Fu	36248876	Front Immunol	IHC,WB
Xiao-Lei Xin	31542790	Med Sci Monit	WB
Qingshan Ji	33118609	Inflammation	WB

## Stockage

### Stockage:

Stocker à -20°C. Stable pendant un an après l'expédition.

### Tampon de stockage:

PBS avec azoture de sodium à 0,02 % et glycérol à 50 % pH 7,3

L'aliquotage n'est pas nécessaire pour le stockage à -20C

\*\*\* Les 20ul contiennent 0,1% de BSA.

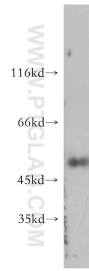
For technical support and original validation data for this product please contact:

T: 1 (888) 4PTGLAB (1-888-478-4522) (toll free in USA), or 1(312) 455-8498 (outside USA)

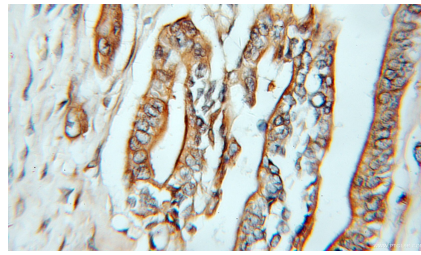
E: proteintech@ptglab.com  
W: ptglab.com

This product is exclusively available under Proteintech Group brand and is not available to purchase from any other manufacturer.

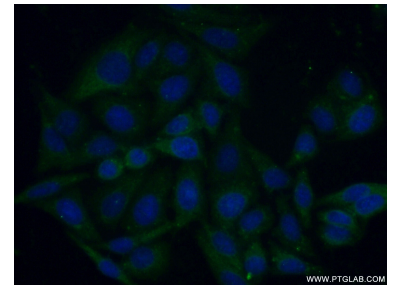
## Données de validation sélectionnées



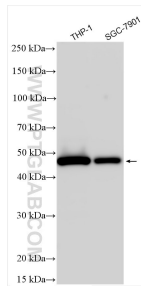
SGC-7901 cells were subjected to SDS PAGE followed by western blot with 11856-1-AP (CASP4 antibody) at dilution of 1:300 incubated at room temperature for 1.5 hours.



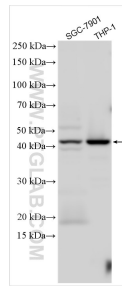
Immunohistochemical analysis of paraffin-embedded human pancreas cancer using 11856-1-AP (CASP4 antibody) at dilution of 1:50 (under 25x lens).



Immunofluorescent analysis of (-20°C Ethanol) fixed HepG2 cells using 11856-1-AP (Caspase 4/p20/p10 antibody) at dilution of 1:50 and Alexa Fluor 488-conjugated AffiniPure Goat Anti-Rabbit IgG(H+L).



Various lysates were subjected to SDS PAGE followed by western blot with 11856-1-AP (Caspase 4/p20/p10 antibody) at dilution of 1:1000 incubated at room temperature for 1.5 hours.



Various lysates were subjected to SDS PAGE followed by western blot with 11856-1-AP (Caspase 4/p20/p10 antibody) at dilution of 1:1000 incubated at room temperature for 1.5 hours.