

À des fins de recherche uniquement

Anticorps Polyclonal de lapin anti-BRD3



Numéro de catalogue: 11859-1-AP

Phare

23 Publications

Informations de base

Numéro de catalogue:

11859-1-AP

Taille:

150ul, Concentration: 650 µg/ml by Nanodrop;

Hôte:

Lapin

Isotype:

IgG

Immunogen Catalog Number:

AG2433

Numéro d'acquisition GenBank:

BC032124

Identification du gène (NCBI):

8019

Nom complet:

bromodomain containing 3

MW calculé

556 aa, 61 kDa

MW observés:

95-105 kDa

Méthode de purification:

Purification par affinité contre l'antigène

Dilutions recommandées:

WB 1:500-1:1000

IP 0.5-4.0 µg for IP and 1:500-1:1000 for WB

IHC 1:50-1:500

IF 1:50-1:500

Applications

Applications testées:

IF, IHC, IP, WB, ELISA

Demandes citées:

IHC, WB

Spécificité de l'espèce:

Humain

Espèces citées:

Humain, souris

Contrôles positifs:

WB : cellules HEK-293T, cellules COLO 320, cellules HeLa, cellules HepG2, cellules Jurkat, cellules K-562, cellules MCF-7

IP : cellules HeLa,

IHC : tissu de cancer de la prostate humain, tissu de gliome humain

IF : cellules HeLa,

Remarque-IHC: il est suggéré de démasquer l'antigène avec un tampon de TE buffer pH 9,0; (*) À défaut, le démasquage de l'antigène peut être effectué avec un tampon citrate pH 6,0.

Informations générales

BRD3 belongs to the BET family that a small group of unique, highly conserved bromodomain-containing genes with four members in mouse and human. There are BRD2, BRD3, BRD4 and BRDT. And BET family proteins all localize in the nucleus, and contain two tandems N-terminal BRDs, an extra-terminal (ET) domain and a more divergent C-terminal recruitment domain (PMID:25849938). BRD2, BRD3, and BRD4 play key roles in transcription of genes required for both inflammation and cancer. Northern hybridization revealed that BRD3 is most abundant in testis, ovary, placenta, uterus, and brain (PMID:15261828; PMID:27451123). The antibody could recognize the common about 100 kDa protein in applications as the papers (PMID:29437854; 22595521).

Publications notables

| Autrice | Pubmed ID | Journal | Application |
|-------------|-----------|----------------------------|-------------|
| Xinmei Liao | 34733788 | Front Oncol | WB |
| Liya Ma | 36224471 | Cancer Chemother Pharmacol | WB |
| Xing Bian | 33134168 | Front Oncol | WB |

Stockage

Stockage:

Stocker à -20°C. Stable pendant un an après l'expédition.

Tampon de stockage:

PBS avec azoture de sodium à 0,02 % et glycérol à 50 % pH 7,3

L'aliquotage n'est pas nécessaire pour le stockage à -20C

*** Les 20ul contiennent 0,1% de BSA.

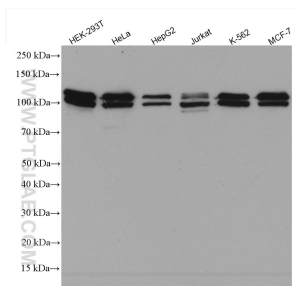
For technical support and original validation data for this product please contact:

T: 1 (888) 4PTGLAB (1-888-478-4522) (toll free in USA), or 1(312) 455-8498 (outside USA)

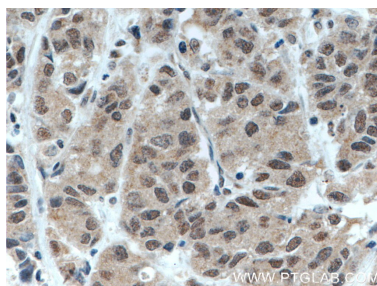
E: proteintech@ptglab.com
W: ptglab.com

This product is exclusively available under Proteintech Group brand and is not available to purchase from any other manufacturer.

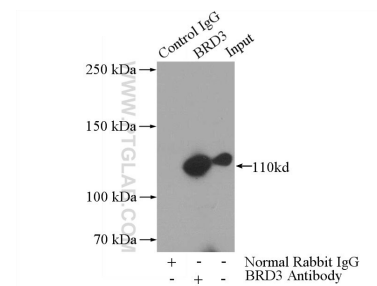
Données de validation sélectionnées



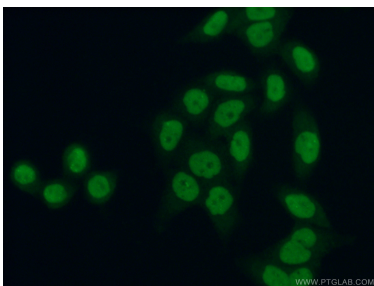
Various lysates were subjected to SDS PAGE followed by western blot with 11859-1-AP (BRD3 antibody) at dilution of 1:600 incubated at room temperature for 1.5 hours.



Immunohistochemical analysis of paraffin-embedded human prostate cancer tissue slide using 11859-1-AP (BRD3 antibody) at dilution of 1:200 (under 40x lens. Heat mediated antigen retrieval with Tris-EDTA buffer (pH 9.0).



IP Result of anti-BRD3 (IP:11859-1-AP, 4ug; Detection:11859-1-AP 1:500) with HeLa cells lysate 4000ug.



Immunofluorescent analysis of (4% PFA) fixed HeLa cells using 11859-1-AP (BRD3 antibody) at dilution of 1:50 and Alexa Fluor 488-conjugated AffiniPure Goat Anti-Rabbit IgG(H+L).