

À des fins de recherche uniquement

Anticorps Polyclonal de lapin anti-VPS37A



Numéro de catalogue: 11870-1-AP

Phare

12 Publications

Informations de base

Numéro de catalogue: 11870-1-AP	Numéro d'acquisition GenBank: BC022363	Méthode de purification: Purification par affinité contre l'antigène
Taille: 150ul, Concentration: 600 µg/ml by Nanodrop and 333 µg/ml by Bradford method using BSA as the standard;	Identification du gène (NCBI): 137492	Dilutions recommandées: WB 1:1000-1:8000 IHC 1:50-1:500 IF 1:50-1:500
Hôte: Lapin	Nom complet: vacuolar protein sorting 37 homolog A (S. cerevisiae)	
Isotype: IgG	MW calculé: 44 kDa	
Immunogen Catalog Number: AG2453	MW observés: 45 kDa	

Applications

Applications testées:

IF, IHC, WB, ELISA

Demandes citées:

IF, IHC, WB

Spécificité de l'espèce:

Humain, souris

Espèces citées:

Humain

Remarque-IHC: il est suggéré de démasquer l'antigène avec un tampon de TE buffer pH 9,0; (*) A défaut, le démasquage de l'antigène peut être effectué avec un tampon citrate pH 6,0.

Contrôles positifs:

WB : cellules HeLa, cellules MCF-7, tissu hépatique de rat, tissu hépatique de souris, tissu hépatique humain

IHC : tissu rénal humain,

IF : tissu hépatique humain,

Informations générales

VPS37A, also named as HCRP1, belongs to the VPS37 family. It is a regulator of vesicular trafficking process. VPS37A is a member of the endosomal sorting complex required for transport (ESCRT) system, in upper motor neuron disease. ESCRT has been shown to play a central role in intracellular trafficking, in the maturation of multivesicular bodies and the sorting of ubiquitinated membrane proteins into internal luminal vesicles.

Publications notables

Autrice	Pubmed ID	Journal	Application
Hao Xu	28963677	Virchows Arch	WB,IHC
Jalal M Kazan	34761192	iScience	WB
Revathi Sekar	36243006	Cell Metab	IF

Stockage

Stockage:

Stocker à -20°C. Stable pendant un an après l'expédition.

Tampon de stockage:

PBS avec azoture de sodium à 0,02 % et glycérol à 50 % pH 7,3

L'aliquotage n'est pas nécessaire pour le stockage à -20C

*** Les 20ul contiennent 0,1% de BSA.

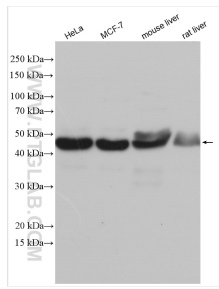
For technical support and original validation data for this product please contact:

T: 1 (888) 4PTGLAB (1-888-478-4522) (toll free in USA), or 1(312) 455-8498 (outside USA)

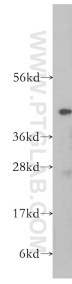
E: proteintech@ptglab.com
W: ptglab.com

This product is exclusively available under Proteintech Group brand and is not available to purchase from any other manufacturer.

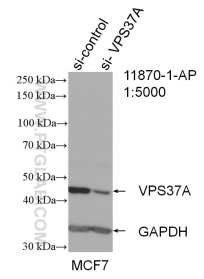
Données de validation sélectionnées



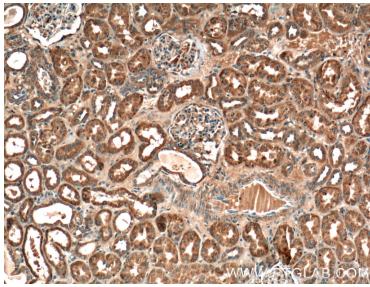
Various lysates were subjected to SDS PAGE followed by western blot with 11870-1-AP (VPS37A antibody) at dilution of 1:4000 incubated at room temperature for 1.5 hours.



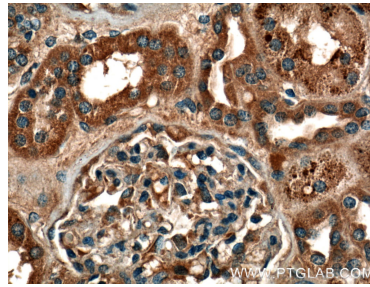
human liver tissue were subjected to SDS PAGE followed by western blot with 11870-1-AP (VPS37A antibody) at dilution of 1:400 incubated at room temperature for 1.5 hours.



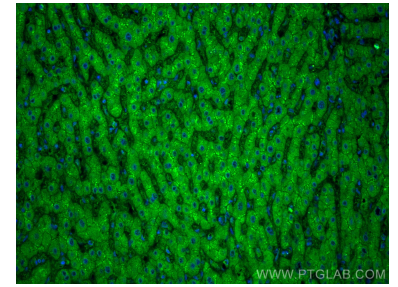
WB result of VPS37A antibody (11870-1-AP; 1:5000; incubated at room temperature for 1.5 hours) with sh-Control and sh-VPS37A transfected MCF-7 cells.



Immunohistochemical analysis of paraffin-embedded human kidney tissue slide using 11870-1-AP (VPS37A antibody) at dilution of 1:200 (under 10x lens).



Immunohistochemical analysis of paraffin-embedded human kidney tissue slide using 11870-1-AP (VPS37A antibody) at dilution of 1:200 (under 40x lens).



Immunofluorescent analysis of (4% PFA) fixed human liver tissue using VPS37A antibody (11870-1-AP) at dilution of 1:200 and CoraLite®488-Conjugated AffiniPure Goat Anti-Rabbit IgG(H+L).