

À des fins de recherche uniquement

# Anticorps Polyclonal de lapin anti-SH2D1B



Numéro de catalogue: 11871-1-AP

7 Publications

## Informations de base

Numéro de catalogue:

11871-1-AP

Numéro d'acquisition GenBank:

BC022407

Méthode de purification:

Purification par affinité contre l'antigène

Taille:

150ul, Concentration: 400 µg/ml by Nanodrop and 367 µg/ml by Bradford method using BSA as the standard;

Identification du gène (NCBI):

117157

Dilutions recommandées:

IHC 1:50-1:500

IF 1:50-1:500

Hôte:

Lapin

MW calculé

132 aa, 15 kDa

Isotype:

IgG

MW observés:

15 kDa

Immunogen Catalog Number:

AG2454

## Applications

Applications testées:

FC, IF, IHC, ELISA

Contrôles positifs:

IHC : tissu rénal humain,

IF : cellules HepG2,

Demandes citées:

CoIP, FC

Spécificité de l'espèce:

Humain, rat, souris

Espèces citées:

Humain

**Remarque-IHC: il est suggéré de démasquer l'antigène avec un tampon de TE buffer pH 9,0; (\*) A défaut, le démasquage de l'antigène peut être effectué avec un tampon citrate pH 6,0.**

## Informations générales

SH2D1B, also named as EAT2, an adaptor expressed in innate immune cells, including natural killer (NK) cells. It plays a role in controlling signal transduction through at least four receptors, CD84, SLAMF1, LY9 and CD244, expressed on the surface of professional antigen-presenting cells. EAT-2 overexpression would enhance the innate immune responses and also result in more potent Carcinoembryonic antigen-specific adaptive immune responses.

## Publications notables

Autrice	Pubmed ID	Journal	Application
Lihi Radomir	28904129	J Immunol	FC, CoIP
Ivayla E Gyurova	31824507	Front Immunol	FC
Heinrich Schlums	25786176	Immunity	FC

## Stockage

Stockage:

Stocker à -20°C. Stable pendant un an après l'expédition.

Tampon de stockage:

PBS avec azoture de sodium à 0,02 % et glycérol à 50 % pH 7,3

L'aliquotage n'est pas nécessaire pour le stockage à -20C

\*\*\* Les 20ul contiennent 0,1% de BSA.

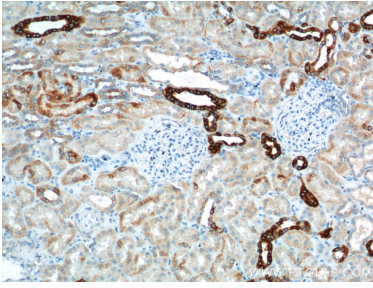
For technical support and original validation data for this product please contact:

T: 1 (888) 4PTGLAB (1-888-478-4522) (toll free in USA), or 1(312) 455-8498 (outside USA)

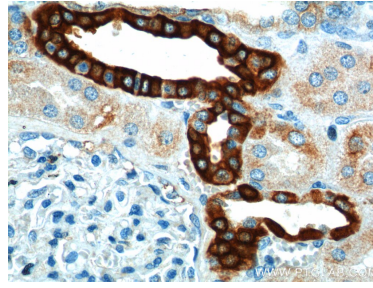
E: proteintech@ptglab.com  
W: ptglab.com

This product is exclusively available under Proteintech Group brand and is not available to purchase from any other manufacturer.

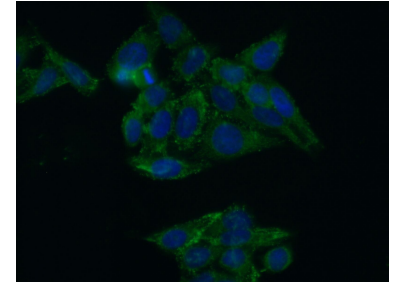
## Données de validation sélectionnées



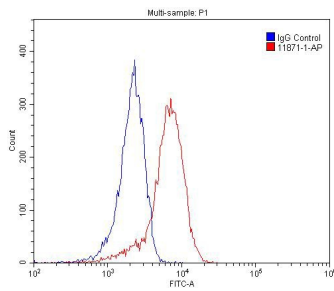
Immunohistochemical analysis of paraffin-embedded human kidney tissue slide using 11871-1-AP (SH2D1B Antibody) at dilution of 1:200 (under 10x lens).



Immunohistochemical analysis of paraffin-embedded human kidney tissue slide using 11871-1-AP (SH2D1B Antibody) at dilution of 1:200 (under 40x lens).



Immunofluorescent analysis of (-20°C Ethanol) fixed HepG2 cells using 11871-1-AP (SH2D1B antibody) at dilution of 1:50 and Alexa Fluor 488-conjugated AffiniPure Goat Anti-Rabbit IgG(H+L).



1X10<sup>6</sup> Jurkat cells were stained with 0.2 $\mu$ g SH2D1B antibody (11871-1-AP, red) and control antibody (blue). Alexa Fluor 488-conjugated AffiniPure Goat Anti-Rabbit IgG(H+L) with dilution 1:1500. Cells were fixed with 4% PFA and permeabilized with 0.1% Triton X-100.