

À des fins de recherche uniquement

Anticorps Polyclonal de lapin anti-KLF4



Numéro de catalogue: 11880-1-AP

Phare

106 Publications

Informations de base

Numéro de catalogue:
11880-1-AP

Taille:
150ul, Concentration: 500 µg/ml by
Nanodrop;

Hôte:
Lapin

Isotype:
IgG

Immunogen Catalog Number:
AG2480

Numéro d'acquisition GenBank:
BC030811

Identification du gène (NCBI):
9314

Nom complet:
Krüppel-like factor 4 (gut)

MW calculé:
504 aa, 54 kDa

MW observés:
50-60 kDa

Méthode de purification:
Purification par affinité contre
l'antigène

Dilutions recommandées:
WB 1:1000-1:8000
IP 0.5-4.0 µg for IP and 1:500-1:1000
for WB
IHC 1:50-1:500
IF 1:20-1:200

Applications

Applications testées:
FC, IF, IHC, IP, WB, ELISA

Demandes citées:
chIP, FC, IF, IHC, IP, WB

Spécificité de l'espèce:
Humain, rat, souris

Espèces citées:
Humain, rat, souris

Remarque-IHC: il est suggéré de démasquer l'antigène avec un tampon de TE buffer pH 9.0; (*) À défaut, le démasquage de l'antigène peut être effectué avec un tampon citrate pH 6.0.

Contrôles positifs:

WB : cellules A431, cellules A549, cellules C2C12, cellules HEK-293, cellules HeLa, cellules HT-1080, cellules HT-29, cellules NCCIT

IP : cellules HeLa,

IHC : tissu embryonnaire de souris, tissu amygdalien humain, tissu de côlon humain, tissu splénique humain

IF : cellules souches embryonnaires humaines,

Informations générales

The mammalian Krüppel-like transcription factor 4 (Klf4) is an evolutionarily conserved zinc finger-containing transcription factor with diverse regulatory functions in cell growth, proliferation, differentiation and embryogenesis. It also plays a significant role in the process of tumorigenesis. Klf4 is one of the key transcription factors that have been used to reprogram mouse and human fibroblasts to a pluripotent state also called induced pluripotent stem (iPS) cells. Affinity purified rabbit anti-Klf4 is for the detection of Klf4 transgene expression in the process of reprogramming. There are two isoforms of KLF4 (PMID: 15561714), with MW range from 50 to 60 kDa, and major band is 55 kDa. KLF4 protein can be ubiquitin modified.

Publications notables

Autrice	Pubmed ID	Journal	Application
Martin Degen	33117810	Front Cell Dev Biol	WB
Shuang Li	30269953	Stem Cell Reports	WB
Xinjian Zhang	28888043	J Cell Biochem	WB,IF

Stockage

Stockage:
Stocker à -20°C. Stable pendant un an après l'expédition.

Tampon de stockage:
PBS avec azoture de sodium à 0,02 % et glycérol à 50 % pH 7,3
L'aliquotage n'est pas nécessaire pour le stockage à -20C

*** Les 20ul contiennent 0,1% de BSA.

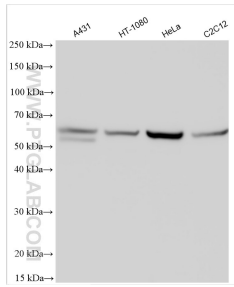
For technical support and original validation data for this product please contact:

T: 1 (888) 4PTGLAB (1-888-478-4522) (toll free in USA), or 1(312) 455-8498 (outside USA)

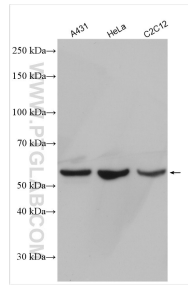
E: proteintech@ptglab.com
W: ptglab.com

This product is exclusively available under Proteintech Group brand and is not available to purchase from any other manufacturer.

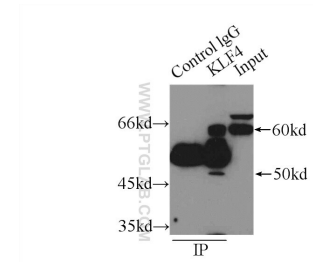
Données de validation sélectionnées



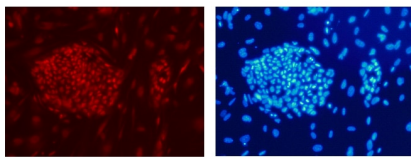
Various lysates were subjected to SDS PAGE followed by western blot with 11880-1-AP (KLF4 antibody) at dilution of 1:4000 incubated at room temperature for 1.5 hours.



Various lysates were subjected to SDS PAGE followed by western blot with 11880-1-AP (KLF4 antibody) at dilution of 1:4000 incubated at room temperature for 1.5 hours.

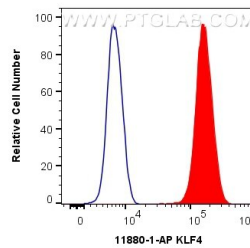


IP Result of anti-KLF4 (IP:11880-1-AP, 3ug; Detection:11880-1-AP 1:500) with HeLa cells lysate 4650ug.

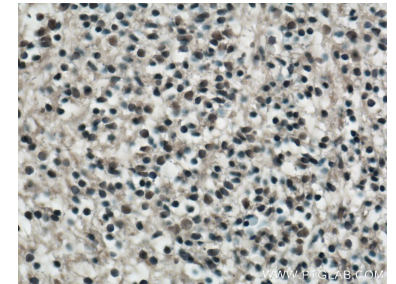


PE DAPI
Confocal immunofluorescent analysis of human embryonic stem cells with 11880-1-AP at dilution of 1:50. The PE shows staining with 11880-1-AP/PE. The DAPI shows nuclear staining by DAPI.

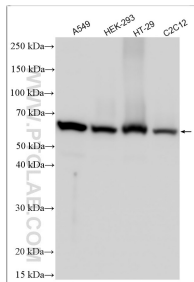
Confocal immunofluorescent analysis of human embryonic stem cells with 11880-1-AP at dilution of 1:50. The PE shows staining with 11880-1-AP/PE. The DAPI shows nuclear staining by DAPI.



1X10⁶ HeLa cells were intracellularly stained with 0.4 ug Anti-Human KLF4 (11880-1-AP) and CoraLite®488-Conjugated AffiniPure Goat Anti-Rabbit IgG(H+L) at dilution 1:1000 (red), or 0.4 ug Isotype Control. Cells were fixed and permeabilized with Transcription Factor Staining Buffer Kit (PF00011).



Immunohistochemical analysis of paraffin-embedded mouse embryo tissue slide using 11880-1-AP (KLF4 Antibody) at dilution of 1:200 (under 40x lens). Heat mediated antigen retrieval with Tris-EDTA buffer (pH 9.0).



Various lysates were subjected to SDS PAGE followed by western blot with 11880-1-AP (KLF4 antibody) at dilution of 1:8000 incubated at room temperature for 1.5 hours.