

À des fins de recherche uniquement

Anticorps Polyclonal de lapin anti-KLF10



Numéro de catalogue: 11881-1-AP

5 Publications

Informations de base

Numéro de catalogue:
11881-1-AP

Taille:
150ul, Concentration: 200 µg/ml by Nanodrop and 133 µg/ml by Bradford method using BSA as the standard;

Hôte:
Lapin

Isotype:
IgG

Immunogen Catalog Number:
AG2482

Numéro d'acquisition GenBank:
BC011538

Identification du gène (NCBI):
7071

Nom complet:
Kruppel-like factor 10

MW calculé
469 aa, 51 kDa

MW observés:
51 kDa

Méthode de purification:
Purification par affinité contre l'antigène

Dilutions recommandées:
WB 1:200-1:1000
IP 0.5-4.0 ug for IP and 1:200-1:1000 for WB
IF 1:20-1:200

Applications

Applications testées:
IF, IP, WB, ELISA

Demandes citées:
Chip, IF, IHC, WB

Spécificité de l'espèce:
Humain

Espèces citées:
canin, Humain, souris

Contrôles positifs:

WB : cellules HeLa, cellules Jurkat

IP : cellules Jurkat,

IF : cellules HeLa,

Informations générales

KLF10 (Kruessel-like factor 10), also known as TIEG1, is a transcription factor that plays a role in the regulation of cell growth. It binds to the consensus sequence 5'-GGTGTG-3'. KLF10 plays a role in the response to TGFbeta (through the TGFbeta/Smad signalling pathway) and estrogen. In both cases, KLF10 induces or repressed gene transcription to enhance the TGFbeta/Smad signalling pathway, as well as other pathways, to regulate cell proliferation, differentiation and apoptosis. KLF10 has been shown to have a role in skeletal disease (osteopenia/osteoporosis), hypertrophic cardiomyopathy, and breast and prostate cancer. This antibody is a rabbit polyclonal antibody raised against a full-length human KLF10 protein, and specifically recognizes the 52kd KLF10 protein.

Publications notables

Autrice	Pubmed ID	Journal	Application
Yongyun Li	34536440	J Mol Cell Cardiol	IF
Xiaoyin Ma	26984531	Sci Rep	Chip
Langlang Zheng	32156482	Acta Histochem	WB,IHC

Stockage

Stockage:

Stocker à -20°C. Stable pendant un an après l'expédition.

Tampon de stockage:

PBS avec azoture de sodium à 0,02 % et glycérol à 50 % pH 7,3

L'aliquotage n'est pas nécessaire pour le stockage à -20C

*** Les 20ul contiennent 0,1% de BSA.

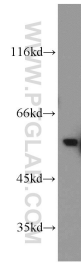
For technical support and original validation data for this product please contact:

T: 1 (888) 4PTGLAB (1-888-478-4522) (toll free in USA), or 1(312) 455-8498 (outside USA)

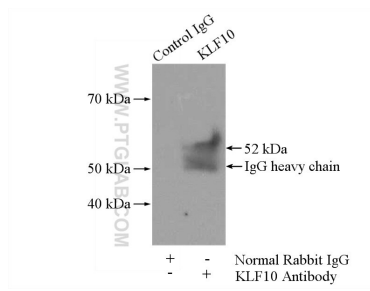
E: proteintech@ptglab.com
W: ptglab.com

This product is exclusively available under Proteintech Group brand and is not available to purchase from any other manufacturer.

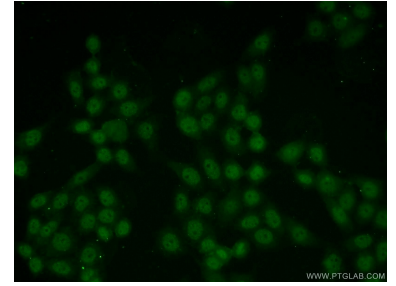
Données de validation sélectionnées



HeLa cells were subjected to SDS PAGE followed by western blot with 11881-1-AP (KLF10 antibody) at dilution of 1:100 incubated at room temperature for 1.5 hours.



IP Result of anti-KLF10 (IP:11881-1-AP, 4ug; Detection:11881-1-AP 1:300) with Jurkat cells lysate 2800ug.



Immunofluorescent analysis of HeLa cells using 11881-1-AP (KLF10 antibody) at dilution of 1:50 and Alexa Fluor 488-conjugated AffiniPure Goat Anti-Rabbit IgG(H+L).