

À des fins de recherche uniquement

# Anticorps Polyclonal de lapin anti-PSMA3



Numéro de catalogue: 11887-1-AP

5 Publications

## Informations de base

Numéro de catalogue: 11887-1-AP	Numéro d'acquisition GenBank: BC029402	Méthode de purification: Purification par affinité contre l'antigène
Taille: 150ul, Concentration: 700 µg/ml by Nanodrop and 333 µg/ml by Bradford method using BSA as the standard;	Identification du gène (NCBI): 5684	Dilutions recommandées: WB 1:1000-1:8000 IHC 1:50-1:500 IF 1:200-1:800
Hôte: Lapin	Nom complet: proteasome (prosome, macropain) subunit, alpha type, 3	
Isotype: IgG	MW calculé: 255 aa, 28 kDa	
Immunogen Catalog Number: AG2495	MW observés: 28 kDa	

## Applications

### Applications testées:

IF, IHC, WB, ELISA

### Demandes citées:

ELISA, IF, WB

### Spécificité de l'espèce:

Humain, rat, souris

### Espèces citées:

Humain, souris

**Remarque-IHC: il est suggéré de démasquer l'antigène avec un tampon de TE buffer pH 9,0; (\*) A défaut, 'le démasquage de l'antigène peut être effectué avec un tampon citrate pH 6,0.**

### Contrôles positifs:

WB : cellules A549, cellules COS-7, cellules HeLa, cellules NIH/3T3, cellules PC-12, cellules RAW 264.7, tissu cérébral de rat, tissu hépatique de souris, tissu pulmonaire humain, tissu splénique de souris

IHC : tissu de lymphome humain, tissu de cancer du foie humain

IF : cellules HeLa,

## Informations générales

PSMA3 (Proteasome subunit alpha type-3) is also named as HC8, PSC8 and belongs to the peptidase T1A family. The proteasome is a multicatalytic protease complex that catalyzes an energy-dependent, extralysosomal proteolytic pathway responsible for selective elimination of proteins with aberrant structures and naturally occurring short-lived proteins related to metabolic regulation and cell cycle progression. It has 2 isoforms produced by alternative splicing.

## Publications notables

Autrice	Pubmed ID	Journal	Application
Jesper Just	26472192	Free Radic Biol Med	ELISA
Diego Sbardella	29594388	Cell Mol Life Sci	
Yang Wang	35858239	Clin Transl Med	IF

## Stockage

### Stockage:

Stocker à -20°C. Stable pendant un an après l'expédition.

### Tampon de stockage:

PBS avec azoture de sodium à 0,02 % et glycérol à 50 % pH 7,3

L'aliquotage n'est pas nécessaire pour le stockage à -20C

\*\*\* Les 20ul contiennent 0,1% de BSA.

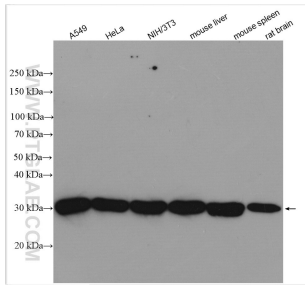
For technical support and original validation data for this product please contact:

T: 1 (888) 4PTGLAB (1-888-478-4522) (toll free in USA), or 1(312) 455-8498 (outside USA)

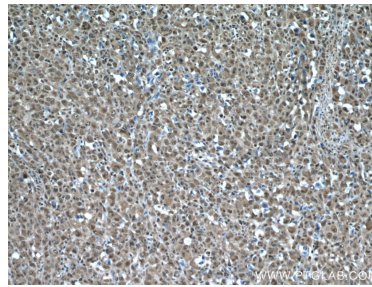
E: proteintech@ptglab.com  
W: ptglab.com

This product is exclusively available under Proteintech Group brand and is not available to purchase from any other manufacturer.

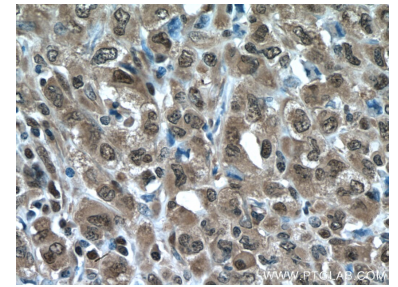
## Données de validation sélectionnées



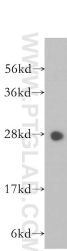
A549 cells were subjected to SDS PAGE followed by western blot with 11887-1-AP (PSMA3 antibody) at dilution of 1:4000 incubated at room temperature for 1.5 hours.



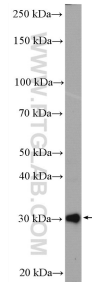
Immunohistochemical analysis of paraffin-embedded human lymphoma tissue slide using 11887-1-AP (PSMA3 antibody) at dilution of 1:200 (under 10x lens. Heat mediated antigen retrieval with Tris-EDTA buffer (pH 9.0).



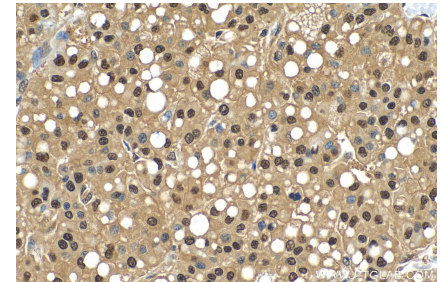
Immunohistochemical analysis of paraffin-embedded human lymphoma tissue slide using 11887-1-AP (PSMA3 antibody) at dilution of 1:200 (under 40x lens. Heat mediated antigen retrieval with Tris-EDTA buffer (pH 9.0).



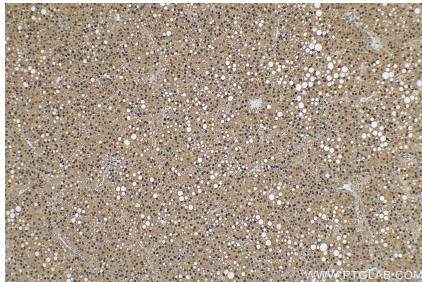
human lung tissue were subjected to SDS PAGE followed by western blot with 11887-1-AP (PSMA3 antibody) at dilution of 1:400 incubated at room temperature for 1.5 hours.



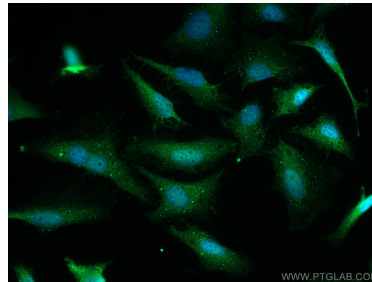
PC-12 cells were subjected to SDS PAGE followed by western blot with 11887-1-AP (PSMA3 antibody) at dilution of 1:1000 incubated at room temperature for 1.5 hours.



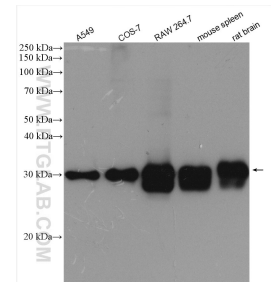
Immunohistochemical analysis of paraffin-embedded human liver cancer tissue slide using 11887-1-AP (PSMA3 antibody) at dilution of 1:500 (under 40x lens). Heat mediated antigen retrieval with Tris-EDTA buffer (pH 9.0).



Immunohistochemical analysis of paraffin-embedded human liver cancer tissue slide using 11887-1-AP (PSMA3 antibody) at dilution of 1:500 (under 10x lens). Heat mediated antigen retrieval with Tris-EDTA buffer (pH 9.0).



Immunofluorescent analysis of (4% PFA) fixed HeLa cells using PSMA3 antibody (11887-1-AP) at dilution of 1:400 and CoraLite® 488-Conjugated AffiniPure Goat Anti-Rabbit IgG(H+L).



Various lysates were subjected to SDS PAGE followed by western blot with 11887-1-AP (PSMA3 antibody) at dilution of 1:8000 incubated at room temperature for 1.5 hours.